

# Economic Reporter

Promoting Economic Development in Southeast Louisiana

First Quarter 2006

Vol. 2 · No. 3

**NATIONAL**

- U.S. Economy

**STATE**

- LA Employment
- LA Stock

**REGIONAL**

- Employment
- Sales Tax Collection
- Building Permits
- Economy

**LOCAL**

- St. Tammany
- Tangipahoa
- Livingston
- Washington
- St. Helena

**CONTACT US**

Southeastern Louisiana University  
 Business Research Center  
 1514 Martens Drive  
 Hammond, LA 70401

Phone: (985) 549-3199  
 Fax: (985) 549-2127  
 wjoubert@selu.edu

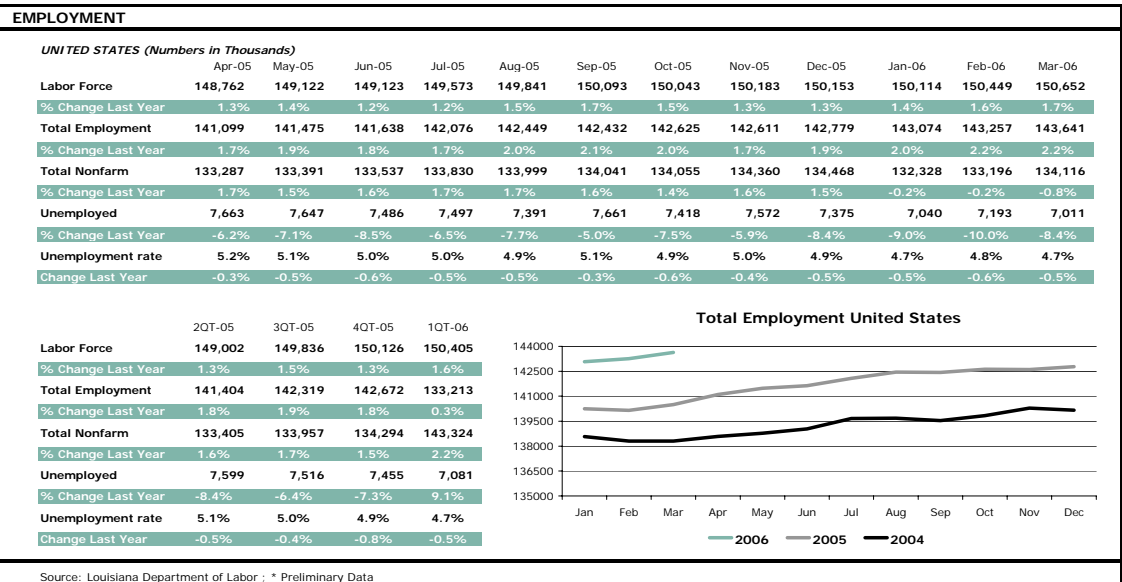
**NATIONAL**

## U.S. Economy

Dr. A. M. M. Jamal  
 Professor of Management

The U. S. gross domestic product grew 5.6 percent in real terms during the first quarter of 2006 and advanced 3.2 percent during the past twelve months. Total employment for the fourth quarter grew 1.9 percent compared with the corresponding period of the previous

year. A survey of forecasters by the *Economist*, shows that the U.S. economy would grow 3.4 percent and 2.5 percent in 2006 and 2007 respectively. In addition, forecasts published by the Wachovia Bank indicate similar growth rates at 3.4 percent and 2.7 percent.



## STATE

### Gross State Product

**John Giamalva**

Instructor, Department of General Business

After expanding 4.5 percent in real terms in 2004, Louisiana's real gross product declined 1.6% in 2005, largely reflecting the impact of the 2005 hurricanes. Earlier figures had indicated a 2.2 percent growth in

2004, However revised data show that the state's real gross product expanded faster than the national average of 4.2 percent in 2004, led by increases in non-durable goods manufacturing, trade, and durable goods manufacturing. Preliminary figures for 2005 published by the U.S. Bureau of Economic Analysis indicate that Louisiana was the only state to experience a decline in real gross state product in 2005.

### Louisiana Employment Situation

**Dr. A. M. M. Jamal**

Professor of Management

The total state employment for the first quarter of 2006 dropped 8.8 percent compared with the corresponding period of the previous year. The unemployment rate for the most recent three months was 4.7 percent compared with 5.7 percent for the

same period last year. The decline in the unemployment rate was due to a decrease in the number of people actively seeking work.

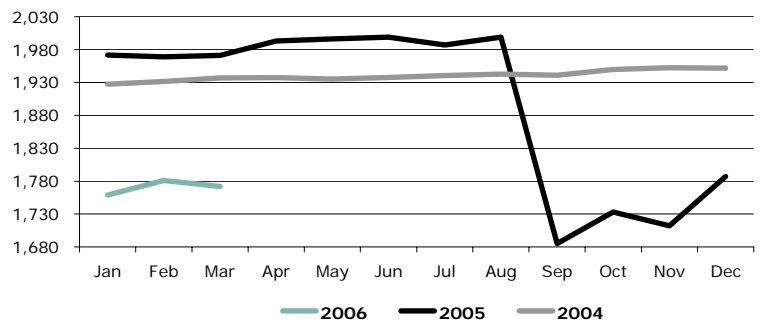
#### EMPLOYMENT

##### LOUISIANA (Numbers in Thousands)

	Apr-05	May-05	Jun-05	Jul-05	Aug-05	Sep-06	Oct-05	Nov-05	Dec-06	Jan-06	Feb-06	Mar-06
<b>Labor Force</b>	2,101	2,111	2,155	2,144	2,134	1,980	1,953	1,954	1,897	1,862	1,859	1,854
% Change Last Year	2.3%	2.7%	4.8%	4.2%	3.9%	4.2%	-5.6%	-5.7%	-8.4%	-11.0%	-11.2%	-10.9%
<b>Total Employment</b>	1,993	1,996	1,999	1,987	1,999	1,685	1,733	1,712	1,787	1,759	1,781	1,772
% Change Last Year	2.9%	3.1%	3.1%	2.4%	2.9%	-12.0%	-11.1%	-12.3%	-8.4%	-10.8%	-9.5%	-10.1%
<b>Total Nonfarm</b>	1,933	1,933	1,934	1,917	1,918	1,753	1,699	1,715	1,722	1,750	1,760	1,765
% Change Last Year	0.6%	0.8%	0.8%	-0.2%	-0.2%	-9.7%	-11.5%	-10.7%	-10.2%	-9.2%	-8.5%	-8.6%
<b>Unemployed</b>	1,080	1,151	1,384	1,318	1,284	2,271	2,110	2,426	1,099	1,027	776	819
% Change Last Year	-7.7%	-3.6%	16.1%	12.3%	14.5%	94.4%	84.9%	103.4%	-6.8%	-14.0%	-38.1%	-25.6%
<b>Unemployment rate</b>	5.1%	5.4%	6.4%	6.1%	6.0%	11.5%	11.3%	12.4%	5.8%	5.5%	4.2%	4.4%
Change Last Year	-0.6%	-0.4%	0.6%	-0.1%	0.3%	5.5%	5.5%	6.6%	0.1%	-0.2%	1.8%	-0.9%

	2Q-05	3Q-05	4Q-05	1Q-06
<b>Labor Force</b>	2,108	2,086	1,934	1,858
% Change Last Year	260.0%	1.4%	-6.5%	-11.0%
<b>Total Employment</b>	1,934	1,912	1,712	1,759
% Change Last Year	0.7%	-1.5%	-10.8%	-8.8%
<b>Total Nonfarm</b>	1,996	1,840	1,744	1,771
% Change Last Year	3.1%	-4.1%	-10.6%	-10.1%
<b>Unemployed</b>	113	162	191	87
% Change Last Year	-8.1%	40.7%	60.7%	-26.1%
<b>Unemployment rate</b>	5.4%	7.8%	9.8%	4.7%
Change Last Year	-0.5%	2.2%	4.1%	-1.0%

Total Employment Louisiana (Thousands)



Source: Louisiana Department of Labor

## REGIONAL

### North Shore Employment Situation

Dr. A. M. M. Jamal  
 Professor of Management

Total employment in the North Shore Region (the four Florida parishes of Tangipahoa, Washington, Livingston and St. Helena) during the first quarter of 2006 was 4.9 percent lower compared with the corresponding period in 2005. Among the parishes for which data were available Washington, St. Helena, and Livingston parishes

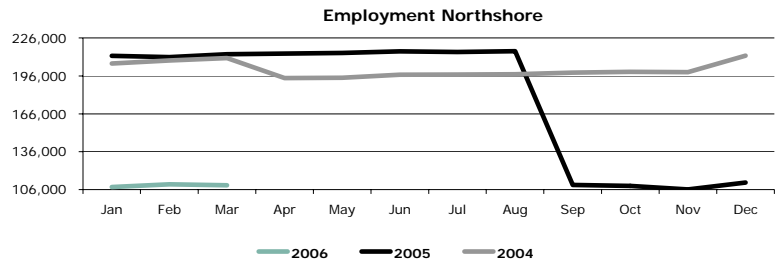
experienced declines of 17.7 percent, 4.9 percent, and 1.5 percent respectively. Tangipahoa Parish, on the other hand, saw a slight gain of 0.5 percent. St. Tammany, a north shore parish, was again not included in the analysis because the employment data were unavailable.

#### EMPLOYMENT

##### NORTHSHORE

	Apr-05	May-05	Jun-05	Jul-05	Aug-05	Sep-05	Oct-05	Nov-05	Dec-05	Jan-06	Feb-06	Mar-06
<b>Labor Force</b>	222,460	224,454	228,736	227,706	227,968	128,363	124,967	123,439	118,638	114,488	115,153	114,610
% Change Last Year	6.7%	5.9%	4.7%	4.3%	7.6%	11.2%	6.7%	5.3%	-2.4%	-7.5%	-4.9%	-5.5%
<b>Total Employment</b>	213,562	214,311	215,436	214,959	215,508	109,709	108,913	106,195	111,687	108,218	110,335	109,584
% Change Last Year	8.8%	8.2%	6.8%	6.2%	7.8%	1.4%	-0.7%	-2.9%	-2.3%	-6.6%	-3.2%	-4.9%
<b>Unemployed</b>	8,898	10,143	13,300	12,747	12,460	18,654	16,054	17,244	6,951	6,270	4,818	5,026
% Change Last Year	-23.3%	-22.8%	-16.1%	-15.9%	5.2%	159.6%	115.8%	121.4%	-4.5%	-21.1%	-32.2%	-16.8%
<b>Unemployment rate</b>	4.0%	4.5%	5.8%	5.6%	5.5%	14.5%	12.8%	14.0%	5.9%	5.5%	4.2%	4.4%
Change Last Year	-1.9%	-1.9%	-1.8%	-1.6%	0.1%	8.3%	6.5%	7.3%	-0.1%	-0.9%	-1.7%	-0.6%

	2Q-05	3Q-05	4Q-05	1Q-06
<b>Labor Force</b>	225,217	194,679	122,348	114,750
% Change Last Year	8.5%	-7.0%	-43.0%	-6.0%
<b>Total Employment</b>	214,436	180,059	108,932	109,379
% Change Last Year	9.8%	-8.9%	-46.5%	-4.9%
<b>Unemployed</b>	10,780	14,620	13,416	5,371
% Change Last Year	-19.0%	26.3%	20.8%	-23.6%
<b>Unemployment rate</b>	4.8%	8.5%	10.9%	4.7%
Change Last Year	-1.0%	3.0%	5.7%	-1.1%



Source: Louisiana Department of Labor ; \* Data unavailable for St. Tammany parish

## Sales Tax Collections in North Shore Region

SALES TAX												
NORTSHORE												
	Apr-05	May-05	Jun-05	Jul-05	Aug-05	Sep-05	Oct-05	Nov-05	Dec-05	Jan-06*	Feb-06*	Mar-06*
Sales Tax Collected (Mil.)	\$ 22.38	\$ 20.93	\$ 22.30	\$ 20.98	\$ 15.48	\$ 19.92	\$ 29.19	\$ 28.66	\$ 28.49	\$ 28.40	\$ 26.07	\$ 28.83
% Change Last Year	11.9%	8.6%	9.0%	4.1%	-22.4%	0.4%	50.0%	49.1%	23.6%	37.3%	38.3%	37.4%

\* Data not available for Washington Parish

Source: St. Tammany Parish Sheriff's Office (Sales and Use Tax Division), Tangipahoa Parish Council - School Board, St. Helena Parish Sheriff's Office, Livingston Parish Sales Tax Department, Washington Parish Sheriff's Office - Sales and Use Tax Department

## Building Permits in North Shore Region

RESIDENTIAL BUILDING PERMITS												
NORTSHORE												
	Apr-05	May-05	Jun-05	Jul-05	Aug-05	Sep-05	Oct-05	Nov-05	Dec-05	Jan-06*	Feb-06*	Mar-06*
<b>Total Units</b>	<b>398</b>	<b>426</b>	<b>413</b>	<b>391</b>	<b>558</b>	<b>303</b>	<b>598</b>	<b>429</b>	<b>511</b>	<b>751</b>	<b>425</b>	<b>550</b>
% Change Last Year	-25.5%	-4.5%	-12.3%	-21.8%	-0.4%	-10.6%	8.7%	28.4%	2.4%	99.2%	-21.4%	2.8%
<b>Value (\$000s)</b>	<b>54,823</b>	<b>61,102</b>	<b>58,116</b>	<b>53,912</b>	<b>78,039</b>	<b>27,809</b>	<b>69,502</b>	<b>60,690</b>	<b>74,301</b>	<b>103,097</b>	<b>57,522</b>	<b>66,117</b>
% Change Last Year	-20.7%	7.9%	-3.2%	-19.3%	13.9%	-43.5%	9.4%	24.8%	8.5%	104.9%	-22.8%	-10.5%
<b>Unincopr. Units</b>	<b>353</b>	<b>388</b>	<b>380</b>	<b>368</b>	<b>535</b>	<b>262</b>	<b>549</b>	<b>355</b>	<b>461</b>	<b>690</b>	<b>374</b>	<b>507</b>
% Change Last Year	-27.1%	-3.0%	-8.4%	-17.9%	8.3%	-11.8%	3.8%	13.1%	1.5%	107.8%	-25.6%	3.7%
<b>Value (\$000s)</b>	<b>48,918</b>	<b>55,178</b>	<b>53,786</b>	<b>49,038</b>	<b>72,360</b>	<b>22,354</b>	<b>62,904</b>	<b>50,733</b>	<b>66,626</b>	<b>93,071</b>	<b>49,269</b>	<b>61,057</b>
% Change Last Year	-22.9%	8.5%	0.9%	-15.2%	17.6%	-50.0%	1.4%	8.5%	2.1%	111.8%	-30.7%	-11.6%
<b>Corp. Units</b>	<b>45</b>	<b>38</b>	<b>33</b>	<b>23</b>	<b>23</b>	<b>41</b>	<b>49</b>	<b>74</b>	<b>50</b>	<b>61</b>	<b>51</b>	<b>43</b>
% Change Last Year	-10.0%	-17.4%	-41.1%	-55.8%	-62.9%	-2.4%	133.3%	270.0%	11.1%	35.6%	34.2%	-6.5%
<b>Value (\$000s)</b>	<b>5,905</b>	<b>5,924</b>	<b>4,330</b>	<b>4,874</b>	<b>5,680</b>	<b>5,455</b>	<b>6,598</b>	<b>9,958</b>	<b>7,675</b>	<b>10,026</b>	<b>8,254</b>	<b>5,061</b>
% Change Last Year	4.8%	2.6%	-24.9%	-45.8%	-18.6%	19.8%	349.0%	436.0%	135.8%	56.9%	143.0%	4.9%

\*-Data unavailable for St. Helena Parish

Source: St Tammany Parish - Economic Development Information Clearing House, Tangipahoa - Building Permit Office, Washington Parish - Building Permit Office, St. Helena Parish - Building Permit Office.

## LOCAL

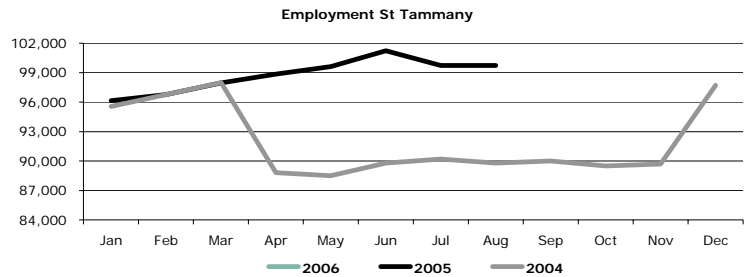
### St. Tammany Parish

#### EMPLOYMENT

##### ST. TAMMANY

	Apr-05	May-05	Jun-05	Jul-05	Aug-05	Sep-05	Oct-05	Nov-05	Dec-05	Jan-06	Feb-06	Mar-06
<b>Labor Force</b>	102,019	103,417	105,624	105,798	104,424	na	na	na	na	na	na	na
% Change Last Year	11.0%	12.5%	12.4%	12.2%	12.4%	na	na	na	na	na	na	na
<b>Total Employment</b>	98,857	99,603	101,043	101,231	99,747	na	na	na	na	na	na	na
% Change Last Year	11.3%	12.5%	12.5%	12.2%	11.1%	na	na	na	na	na	na	na
<b>Unemployed</b>	3,162	3,814	4,581	4,567	4,677	na	na	na	na	na	na	na
% Change Last Year	2.0%	12.2%	9.1%	11.4%	50.9%	na	na	na	na	na	na	na
<b>Unemployment rate</b>	3.1%	3.7%	4.3%	4.3%	4.5%	na	na	na	na	na	na	na
Change Last Year	-0.3%	0.0%	-0.2%	-0.1%	1.2%	na	na	na	na	na	na	na

	2QT-05	3QT-05	4QT-05	1QT-06
<b>Labor Force</b>	103,687	70,074	na	na
% Change Last Year	12.0%	-25.0%	na	na
<b>Total Employment</b>	99,834	66,993	na	na
% Change Last Year	12.1%	-25.5%	na	na
<b>Unemployed</b>	3,852	3,081	na	na
% Change Last Year	-4.3%	-11.1%	na	na
<b>Unemployment rate</b>	3.7%	2.9%	na	na
Change Last Year	-0.2%	-0.8%	na	na



Source: Louisiana Department of Labor ; \* Data based on new benchmark - No data available for the previous years.

#### SALES TAX

##### ST. TAMMANY

	Apr-05	May-05	Jun-05	Jul-05	Aug-05	Sep-05	Oct-05	Nov-05	Dec-05	Jan-06	Feb-06	Mar-06
<b>Total Sales (Mil.)</b>	na	na	na	na	na	na	na	na	na	na	na	na
% Change Last Year	na	na	na	na	na	na	na	na	na	na	na	na
<b>Sales Tax Collected (Mil.)</b>	\$ 14.15	\$ 13.35	\$ 14.56	\$ 15.87	\$ 8.25	\$ 13.61	\$ 19.86	\$ 18.91	\$ 19.14	\$ 19.14	\$ 18.88	\$ 21.24
% Change Last Year	18.0%	10.2%	7.4%	3.3%	-33.3%	8.3%	64.0%	50.9%	18.6%	58.7%	58.5%	49.2%

Source: St. Tammany Parish Sheriff's Office (Sales and Use Tax Division)

#### Residential Building Permits

##### ST. TAMMANY

	Apr-05	May-05	Jun-05	Jul-05	Aug-05	Sep-05	Oct-05	Nov-05	Dec-05	Jan-06	Feb-06	Mar-06
<b>Total Units</b>	211	260	229	215	368	23	30	53	17	26	310	352
% Change Last Year	-39.9%	-17.2%	-21.6%	-30.6%	5.7%	-88.5%	-91.0%	-75.9%	-95.0%	-95.1%	60.6%	64.5%
<b>Value (\$000s)</b>	36,220	43,776	38,568	37,671	59,553	2,309	5,116	8,932	3,677	5,790	53,003	61,159
% Change Last Year	-28.3%	-1.3%	-8.8%	-19.9%	21.5%	-93.3%	-89.1%	-80.0%	-93.5%	-92.9%	60.6%	85.7%
<b>Unincorp. Units</b>	190	242	214	207	354	19	24	22	21	23	295	335
% Change Last Year	-41.2%	-15.1%	-17.7%	-26.1%	13.5%	-89.1%	-92.2%	-88.9%	-93.1%	-95.3%	64.8%	65.0%
<b>Value (\$000s)</b>	\$ 32,948	\$ 40,792	\$ 36,466	\$ 35,003	\$ 54,823	\$ 1,207	\$ 3,519	\$ 3,807	\$ 3,798	\$ 4,667	\$ 4,999	\$ 56,771
% Change Last Year	-29.2%	0.1%	-5.1%	-14.9%	24.3%	-96.2%	-91.6%	-89.3%	-92.5%	-93.7%	60.6%	79.0%
<b>Incorp. Units</b>	21	18	15	8	14	4	25	22	34	3	15	17
% Change Last Year	-25.0%	-37.9%	-53.1%	-73.3%	-61.1%	-84.0%	316.7%	-29.0%	-50.0%	-91.9%	7.1%	54.5%
<b>Value (\$000s)</b>	\$ 3,272	\$ 2,983	\$ 2,103	\$ 2,668	\$ 4,731	\$ 1,102	\$ 5,230	\$ 9,167	\$ 6,212	\$ 1,123	\$ 3,009	\$ 4,387
% Change Last Year	-17.3%	-17.2%	-45.7%	-55.1%	-4.0%	-57.8%	227.5%	78.9%	69.0%	-82.6%	60.2%	262.9%

\*-Data unavailable for Slidell

Source: Economic Development Information Clearing House

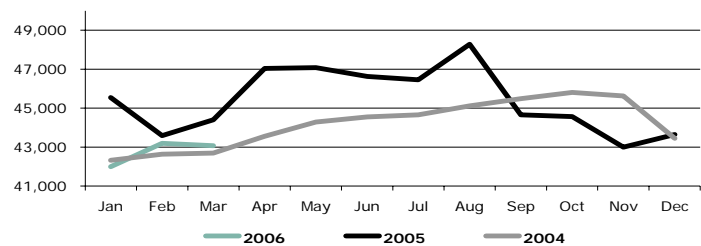
## Tangipahoa Parish

### EMPLOYMENT

#### TANGIPAHOA

	Apr-05	May-05	Jun-05	Jul-05	Aug-05	Sep-05	Oct-05	Nov-05	Dec-05	Jan-06	Feb-06	Mar-06
<b>Labor Force</b>	49,372	49,707	50,225	49,786	51,503	55,042	53,404	52,399	47,032	44,927	45,400	45,364
% Change Last Year	5.9%	4.0%	2.3%	1.7%	6.6%	12.7%	9.1%	7.1%	1.2%	-7.9%	-2.3%	-3.2%
<b>Total Employment</b>	47,042	47,126	46,636	46,457	48,286	44,656	44,566	42,998	43,649	41,997	43,198	43,069
% Change Last Year	8.0%	6.4%	4.7%	4.0%	7.0%	-2.4%	-2.7%	-5.7%	0.5%	-7.8%	-0.9%	-3.0%
<b>Unemployed</b>	2,330	2,581	3,589	3,329	3,217	10,386	8,838	9,401	3,383	2,930	2,202	2,295
% Change Last Year	-24.1%	-26.7%	-20.8%	-22.2%	1.2%	238.3%	180.6%	184.0%	12.1%	-9.2%	-23.8%	-6.7%
<b>Unemployment rate</b>	4.7%	5.2%	7.1%	6.7%	6.2%	18.9%	16.5%	17.9%	7.2%	6.5%	4.9%	5.1%
Change Last Year	-1.9%	-2.2%	-2.1%	-2.0%	-0.4%	12.6%	10.1%	11.1%	0.7%	-0.6%	-1.3%	-0.1%

Employment Tangipahoa



	2Q-05	3Q-05	4Q-05	1Q-06
<b>Labor Force</b>	49,768	52,110	50,945	45,230
% Change Last Year	4.0%	7.0%	5.9%	-0.7%
<b>Total Employment</b>	46,935	46,466	43,738	42,755
% Change Last Year	6.4%	2.8%	-2.7%	0.5%
<b>Unemployed</b>	2,833	5,644	7,207	2,476
% Change Last Year	-26.7%	60.8%	128.2%	-17.5%
<b>Unemployment rate</b>	5.7%	10.6%	13.9%	5.5%
Change Last Year	-2.1%	3.4%	7.3%	-1.1%

Source: Louisiana Department of Labor ; \* Data based on new benchmark - No data available for the previous years.

### SALES TAX

#### TANGIPAHOA

	Apr-05	May-05	Jun-05	Jul-05	Aug-05	Sep-05	Oct-05	Nov-05	Dec-05	Jan-06	Feb-06	Mar-06
<b>Total Sales (Mil.)</b>	\$ 110.48	\$ 103.04	\$ 101.99	\$ 110.62	\$ 98.86	\$ 74.70	\$ 140.92	\$ 144.05	\$ 143.13	\$ 176.49	\$ 129.26	\$ 144.67
% Change Last Year	6.1%	6.5%	6.8%	0.5%	-4.1%	-25.7%	42.0%	48.9%	58.1%	49.7%	39.5%	56.5%
<b>Sales Tax Collected (Mil.)</b>	\$ 2.21	\$ 2.06	\$ 2.04	\$ 2.21	\$ 1.98	\$ 1.49	\$ 2.82	\$ 2.88	\$ 2.86	\$ 3.53	\$ 2.59	\$ 2.89
% Change Last Year	6.1%	6.5%	6.8%	0.5%	-4.1%	-25.7%	42.0%	48.9%	58.1%	49.7%	39.5%	56.5%

Source: Tangipahoa Parish Council - School Board

### Residential Building Permits

#### TANGIPAHOA

	Apr-05	May-05	Jun-05	Jul-05	Aug-05	Sep-05	Oct-05	Nov-05	Dec-05	Jan-06	Feb-06	Mar-06
<b>Total Units</b>	51	71	69	84	69	139	114	83	70	129	110	175
% Change Last Year	-17.7%	36.5%	13.3%	29.2%	-1.4%	131.7%	-26.0%	118.4%	25.0%	79.2%	59.4%	153.6%
<b>Value (\$000s)</b>	12,884	13,723	14,516	8,471	8,766	13,647	6,597	10,515	10,399	9,250	11,216	9,994
% Change Last Year	81.3%	158.3%	98.7%	-1.3%	32.0%	79.9%	-52.5%	106.0%	42.3%	128.2%	-2.4%	-100.0%
<b>Unincorp. Units</b>	39	53	58	70	60	102	75	59	56	97	88	146
% Change Last Year	-22.0%	23.3%	16.0%	37.3%	9.1%	96.2%	-46.4%	96.7%	24.4%	61.7%	44.3%	160.7%
<b>Value (\$000s)</b>	\$ 5,003	\$ 6,745	\$ 7,951	\$ 6,315	\$ 7,817	\$ 9,294	\$ 2,237	\$ 7,435	\$ 7,974	\$ 13,113	\$ 12,247	\$ 19,564
% Change Last Year	-12.7%	84.9%	27.3%	-0.5%	48.8%	43.9%	-82.2%	88.4%	31.6%	92.2%	120.8%	178.0%
<b>Incorp. Units</b>	12	18	11	14	9	37	39	24	14	32	22	29
% Change Last Year	0.0%	100.0%	0.0%	0.0%	-40.0%	362.5%	178.6%	200.0%	27.3%	166.7%	175.0%	123.1%
<b>Value (\$000s)</b>	\$ 1,581	\$ 2,726	\$ 1,665	\$ 2,156	\$ 949	\$ 4,353	\$ 4,360	\$ 3,080	\$ 2,426	\$ 5,670	\$ 2,958	\$ 5,417
% Change Last Year	15.1%	63.7%	57.0%	-3.5%	-31.6%	286.9%	227.6%	166.4%	94.4%	259.1%	171.2%	222.0%

Source: Tangipahoa - Building Permit Office

## Livingston Parish

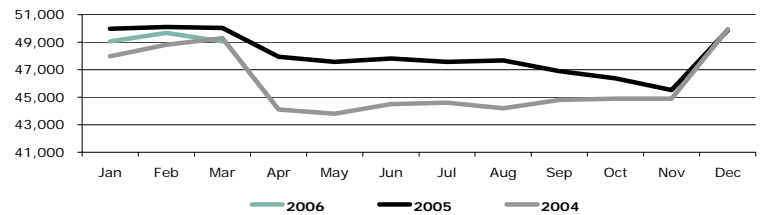
### EMPLOYMENT

#### LIVINGSTON

	Apr-05	May-05	Jun-05	Jul-05	Aug-05	Sep-05	Oct-05	Nov-05	Dec-05	Jan-06	Feb-06	Mar-06
<b>Labor Force</b>	<b>50,076</b>	<b>50,004</b>	<b>50,363</b>	<b>50,695</b>	<b>50,548</b>	<b>51,438</b>	<b>49,931</b>	<b>49,374</b>	<b>51,823</b>	<b>50,947</b>	<b>51,228</b>	<b>50,735</b>
% Change Last Year	5.9%	5.9%	5.5%	4.5%	7.3%	8.7%	4.2%	2.9%	-1.8%	-3.9%	-3.0%	-3.0%
<b>Total Employment</b>	<b>47,943</b>	<b>47,653</b>	<b>47,813</b>	<b>47,565</b>	<b>47,676</b>	<b>46,906</b>	<b>46,364</b>	<b>45,528</b>	<b>49,874</b>	<b>49,063</b>	<b>49,681</b>	<b>49,061</b>
% Change Last Year	8.7%	8.8%	8.3%	6.9%	8.1%	5.6%	3.3%	1.4%	0.2%	-1.8%	-0.9%	-2.0%
<b>Unemployed</b>	<b>2,133</b>	<b>2,351</b>	<b>2,550</b>	<b>3,039</b>	<b>2,872</b>	<b>4,532</b>	<b>3,567</b>	<b>3,846</b>	<b>1,949</b>	<b>1,884</b>	<b>1,547</b>	<b>1,674</b>
% Change Last Year	-33.3%	-30.9%	-33.0%	-22.1%	-4.3%	56.3%	18.9%	24.1%	-31.3%	-38.1%	-42.3%	-26.1%
<b>Unemployment rate</b>	<b>4.3%</b>	<b>4.7%</b>	<b>5.1%</b>	<b>6.0%</b>	<b>5.7%</b>	<b>8.8%</b>	<b>7.1%</b>	<b>7.8%</b>	<b>3.8%</b>	<b>3.7%</b>	<b>3.0%</b>	<b>3.3%</b>
Change Last Year	-2.4%	-2.6%	-2.5%	-2.0%	-0.7%	2.7%	0.8%	1.3%	-1.6%	-2.0%	-2.1%	-1.0%

	2QT-05	3QT-05	4QT-05	1QT-06
<b>Labor Force</b>	<b>50,363</b>	<b>50,894</b>	<b>50,376</b>	<b>50,970</b>
% Change Last Year	5.5%	6.8%	1.6%	-3.3%
<b>Total Employment</b>	<b>47,813</b>	<b>47,413</b>	<b>47,255</b>	<b>49,268</b>
% Change Last Year	8.3%	6.9%	1.4%	-1.5%
<b>Unemployed</b>	<b>2,550</b>	<b>3,481</b>	<b>3,121</b>	<b>1,702</b>
% Change Last Year	-33.0%	6.6%	4.7%	-36.1%
<b>Unemployment rate</b>	<b>5.1%</b>	<b>6.8%</b>	<b>6.2%</b>	<b>3.3%</b>
Change Last Year	-2.5%	0.0%	0.2%	-1.7%

Employment Livingston



Source: Louisiana Department of Labor; \* Data based on new benchmark - No data available for the previous years.

### SALES TAX

#### LIVINGSTON

	Apr-05	May-05	Jun-05	Jul-05	Aug-05	Sep-05	Oct-05	Nov-05	Dec-05	Jan-06	Feb-06	Mar-06
<b>Total Sales (Mil.)</b>	<b>\$ 82.40</b>	<b>\$ 77.53</b>	<b>\$ 80.79</b>	<b>\$ 83.56</b>	<b>\$ 77.46</b>	<b>\$ 75.32</b>	<b>\$ 83.56</b>	<b>\$ 77.46</b>	<b>\$ 75.32</b>	<b>\$ 108.51</b>	<b>\$ 88.24</b>	<b>\$ 89.18</b>
% Change Last Year	2.3%	1.2%	11.5%	7.4%	-2.3%	-0.2%	24.3%	40.8%	30.0%	26.2%	19.9%	30.4%
<b>Sales Tax Collected (Mil.)</b>	<b>\$ 4.14</b>	<b>\$ 3.89</b>	<b>\$ 4.09</b>	<b>\$ 4.19</b>	<b>\$ 3.90</b>	<b>\$ 3.79</b>	<b>\$ 4.19</b>	<b>\$ 3.90</b>	<b>\$ 3.79</b>	<b>\$ 5.43</b>	<b>\$ 4.43</b>	<b>\$ 4.48</b>
% Change Last Year	10.8%	3.3%	13.2%	7.9%	-4.6%	-0.5%	25.8%	40.2%	29.8%	23.9%	19.9%	29.3%

Source: Livingston Parish Sales Tax Department

### Residential Building Permits

#### LIVINGSTON

	Apr-05	May-05	Jun-05	Jul-05	Aug-05	Sep-05	Oct-05	Nov-05	Dec-05	Jan-06	Feb-06	Mar-06
<b>Total Units</b>	<b>115</b>	<b>83</b>	<b>97</b>	<b>80</b>	<b>114</b>	<b>133</b>	<b>94</b>	<b>107</b>	<b>106</b>	<b>121</b>	<b>108</b>	<b>231</b>
% Change Last Year	25.0%	25.8%	-2.0%	-25.9%	-2.6%	95.6%	40.3%	25.9%	9.3%	95.2%	14.9%	145.7%
<b>Value (\$000s)</b>	<b>10,236</b>	<b>6,749</b>	<b>8,203</b>	<b>6,749</b>	<b>9,119</b>	<b>10,873</b>	<b>7,834</b>	<b>9,210</b>	<b>9,111</b>	<b>9,460</b>	<b>9,870</b>	<b>19,947</b>
% Change Last Year	13.4%	17.5%	-10.9%	-28.7%	-17.2%	79.4%	33.2%	36.6%	9.6%	90.0%	28.7%	126.5%
<b>Unicorp. Units</b>	<b>107</b>	<b>81</b>	<b>91</b>	<b>80</b>	<b>114</b>	<b>133</b>	<b>88</b>	<b>104</b>	<b>99</b>	<b>117</b>	<b>107</b>	<b>224</b>
% Change Last Year	18.9%	28.6%	-4.2%	-21.6%	0.0%	114.5%	31.3%	36.8%	5.3%	95.0%	18.9%	173.2%
<b>Value (\$000s)</b>	<b>\$ 9,261</b>	<b>\$ 6,534</b>	<b>\$ 7,717</b>	<b>\$ 6,749</b>	<b>\$ 9,119</b>	<b>\$ 10,873</b>	<b>\$ 7,186</b>	<b>\$ 8,887</b>	<b>\$ 8,410</b>	<b>\$ 9,076</b>	<b>\$ 9,710</b>	<b>\$ 19,083</b>
% Change Last Year	5.3%	21.3%	-11.3%	-22.9%	-14.7%	101.6%	22.2%	43.6%	8.8%	86.9%	31.9%	161.5%
<b>Incorp. Units</b>	<b>8</b>	<b>2</b>	<b>6</b>	<b>0</b>	<b>0</b>	<b>0</b>	<b>6</b>	<b>3</b>	<b>7</b>	<b>4</b>	<b>1</b>	<b>7</b>
% Change Last Year	300.0%	-33.3%	50.0%	0.0%	0.0%	0.0%	na	-66.7%	133.3%	100.0%	-75.0%	-41.7%
<b>Value (\$000s)</b>	<b>\$ 975</b>	<b>\$ 215</b>	<b>\$ 486</b>	<b>\$ -</b>	<b>\$ -</b>	<b>\$ -</b>	<b>\$ 648</b>	<b>\$ 323</b>	<b>\$ 701</b>	<b>\$ 383</b>	<b>\$ 160</b>	<b>\$ 864</b>
% Change Last Year	324.0%	-39.4%	-3.4%	0.0%	0.0%	0.0%	na	41.3%	20.9%	211.4%	-48.7%	-42.8%

Source: Livingston Parish - Building Permit Office

## Washington Parish

### EMPLOYMENT

#### WASHINGTON

	Apr-05	May-05	Jun-05	Jul-05	Aug-05	Sep-05	Oct-05	Nov-05	Dec-05	Jan-06	Feb-06	Mar-06
<b>Labor Force</b>	<b>16,780</b>	<b>17,132</b>	<b>17,515</b>	<b>17,091</b>	<b>17,199</b>	<b>16,958</b>	<b>16,899</b>	<b>16,920</b>	<b>15,403</b>	<b>14,386</b>	<b>14,350</b>	<b>14,416</b>
% Change Last Year	14.4%	15.2%	14.7%	14.6%	15.2%	11.6%	7.2%	7.4%	-14.4%	-18.0%	-17.7%	-18.8%
<b>Total Employment</b>	<b>15,861</b>	<b>16,093</b>	<b>16,063</b>	<b>15,779</b>	<b>15,962</b>	<b>14,372</b>	<b>14,257</b>	<b>14,004</b>	<b>14,287</b>	<b>13,344</b>	<b>13,594</b>	<b>13,640</b>
% Change Last Year	15.9%	16.4%	15.3%	15.5%	14.4%	1.1%	-2.9%	-4.1%	-15.2%	-18.1%	-16.5%	-18.5%
<b>Unemployed</b>	<b>919</b>	<b>1,039</b>	<b>1,452</b>	<b>1,312</b>	<b>1,237</b>	<b>2,586</b>	<b>2,648</b>	<b>2,916</b>	<b>1,116</b>	<b>1,042</b>	<b>756</b>	<b>776</b>
% Change Last Year	-6.2%	0.1%	8.4%	5.0%	26.2%	163.9%	145.2%	153.6%	-3.3%	-17.6%	-34.9%	-24.0%
<b>Unemployment rate</b>	<b>5.5%</b>	<b>6.1%</b>	<b>830.0%</b>	<b>7.7%</b>	<b>7.2%</b>	<b>15.2%</b>	<b>15.7%</b>	<b>17.2%</b>	<b>7.2%</b>	<b>7.2%</b>	<b>5.3%</b>	<b>5.4%</b>
Change Last Year	-1.2%	-0.9%	-0.5%	-0.7%	0.7%	8.8%	8.9%	9.9%	0.8%	0.0%	-1.4%	-0.4%

	2QT-05	3QT-05	4QT-05	1QT-06
<b>Labor Force</b>	<b>17,142</b>	<b>17,083</b>	<b>16,407</b>	<b>14,384</b>
% Change Last Year	14.8%	13.8%	-0.6%	-18.2%
<b>Total Employment</b>	<b>16,006</b>	<b>15,371</b>	<b>14,181</b>	<b>13,526</b>
% Change Last Year	15.8%	10.2%	-7.8%	-17.7%
<b>Unemployed</b>	<b>1,137</b>	<b>1,712</b>	<b>2,227</b>	<b>858</b>
% Change Last Year	-11.6%	60.0%	97.4%	-25.3%
<b>Unemployment rate</b>	<b>6.6%</b>	<b>10.0%</b>	<b>13.4%</b>	<b>6.0%</b>
Change Last Year	-0.9%	2.9%	6.5%	-0.6%



Source: Louisiana Department of Labor - \* Data based on new benchmark - No data available for the previous years.

### SALES TAX

#### WASHINGTON

	Apr-05	May-05	Jun-05	Jul-05	Aug-05	Sep-05	Oct-05	Nov-05	Dec-05	Jan-06	Feb-06	Mar-06
<b>Total Sales (Mil.)</b>	na	na	na	na	na	na	na	na	na	na	na	na
% Change Last Year	na	na	na	na	na	na	na	na	na	na	na	na
<b>Sales Tax Collected (Mil.)</b>	<b>\$ 1.32</b>	<b>\$ 1.45</b>	<b>\$ 1.40</b>	<b>\$ 1.51</b>	<b>\$ 1.20</b>	<b>\$ 0.86</b>	<b>\$ 1.52</b>	<b>\$ 1.62</b>	<b>\$ 1.73</b>	na	na	na
% Change Last Year	-4.1%	16.1%	12.6%	10.8%	-7.6%	-34.4%	13.1%	55.1%	23.6%	na	na	na

Source: Washington Parish Sheriff's Office - Sales and Use Tax Department

### Residential Building Permits

#### WASHINGTON

	Apr-05	May-05	Jun-05	Jul-05	Aug-05	Sep-05	Oct-05	Nov-05	Dec-05	Jan-06	Feb-06	Mar-06
<b>Total Units</b>	<b>18</b>	<b>10</b>	<b>13</b>	<b>8</b>	<b>6</b>	<b>2</b>	<b>11</b>	<b>22</b>	<b>12</b>	<b>26</b>	<b>30</b>	<b>25</b>
% Change Last Year	-10.0%	-28.6%	-27.8%	-42.9%	-69.3%	-70.8%	-42.1%	100.0%	-29.4%	160.0%	36.4%	56.3%
<b>Value (\$000s)</b>	<b>\$ 1,259</b>	<b>\$ 807</b>	<b>\$ 909</b>	<b>\$ 662</b>	<b>\$ 426</b>	<b>\$ 191</b>	<b>\$ 1,113</b>	<b>\$ 2,122</b>	<b>\$ 1,507</b>	<b>\$ 3,280</b>	<b>\$ 3,356</b>	<b>\$ 2,917</b>
% Change Last Year	-4.6%	-35.0%	-19.6%	-44.3%	-69.3%	-70.8%	-34.5%	14.2%	69.2%	643.7%	66.2%	182.3%
<b>Unincorp. Units</b>	<b>14</b>	<b>10</b>	<b>12</b>	<b>7</b>	<b>6</b>	<b>2</b>	<b>11</b>	<b>21</b>	<b>10</b>	<b>20</b>	<b>26</b>	<b>22</b>
% Change Last Year	16.7%	11.1%	33.3%	-41.7%	-45.5%	-66.7%	-8.3%	162.5%	25.0%	233.3%	116.7%	100.0%
<b>Value (\$000s)</b>	<b>\$ 1,181</b>	<b>\$ 807</b>	<b>\$ 833</b>	<b>\$ 612</b>	<b>\$ 426</b>	<b>\$ 191</b>	<b>\$ 1,113</b>	<b>\$ 1,972</b>	<b>\$ 1,290</b>	<b>\$ 2,523</b>	<b>\$ 2,811</b>	<b>\$ 2,887</b>
% Change Last Year	-5.1%	-25.9%	4.1%	-43.8%	-59.4%	-62.4%	-28.6%	180.4%	123.8%	543.6%	50.4%	276.4%
<b>Incorp. Units</b>	<b>4</b>	<b>0</b>	<b>1</b>	<b>1</b>	<b>0</b>	<b>0</b>	<b>-</b>	<b>1</b>	<b>2</b>	<b>6</b>	<b>4</b>	<b>3</b>
% Change Last Year	-50.0%	-100.0%	-88.9%	-50.0%	0.0%	0.0%	-100.0%	-66.7%	-77.8%	50.0%	-60.0%	-40.0%
<b>Value (\$000s)</b>	<b>\$ 78</b>	<b>\$ 0</b>	<b>\$ 76</b>	<b>\$ 50</b>	<b>\$ -</b>	<b>\$ -</b>	<b>\$ -</b>	<b>\$ 150</b>	<b>\$ 217</b>	<b>\$ 757</b>	<b>\$ 545</b>	<b>\$ 30</b>
% Change Last Year	4.3%	-100.0%	-77.0%	-50.1%	0.0%	0.0%	-100.0%	-1.1%	-31.0%	1444.9%	264.1%	-88.7%

Source: Washington Parish - Building Permit Office

## St. Helena Parish

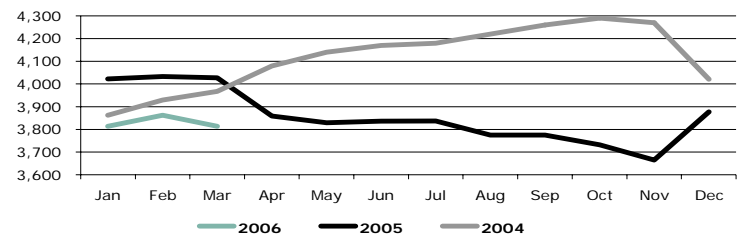
### EMPLOYMENT

#### ST. HELENA

	Apr-05	May-05	Jun-05	Jul-05	Aug-05	Sep-05	Oct-05	Nov-05	Dec-05	Jan-06	Feb-06	Mar-06
<b>Labor Force</b>	4,213	4,194	4,363	4,336	4,294	4,925	4,733	4,746	4,380	4,228	4,175	4,095
% Change Last Year	-2.3%	-4.2%	-2.8%	-3.2%	-3.7%	9.0%	5.2%	5.5%	2.0%	-4.6%	-5.3%	-5.3%
<b>Total Employment</b>	3,859	3,836	3,851	3,836	3,837	3,775	3,732	3,665	3,877	3,814	3,862	3,814
% Change Last Year	-5.4%	-7.3%	-7.6%	-8.2%	-9.1%	-11.8%	-13.0%	-14.2%	-3.6%	-5.2%	-4.2%	-5.3%
<b>Unemployed</b>	354	358	512	500	457	1,150	1,001	1,081	503	414	313	281
% Change Last Year	53.9%	49.2%	60.0%	66.7%	90.4%	379.2%	376.7%	370.0%	84.9%	1.0%	-16.8%	-4.7%
<b>Unemployment rate</b>	8.4%	8.5%	11.7%	11.5%	10.6%	23.4%	21.1%	22.8%	11.5%	9.8%	7.5%	6.9%
Change Last Year	3.1%	3.0%	4.5%	4.8%	5.2%	18.1%	16.5%	17.6%	5.2%	-0.6%	-1.0%	0.1%

	2QT-05	3QT-05	4QT-05	1QT-06
<b>Labor Force</b>	4,257	4,518	4,620	4,166
% Change Last Year	-3.1%	0.7%	4.3%	5.1%
<b>Total Employment</b>	3,849	3,816	3,758	3,830
% Change Last Year	-6.8%	-9.7%	-10.4%	-4.9%
<b>Unemployed</b>	408	702	862	336
% Change Last Year	58.9%	107.1%	263.1%	-6.8%
<b>Unemployment rate</b>	9.5%	15.2%	18.5%	8.1%
Change Last Year	3.5%	9.4%	13.1%	-0.1%

Employment St Helena



Source: Louisiana Department of Labor : \* Data based on new benchmark - No data available for the previous years.

### SALES TAX

#### ST. HELENA

	Apr-05	May-05	Jun-05	Jul-05	Aug-05	Sep-05	Oct-05	Nov-05	Dec-05	Jan-06	Feb-06	Mar-06
<b>Total Sales (Mil.)</b>	na	na	na	na	na	na	na	na	na	na	na	na
% Change Last Year	na	na	na	na	na	na	na	na	na	na	na	na
<b>Sales Tax Collected (Mil.)</b>	\$ 0.19	\$ 0.17	\$ 0.21	\$ 0.20	\$ 0.16	\$ 0.17	\$ 0.20	\$ 0.23	\$ 0.18	\$ 0.30	\$ 0.18	\$ 0.22
% Change Last Year	-16.6%	9.3%	51.6%	-20.4%	9.0%	11.6%	-7.0%	66.2%	2.5%	35.5%	23.4%	45.8%

Source: St. Helena Parish Sheriff's Office

### Residential Building Permits

#### ST. HELENA

	Apr-05	May-05	Jun-05	Jul-05	Aug-05	Sep-05	Oct-05	Nov-05	Dec-05	Jan-06	Feb-06	Mar-06
<b>Total Units</b>	3	2	5	4	1	6	0	3	1	na	na	na
% Change Last Year	-66.7%	NA	40.0%	33.3%	-50.0%	200.0%	-100.0%	50.0%	-50.0%	na	na	na
<b>Value (\$000s)</b>	\$ 525.00	\$ 300.00	\$ 820.00	\$ 360.00	\$ 175.00	\$ 790.00	\$ -	\$ 237.00	\$ 130.00	na	na	na
% Change Last Year	-54.6%	NA	951.3%	-33.3%	-60.4%	172.4%	-100.0%	-52.6%	-61.8%	na	na	na

Source: St Helena Parish - Building Permit Office



Business Research Center  
1514 Martens Drive  
Hammond, LA 70401

Non-Profit Org.  
U.S. Postage  
PAID  
Bulk Rate  
Permit No. 193  
Hammond LA



**This publication is jointly produced by Southeastern Louisiana University Departments of:**

- Business Research Center
- Economic & Business Development Center
- Southeast Louisiana Business Center
- College of Business

**Editors:**

William Joubert  
Jennifer Henry

**Administrative Secretary:**

Farrah Laciura

**Graphic Designer:**

Jennifer Henry

**Graduate Assistant:**

Jennifer Henry

**Our Special Thanks**

This Edition of the *Economic Reporter* would not exist without the valuable contribution of:

**Southeastern Louisiana University:** Dr. A. M. M. Jamal,  
Mr. John Giamalva, Office of Public Information

**St. Tammany Building Permit and Sales Tax Collection Offices**

**St. Tammany Economic Development Foundation**

**Tangipahoa Building Permit Office and School Board**

**Tangipahoa Economic Development Foundation**

**Livingston Building Permit and Sales Tax Collection Offices**

**Livingston Economic Development Council**

**Washington Building Permit and Sales Tax Collection Offices**

**Washington Economic Development Foundation**

**St. Helena Building Permit and Sales Tax Offices.**