

Economic Reporter

Promoting Economic Development in Southeast Louisiana

WINTER 2007

Vol. 3 · No. 4

NATIONAL

- Employment
- Retail Sales
- Building Permits

STATE

- Employment
- Retail Sales
- Building Permits

REGIONAL

- Employment
- Retail Sales
- Building Permits

NATIONAL, STATE, & REGIONAL COMPARISON

LOCAL

- St. Tammany
- Tangipahoa
- Livingston
- Washington
- St. Helena

CONTACT US

Southeastern Louisiana University
 Business Research Ctr.
 1514 Martens Drive
 Hammond, LA 70401

Phone: (985) 549-3199
 Fax: (985) 549-2127
 brc@selu.edu

NATIONAL

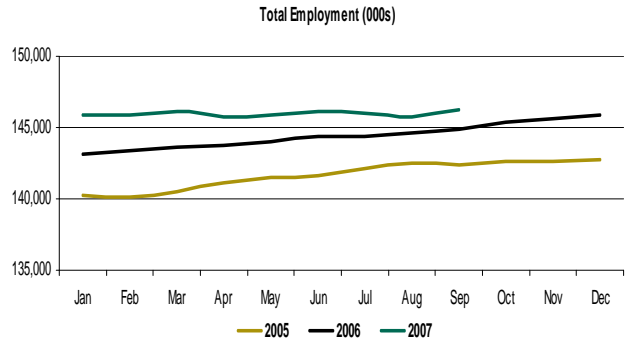
U.S. Economy

EMPLOYMENT

UNITED STATES (Numbers in Thousands)

	Oct 06	Nov 06	Dec 06	Jan 07	Feb 07	Mar 07	Apr 07	May 07	Jun 07	Jul 07	Aug 07	Sep 07
Labor Force	152,052	152,449	152,775	152,958	152,725	152,884	152,542	152,776	153,085	153,182	152,886	153,506
% Change vs Prior Year	1.3%	1.5%	1.7%	1.9%	1.5%	1.5%	1.1%	1.1%	1.1%	1.1%	0.8%	1.1%
Total Employment	145,337	145,623	145,926	145,915	145,888	146,145	145,713	145,913	146,087	146,045	145,753	146,260
% Change vs Prior Year	1.9%	2.1%	2.2%	2.0%	1.8%	1.7%	1.4%	1.3%	1.2%	1.2%	0.8%	0.9%
Total Nonfarm Emp.	136,601	136,783	136,982	137,108	137,133	137,310	137,356	137,518	137,625	137,682	137,756	137,837
% Change vs Prior Year	1.9%	1.8%	1.9%	1.5%	1.3%	1.2%	1.2%	1.3%	1.3%	1.1%	1.0%	1.0%
Number Unemployed	6,715	6,826	6,849	7,043	6,837	6,738	6,829	6,863	6,997	7,137	7,133	7,246
% Change vs Prior Year	-9.5%	-9.9%	-7.1%	0.3%	-4.5%	-3.9%	-3.8%	-2.0%	0.2%	-1.3%	0.2%	4.8%
Unemployment Rate	4.4%	4.5%	4.5%	4.6%	4.5%	4.4%	4.5%	4.5%	4.6%	4.7%	4.7%	4.7%
Change vs Prior Year	-0.5%	-0.5%	-0.4%	-0.1%	-0.3%	-0.3%	-0.2%	-0.1%	0.0%	-0.1%	0.0%	0.1%

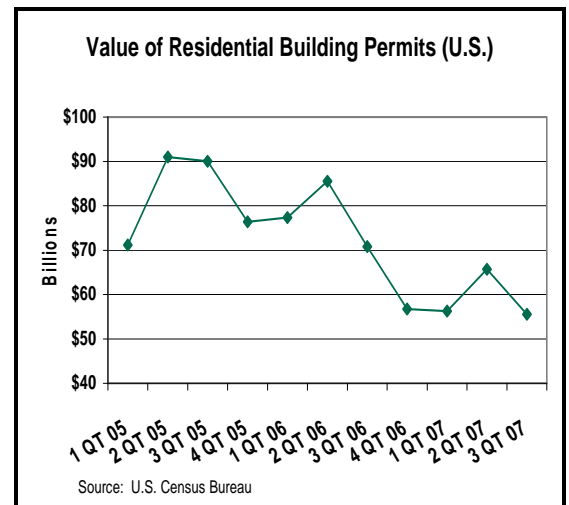
	4Q - 06	1Q - 07	2Q - 07	3Q - 07
Labor Force	152,425	152,856	152,801	153,191
% Change vs Prior Year	1.5%	1.6%	1.1%	1.0%
Total Employment	145,629	145,983	145,904	146,019
% Change vs Prior Year	2.1%	1.8%	1.3%	1.0%
Total Nonfarm Emp.	136,789	137,184	137,500	137,758
% Change vs Prior Year	1.9%	1.3%	1.2%	1.0%
Number Unemployed	6,797	6,873	6,896	7,172
% Change vs Prior Year	-8.8%	-2.7%	-1.9%	1.2%
Unemployment Rate	4.5%	4.5%	4.5%	4.7%
Change vs Prior Year	-0.5%	-0.2%	-0.1%	0.0%



Source: Louisiana Department of Labor



Source: U.S. Census Bureau



Source: U.S. Census Bureau

STATE

Louisiana Economy

EMPLOYMENT

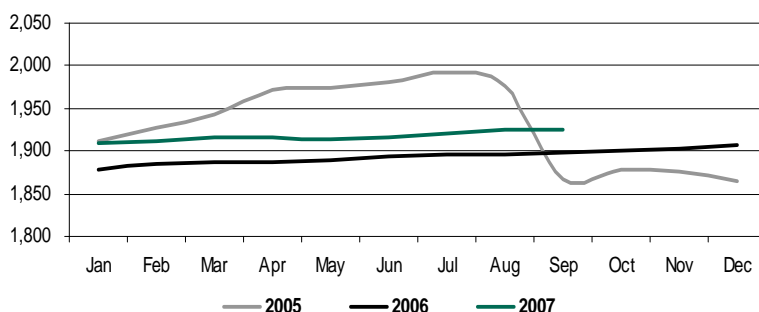
LOUISIANA (Numbers in Thousands)

	Oct 06	Nov 06	Dec 06	Jan 07	Feb 07	Mar 07	Apr 07	May 07	Jun 07	Jul 07	Aug 07	Sep 07
Labor Force	1,984	1,986	1,988	1,985	1,988	1,995	1,996	1,997	1,989	1,993	1,999	2,002
% Change vs Prior Year	-5.6%	-5.7%	0.3%	0.9%	1.0%	1.5%	1.6%	1.6%	1.3%	1.8%	1.6%	1.3%
Total Employment	1,901	1,903	1,907	1,909	1,912	1,917	1,915	1,915	1,916	1,920	1,925	1,924
% Change vs Prior Year	1.2%	1.5%	2.2%	1.6%	1.5%	1.6%	1.5%	1.3%	1.2%	1.3%	1.5%	1.3%
Total Nonfarm Emp.	1,879	1,884	1,894	1,896	1,905	1,910	1,907	1,911	1,916	1,918	1,933	1,933
% Change vs Prior Year	5.8%	4.6%	4.2%	4.8%	4.5%	4.1%	3.9%	3.6%	3.6%	3.8%	3.9%	3.1%
Number Unemployed	83	83	81	76	76	79	81	82	73	73	74	78
% Change vs Prior Year	-62.6%	-64.0%	-29.6%	-14.3%	-8.7%	-1.3%	6.5%	8.2%	4.4%	17.9%	2.8%	-0.3%
Unemployment Rate	4.2%	4.2%	4.1%	3.8%	3.8%	3.9%	4.0%	4.1%	3.7%	3.7%	3.7%	3.9%
Change vs Prior Year	-6.4%	-6.7%	-1.7%	-0.7%	-0.4%	-0.2%	0.1%	0.3%	0.1%	0.5%	0.0%	-0.1%

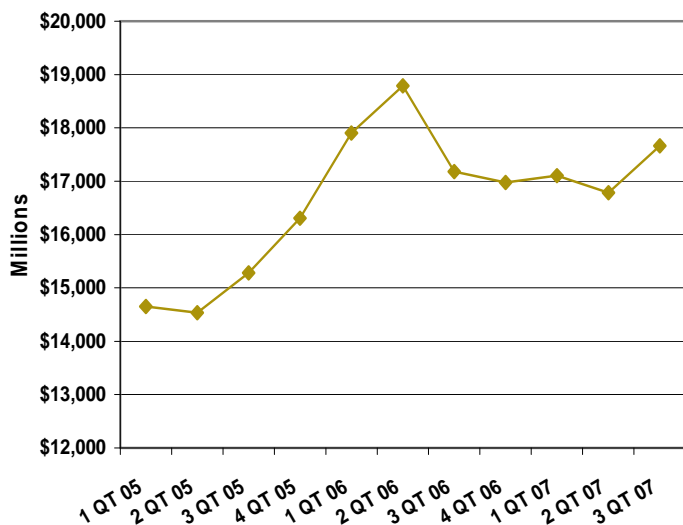
	4Q - 06	1Q - 07	2Q - 07	3Q - 07
Labor Force	1,986	1,989	1,994	1,998
% Change vs Prior Year	-3.7%	1.1%	1.5%	1.5%
Total Employment	1,904	1,912	1,915	1,923
% Change vs Prior Year	1.6%	1.5%	1.3%	1.4%
Total Nonfarm Emp.	1,886	1,904	1,911	1,928
% Change vs Prior Year	4.8%	4.5%	3.7%	3.6%
Number Unemployed	82	77	79	75
% Change vs Prior Year	-56.5%	-8.3%	6.4%	6.1%
Unemployment Rate	4.2%	3.8%	3.9%	3.8%
Change vs Prior Year	-4.9%	-0.4%	0.2%	0.1%

Source: Louisiana Department of Labor, Labor Market Statistics

Total Employment (000s)

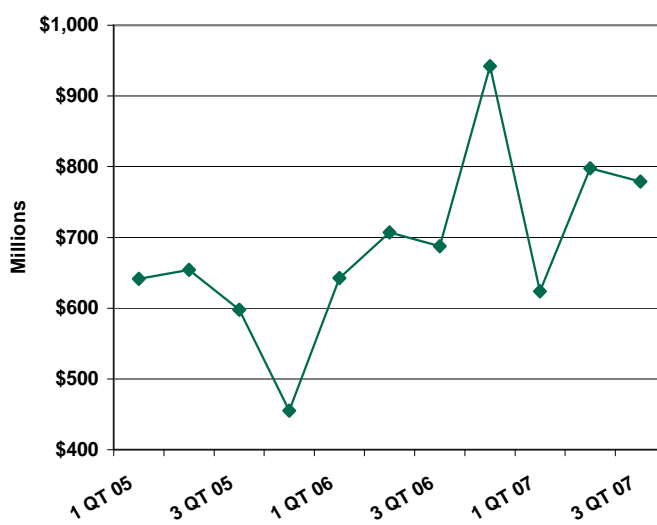


Taxable Retail Sales (Louisiana)



Source: Louisiana Department of Revenue

Value of Residential Building Permits (Louisiana)



Source: LA Department of Economic Development (includes only those 45 parishes which report monthly)

REGIONAL

Northshore Economy

EMPLOYMENT

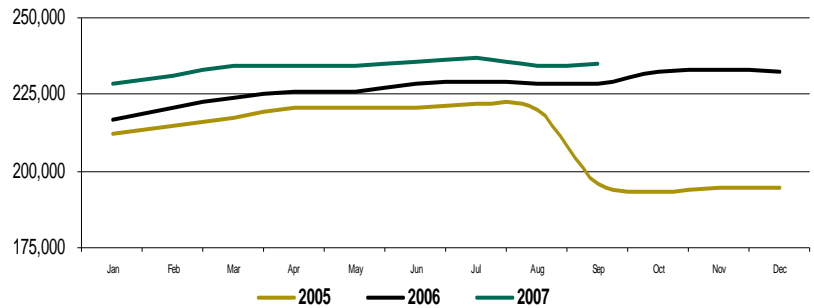
NORTHSHORE REGION

	Oct 06	Nov 06	Dec 06	Jan 07	Feb 07	Mar 07	Apr 07	May 07	Jun 07	Jul 07	Aug 07	Sep 07
Labor Force	240,621	241,509	240,549	238,238	238,434	241,519	241,095	242,541	246,152	246,236	243,313	243,131
% Change vs Prior Year	5.8%	5.4%	15.0%	4.0%	3.5%	3.7%	3.2%	3.2%	2.7%	3.3%	2.4%	2.5%
Total Employment	232,290	232,926	232,472	228,784	230,915	234,036	234,055	234,329	235,790	236,960	234,649	234,719
% Change vs Prior Year	20.1%	19.8%	19.6%	5.5%	4.8%	4.5%	3.7%	3.6%	3.3%	3.3%	2.8%	2.9%
Number Unemployed	8,331	8,583	8,077	9,454	7,519	7,729	7,281	8,454	10,704	9,650	8,952	8,666
% Change vs Prior Year	-75.5%	-75.3%	-45.1%	-23.7%	-25.3%	-14.3%	-9.0%	-4.2%	-6.3%	6.7%	-4.3%	-2.9%
Unemployment Rate	3.5%	3.6%	3.4%	4.0%	3.2%	3.2%	3.0%	3.5%	4.3%	3.9%	3.7%	3.6%
Change vs Prior Year	-11.5%	-11.6%	-3.7%	-1.4%	-1.2%	-0.7%	-0.4%	-0.3%	-0.4%	0.1%	-0.3%	-0.2%

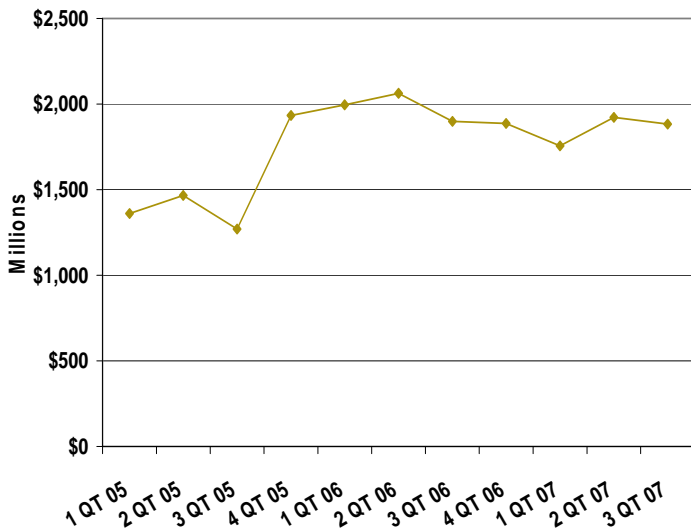
	4Q - 06	1Q - 07	2Q - 07	3Q - 07
Labor Force	240,893	239,397	243,263	244,227
% Change vs Prior Year	8.6%	3.7%	3.0%	2.7%
Total Employment	232,563	231,245	234,725	235,443
% Change vs Prior Year	19.8%	4.9%	3.5%	3.0%
Number Unemployed	8,330	8,234	8,813	9,089
% Change vs Prior Year	-70.0%	-21.5%	-6.4%	-0.2%
Unemployment Rate	3.5%	3.4%	3.6%	3.7%
Change vs Prior Year	-8.9%	-1.1%	-0.4%	-0.1%

Source: Labor Market Statistics, Local Area Unemployment Statistics Program

Total Employment

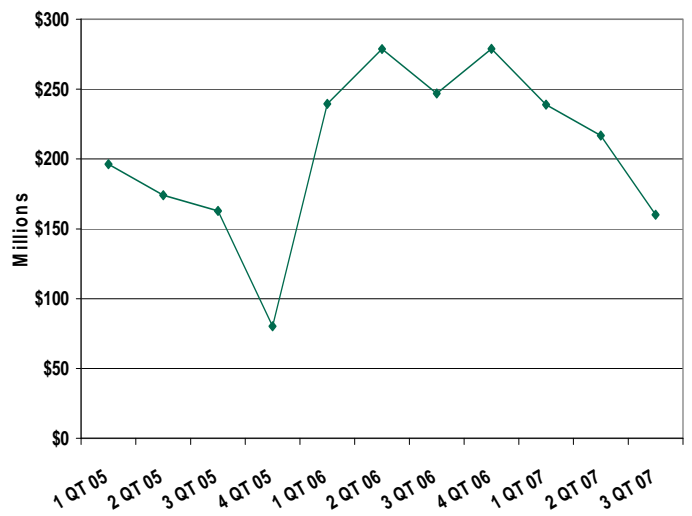


Taxable Retail Sales
(Northshore Region)



Sources: Livingston Parish School Board Sales and Use Tax Division, St. Helena Parish Sheriff's Office, St. Tammany Parish Sales and Use Tax Department, Tangipahoa Parish School Board Sales and Use Tax Division, Washington Parish Sheriff's Office Sales and Use Tax Department

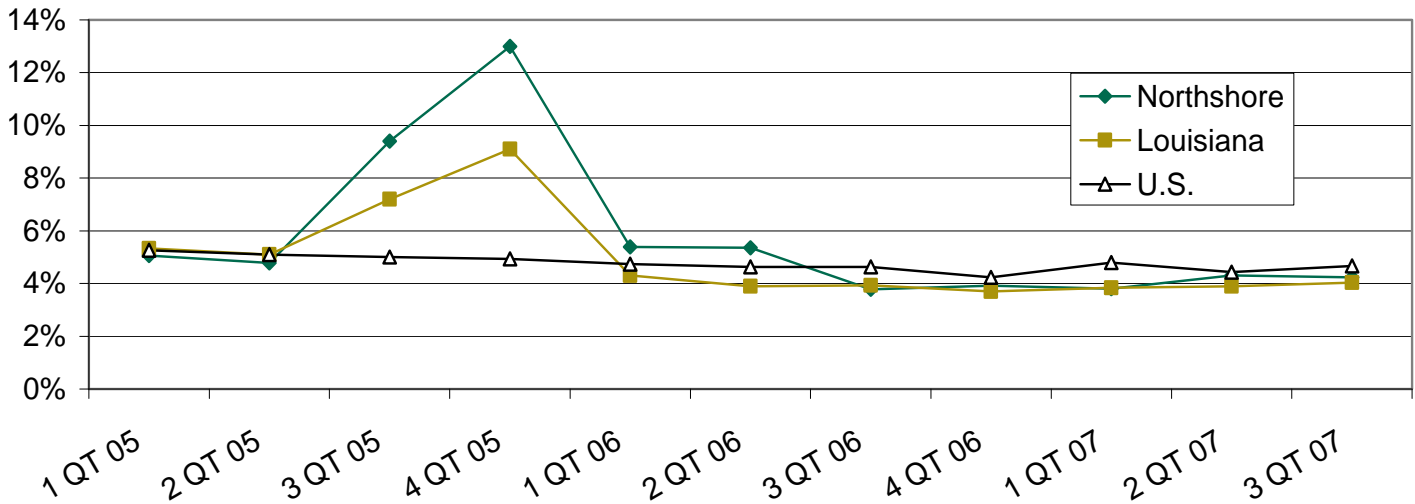
Value of Residential Building Permits
(Northshore Region)



Sources: Louisiana Department of Economic Development, Livingston Parish Permit Office, Town of Albany, City of Denham Springs, Town of Livingston, Tangipahoa Parish Permit Office, City of Hammond, Town of Independence, City of Ponchatoula, Washington Parish Permit Office, City of Bogalusa, Town of Franklinton

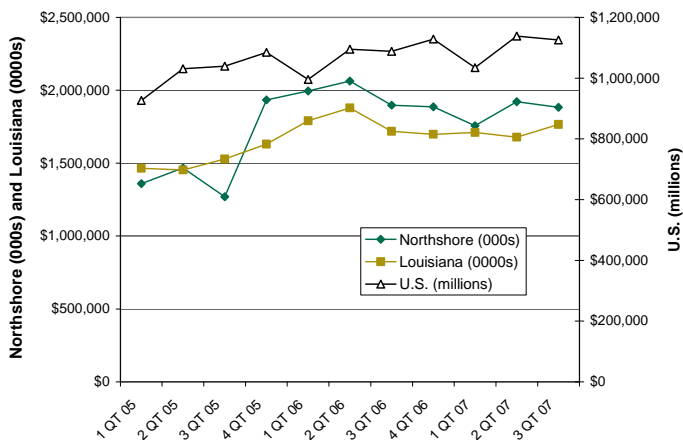
NATIONAL, STATE, & REGIONAL COMPARISON

Quarterly Average Unemployment Rate



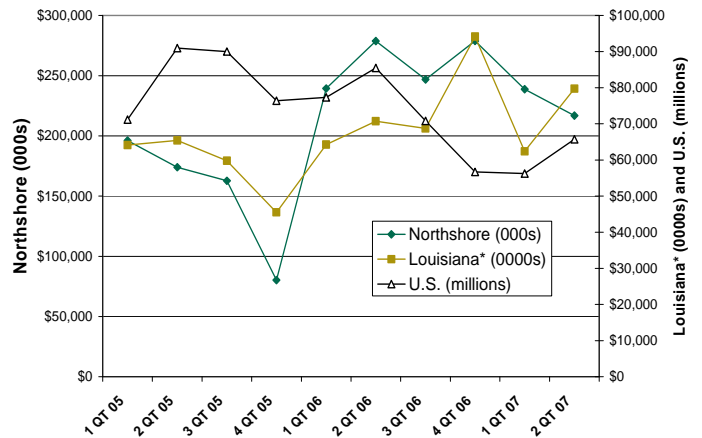
Sources: U.S. = U.S. Department of Labor, Bureau of Labor Statistics
 LA and Northshore = Labor Market Statistics, Local Area Unemployment Statistics Program

Volume of Retail Sales (Not Seasonally Adjusted)



Sources: U.S. = U.S. Census Bureau; Louisiana = Louisiana Department of Revenue;
 Northshore = Livingston Parish School Board Sales and Use Tax Division, St. Helena Parish Sheriff's Office, St. Tammany Parish Sales and Use Tax Department, Tangipahoa Parish School Board Sales and Use Tax Division, Washington Parish Sheriff's Office Sales and Use Tax Department

Value of Residential Building Permits



Sources: U.S. = U.S. Census Bureau; Louisiana = Louisiana Department of Economic Development
 (* Louisiana numbers include only those 45 parishes which report monthly)
 Northshore = Louisiana Department of Economic Development, Livingston Parish Permit Office, Town of Albany, City of Denham Springs, Town of Livingston, Tangipahoa Parish Permit Office, City of Hammond, Town of Independence, City of Ponchatoula, Washington Parish Permit Office, City of Bogalusa, Town of Franklinton

LOCAL

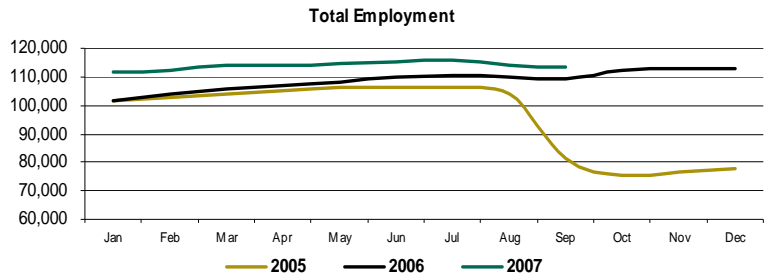
St. Tammany Parish

EMPLOYMENT

ST. TAMMANY PARISH

	Oct 06	Nov 06	Dec 06	Jan 07	Feb 07	Mar 07	Apr 07	May 07	Jun 07	Jul 07	Aug 07	Sep 07
Labor Force	115,738	116,611	116,264	115,210	115,320	117,162	117,112	117,834	119,551	119,642	117,642	117,218
% Change vs Prior Year	25.5%	24.3%	36.9%	7.2%	6.3%	6.4%	5.8%	5.5%	4.5%	4.7%	3.6%	3.5%
Total Employment	112,331	113,113	113,105	111,401	112,319	114,002	114,222	114,375	115,240	115,949	114,144	113,739
% Change vs Prior Year	49.0%	47.7%	45.5%	9.8%	8.3%	7.6%	6.6%	6.0%	5.1%	4.8%	4.1%	3.8%
Number Unemployed	3,407	3,498	3,159	3,809	3,001	3,160	2,890	3,459	4,311	3,693	3,498	3,479
% Change vs Prior Year	-79.8%	-79.7%	-56.2%	-36.2%	-37.9%	-23.6%	-18.2%	-9.3%	-9.8%	0.2%	-8.6%	-3.7%
Unemployment Rate	2.9%	3.0%	2.7%	3.3%	2.6%	2.7%	2.5%	2.9%	3.6%	3.1%	3.0%	3.0%
Change vs Prior Year	-15.3%	-15.3%	-5.8%	-2.3%	-1.9%	-1.1%	-0.7%	-0.5%	-0.6%	-0.1%	-0.4%	-0.2%

	4Q - 06	1Q - 07	2Q - 07	3Q - 07
Labor Force	116,204	115,897	118,166	118,167
% Change vs Prior Year	28.7%	6.6%	5.2%	4.0%
Total Employment	112,850	112,574	114,612	114,611
% Change vs Prior Year	47.4%	8.6%	5.9%	4.2%
Number Unemployed	3,355	3,323	3,553	3,557
% Change vs Prior Year	-75.6%	-33.3%	-12.1%	-4.1%
Unemployment Rate	2.9%	2.9%	3.0%	3.0%
Change vs Prior Year	-12.1%	-1.8%	-0.6%	-0.2%



Source: Labor Market Statistics, Local Area Unemployment Statistics Program

SALES AND USE TAXES

ST. TAMMANY PARISH

	Oct 06	Nov 06	Dec 06	Jan 07*	Feb 07	Mar 07	Apr 07	May 07	Jun 07	Jul 07	Aug 07	Sep 07
Total Sales (Mil.)	\$ 336.10	\$ 372.38	\$ 441.06	\$ 325.79	\$ 308.59	\$ 395.23	\$ 346.23	\$ 355.55	\$ 419.66	\$ 345.77	\$ 346.71	\$ 370.14
% Change vs Prior Year	-18.3%	-5.0%	11.2%	-17.9%	-21.1%	-10.2%	-14.4%	-17.8%	-4.2%	-8.1%	-6.9%	-6.1%
Sales Tax Collected (Mil.)	\$ 16.22	\$ 17.97	\$ 21.28	\$ 15.72	\$ 14.89	\$ 19.07	\$ 16.71	\$ 17.16	\$ 20.25	\$ 16.68	\$ 16.73	\$ 17.86
% Change vs Prior Year	-18.3%	-5.0%	11.2%	-17.9%	-21.1%	-10.2%	-14.4%	-17.8%	-4.2%	-8.1%	-6.9%	-6.1%

* Average tax rate used to calculate estimated total sales changed to 4.825% from January 2007 forward, per advice from Shawn McManus, St. Tammany Sales and Use Tax Director.

Source: St. Tammany Parish Sales and Use Tax Department

RESIDENTIAL BUILDING PERMITS

ST. TAMMANY PARISH

	Oct 06	Nov 06	Dec 06	Jan 07	Feb 07	Mar 07	Apr 07	May 07	Jun 07	Jul 07	Aug 07	Sep 07
Total Units	239	210	223	237	126	196	193	161	140	182	117	70
% Change Last Year	696.7%	296.2%	486.8%	523.7%	-63.6%	-46.9%	-30.1%	-47.0%	-51.6%	-2.2%	-64.8%	-67.7%
Value (\$000s)	50,425	38,864	39,653	81,307	28,412	40,828	54,785	37,262	26,881	47,905	24,154	15,897
% Change Last Year	885.7%	335.1%	430.5%	934.5%	-52.2%	-36.3%	11.2%	-34.1%	-51.0%	41.9%	-43.1%	-58.0%
Unincorp. Units	195	187	197	177	95	147	118	131	125	143	86	52
% Change Last Year	712.5%	750.0%	838.1%	669.6%	-67.8%	-56.1%	-50.0%	-42.5%	-46.8%	-11.7%	-57.8%	-68.5%
Value (\$000s)	43,429	35,719	35,270	46,452	23,749	31,777	42,629	32,929	21,958	41,680	17,827	12,685
% Change Last Year	1134.3%	838.4%	828.8%	895.3%	-52.5%	-44.0%	4.0%	-23.5%	-53.7%	40.8%	-49.3%	-59.0%
Incorp. Units	44	23	26	60	31	49	75	30	15	39	31	18
% Change Last Year	633.3%	-25.8%	52.9%	300.0%	-39.2%	44.1%	87.5%	-60.5%	-72.2%	62.5%	-75.8%	-65.4%
Value (\$000s)	6,996	3,145	4,383	34,855	4,663	9,051	12,156	4,333	4,922	6,224	6,327	3,212
% Change Last Year	338.1%	-38.6%	19.2%	991.7%	-50.5%	23.3%	46.6%	-68.0%	-34.2%	49.6%	-13.2%	-53.7%

Sources: 2006 = Economic Development Information Clearing House; 2007 = U.S. Census Bureau

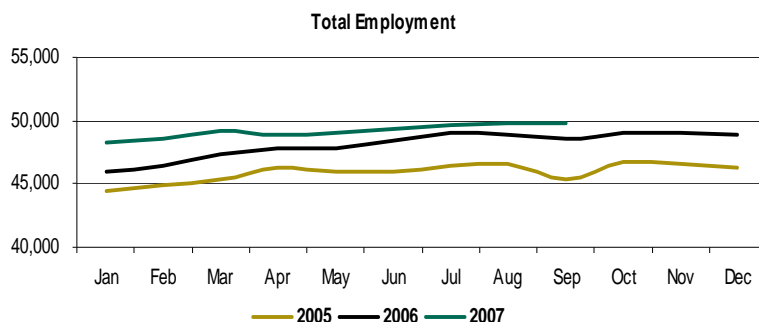
Tangipahoa Parish

EMPLOYMENT

TANGIPAHOA PARISH

	Oct 06	Nov 06	Dec 06	Jan 07	Feb 07	Mar 07	Apr 07	May 07	Jun 07	Jul 07	Aug 07	Sep 07
Labor Force	51,183	51,152	50,891	50,545	50,476	51,015	50,741	51,115	52,009	52,078	52,011	51,979
% Change vs Prior Year	-9.1%	-8.9%	2.1%	3.2%	3.6%	3.1%	2.0%	2.5%	1.7%	1.7%	1.7%	2.2%
Total Employment	49,101	49,036	48,808	48,199	48,633	49,120	48,935	49,063	49,370	49,644	49,749	49,838
% Change vs Prior Year	5.0%	5.2%	5.6%	4.8%	4.8%	3.9%	2.4%	2.7%	2.1%	1.4%	1.8%	2.5%
Number Unemployed	2,082	2,116	2,083	2,346	1,843	1,895	1,806	2,052	2,639	2,434	2,262	2,141
% Change vs Prior Year	-78.1%	-77.9%	-42.3%	-21.4%	-21.3%	-13.8%	-8.0%	-3.9%	-4.6%	7.5%	-1.0%	-3.7%
Unemployment Rate	4.1%	4.1%	4.1%	4.6%	3.7%	3.7%	3.6%	4.0%	5.1%	4.7%	4.3%	4.1%
Change vs Prior Year	-12.8%	-12.9%	-3.1%	-1.5%	-1.1%	-0.7%	-0.3%	-0.3%	-0.3%	0.3%	-0.2%	-0.3%

	4Q - 06	1Q - 07	2Q - 07	3Q - 07
Labor Force	51,075	50,679	51,288	52,023
% Change vs Prior Year	-5.6%	3.3%	2.1%	1.9%
Total Employment	48,982	48,651	49,123	49,744
% Change vs Prior Year	5.2%	4.5%	2.4%	1.9%
Number Unemployed	2,094	2,028	2,166	2,279
% Change vs Prior Year	-72.3%	-19.1%	-5.4%	1.0%
Unemployment Rate	4.1%	4.0%	4.2%	4.4%
Change vs Prior Year	-9.6%	-1.1%	-0.3%	-0.1%



Source: Labor Market Statistics, Local Area Unemployment Statistics Program

SALES AND USE TAXES

TANGIPAHOA PARISH

	Oct 06	Nov 06	Dec 06	Jan 07	Feb 07	Mar 07	Apr 07	May 07	Jun 07	Jul 07	Aug 07	Sep 07
Total Sales (Mil.)	\$ 141.40	\$ 137.10	\$ 124.06	\$ 154.63	\$ 123.32	\$ 119.76	\$ 147.78	\$ 133.13	\$ 147.46	\$ 145.42	\$ 131.03	\$ 136.93
% Change vs Prior Year	0.3%	-4.8%	-13.3%	-12.4%	-4.6%	-17.2%	-5.3%	-4.3%	-3.7%	-5.4%	-3.0%	-3.8%
Sales Tax Collected (Mil.)	\$ 2.83	\$ 2.74	\$ 2.48	\$ 3.09	\$ 2.47	\$ 2.40	\$ 2.96	\$ 2.66	\$ 2.95	\$ 2.91	\$ 2.62	\$ 2.74
% Change vs Prior Year	0.3%	-4.8%	-13.3%	-12.4%	-4.6%	-17.2%	-5.3%	-4.3%	-3.7%	-5.4%	-3.0%	-3.8%

Source: Tangipahoa Parish Council - School Board

RESIDENTIAL BUILDING PERMITS

TANGIPAHOA PARISH

	Oct 06	Nov 06	Dec 06	Jan 07	Feb 07	Mar 07	Apr 07	May 07	Jun 07	Jul 07	Aug 07	Sep 07
Total Units	149	93	425	65	72	105	131	131	80	83	134	65
% Change Last Year	30.7%	12.0%	507.1%	-49.6%	-34.5%	-40.0%	-25.1%	5.6%	-26.6%	-24.5%	-23.4%	-57.5%
Value (\$000s)	16,590	12,738	59,576	10,199	9,618	12,234	18,975	17,062	11,301	12,289	16,871	9,632
% Change Last Year	151.5%	21.1%	472.9%	-45.7%	-36.7%	-51.0%	-25.8%	-19.6%	-34.8%	-27.3%	-34.4%	-50.3%
Unincorp. Units	117	74	368	55	64	85	107	125	71	64	78	51
% Change Last Year	56.0%	25.4%	557.1%	-43.3%	-27.3%	-41.8%	-28.2%	26.3%	-12.3%	-33.3%	-41.4%	-46.3%
Value (\$000s)	13,771	9,704	52,341	8,635	8,194	10,393	11,674	15,063	9,441	9,796	9,987	8,036
% Change Last Year	515.6%	30.5%	556.4%	-34.2%	-33.1%	-46.9%	-46.3%	-4.2%	-22.1%	-32.1%	-50.5%	-43.1%
Incorp. Units	32	19	57	10	8	20	24	6	9	19	56	14
% Change Last Year	-17.9%	-20.8%	307.1%	-68.8%	-63.6%	-31.0%	-7.7%	-76.0%	-67.9%	35.7%	33.3%	-75.9%
Value (\$000s)	2818	3034	7235	1564	1424	1840	7302	1999	1860	2494	6884	1595
% Change Last Year	-35.4%	-1.5%	198.3%	-72.4%	-51.8%	-66.0%	91.3%	-63.7%	-64.3%	0.3%	24.1%	-69.6%

Source: Tangipahoa Parish Permit Office, City of Hammond, Town of Independence, City of Ponchatoula, Village of Tickfaw

Livingston Parish

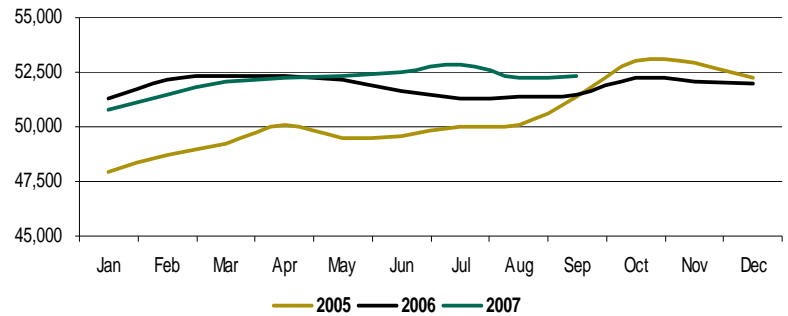
EMPLOYMENT

LIVINGSTON PARISH

	Oct 06	Nov 06	Dec 06	Jan 07	Feb 07	Mar 07	Apr 07	May 07	Jun 07	Jul 07	Aug 07	Sep 07
Labor Force	54,081	54,042	53,828	52,850	53,089	53,783	53,885	54,185	54,877	55,088	54,323	54,281
% Change vs Prior Year	-4.7%	-4.9%	-1.1%	-0.9%	-1.5%	-0.5%	-0.1%	0.4%	1.2%	3.4%	1.6%	1.5%
Total Employment	52,233	52,107	52,004	50,750	51,438	52,108	52,262	52,296	52,500	52,884	52,255	52,301
% Change vs Prior Year	-1.5%	-1.6%	-0.5%	-1.1%	-1.3%	-0.4%	-0.2%	0.3%	1.6%	3.1%	1.8%	1.6%
Number Unemployed	1,848	1,935	1,824	2,100	1,651	1,675	1,623	1,889	2,377	2,204	2,068	1,980
% Change vs Prior Year	-50.3%	-50.1%	-16.3%	4.4%	-7.0%	-1.3%	2.4%	1.1%	-6.4%	9.8%	-1.5%	-1.6%
Unemployment Rate	3.4%	3.6%	3.4%	4.0%	3.1%	3.1%	3.0%	3.5%	4.3%	4.0%	3.8%	3.6%
Change vs Prior Year	-3.2%	-3.2%	-0.6%	0.2%	-0.2%	0.0%	0.1%	0.0%	-0.4%	0.2%	-0.1%	-0.2%

	4Q - 06	1Q - 07	2Q - 07	3Q - 07
Labor Force	53,984	53,241	54,316	54,564
% Change vs Prior Year	-3.6%	-1.0%	0.5%	2.2%
Total Employment	52,115	51,432	52,353	52,480
% Change vs Prior Year	-1.2%	-1.0%	0.6%	2.2%
Number Unemployed	1,869	1,809	1,963	2,084
% Change vs Prior Year	-42.6%	-1.1%	-1.7%	2.2%
Unemployment Rate	3.5%	3.4%	3.6%	3.8%
Change vs Prior Year	-2.3%	0.0%	-0.1%	0.0%

Total Employment



Source: Labor Market Statistics, Local Area Unemployment Statistics Program

SALES AND USE TAXES

LIVINGSTON PARISH

	Oct 06	Nov 06	Dec 06	Jan 07	Feb 07	Mar 07	Apr 07	May 07	Jun 07	Jul 07	Aug 07	Sep 07
Total Sales (Mil.)	\$ 97.01	\$ 97.15	\$ 117.01	\$ 89.16	\$ 93.04	\$ 116.40	\$ 104.01	\$ 116.76	\$ 117.03	\$ 107.14	\$ 107.51	\$ 106.11
% Change vs Prior Year	3.5%	-2.9%	28.9%	-17.8%	5.4%	30.5%	-5.5%	20.1%	10.7%	10.4%	7.0%	0.9%
Sales Tax Collected (Mil.)	\$ 4.85	\$ 4.86	\$ 5.85	\$ 4.51	\$ 4.71	\$ 5.84	\$ 5.23	\$ 5.85	\$ 5.89	\$ 5.44	\$ 5.46	\$ 5.40
% Change vs Prior Year	1.5%	-3.2%	28.0%	-16.9%	6.4%	30.4%	-5.2%	18.8%	10.9%	12.1%	8.6%	2.7%

Source: Livingston Parish Sales Tax Department

RESIDENTIAL BUILDING PERMITS

LIVINGSTON PARISH

	Oct 06	Nov 06	Dec 06	Jan 07	Feb 07	Mar 07	Apr 07	May 07	Jun 07	Jul 07	Aug 07	Sep 07
Total Units	97	101	142	129	141	164	175	213	105	84	63	59
% Change Last Year	3.2%	-5.6%	34.0%	6.6%	30.6%	-29.0%	-7.4%	55.5%	-27.1%	-44.0%	-72.1%	-49.1%
Value (\$000s)	8,329	9,132	13,461	22,778	12,584	14,174	14,314	13,593	9,444	7,606	5,608	6,079
% Change Last Year	6.3%	-0.8%	47.7%	140.8%	27.5%	-28.9%	-8.4%	21.0%	-31.9%	-46.8%	-84.2%	-35.6%
Unincorp. Units	92	99	133	127	138	162	168	211	99	82	61	53
% Change Last Year	4.5%	-4.8%	34.3%	8.5%	29.0%	-27.7%	-8.2%	58.6%	-25.6%	-41.8%	-72.1%	-53.1%
Value (\$000s)	7,777	8,738	12,565	22,408	12,146	13,764	13,313	13,238	8,348	7,181	5,213	4,672
% Change Last Year	8.2%	-1.7%	49.4%	146.9%	25.1%	-27.9%	-10.4%	25.5%	-31.3%	-44.3%	-84.8%	-48.3%
Incorp. Units	5	2	9	2	3	2	7	2	6	2	2	6
% Change Last Year	--	--	--	-50.0%	200.0%	-71.4%	16.7%	-50.0%	-45.5%	-77.8%	-71.4%	100.0%
Value (\$000s)	\$ 551.79	\$ 393.69	\$ 896.20	\$ 369.80	\$ 438.75	\$ 410.00	\$ 1,001.80	\$ 355.00	\$ 1,096.40	\$ 425.00	\$ 395.00	\$ 1,407.22
% Change Last Year	--	--	--	-3.4%	174.2%	-52.5%	31.0%	-48.6%	-35.9%	-70.1%	-64.7%	242.2%

Source: Livingston Parish Building Permit Office, Town of Albany, City of Denham Springs, Town of Livingston

Economic Reporter

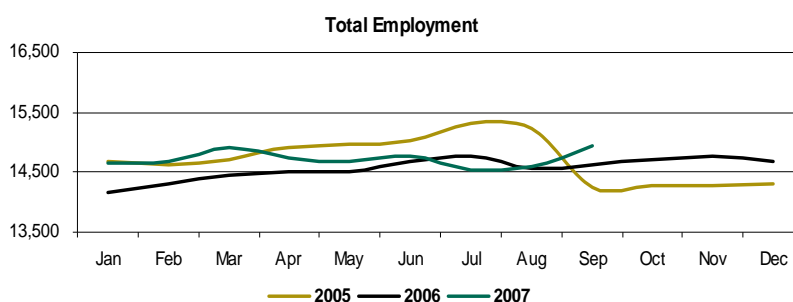
Washington Parish

EMPLOYMENT

WASHINGTON PARISH

	Oct 06	Nov 06	Dec 06	Jan 07	Feb 07	Mar 07	Apr 07	May 07	Jun 07	Jul 07	Aug 07	Sep 07
Labor Force	15,497	15,568	15,396	15,520	15,443	15,668	15,454	15,502	15,795	15,479	15,435	15,747
% Change vs Prior Year	-9.5%	-9.4%	-0.7%	2.3%	2.3%	3.3%	1.8%	1.8%	0.8%	-0.6%	0.2%	1.8%
Total Employment	14,725	14,779	14,672	14,644	14,684	14,915	14,733	14,690	14,760	14,534	14,599	14,935
% Change vs Prior Year	3.0%	3.5%	2.5%	3.5%	2.7%	3.2%	1.5%	1.3%	0.4%	-1.6%	0.1%	2.0%
Number Unemployed	772	789	724	876	759	753	721	812	1,035	945	836	812
% Change vs Prior Year	-72.8%	-72.9%	-38.6%	-14.2%	-3.9%	5.2%	8.9%	11.8%	5.8%	19.6%	0.7%	-1.7%
Unemployment Rate	5.0%	5.1%	4.7%	5.6%	4.9%	4.8%	4.7%	5.2%	6.6%	6.1%	5.4%	5.2%
Change vs Prior Year	-11.6%	-11.8%	-2.9%	-1.1%	-0.3%	0.1%	0.3%	0.4%	0.4%	1.0%	0.0%	-0.1%

	4Q - 06	1Q - 07	2Q - 07	3Q - 07
Labor Force	15,487	15,544	15,584	15,554
% Change vs Prior Year	-6.7%	2.6%	1.4%	0.5%
Total Employment	14,725	14,748	14,728	14,689
% Change vs Prior Year	3.0%	3.1%	1.1%	0.2%
Number Unemployed	762	796	856	864
% Change vs Prior Year	-67.0%	-5.5%	8.5%	6.0%
Unemployment Rate	4.9%	5.1%	5.5%	5.6%
Change vs Prior Year	-8.8%	-0.4%	0.4%	0.3%



Source: Labor Market Statistics, Local Area Unemployment Statistics Program

SALES AND USE TAXES

WASHINGTON PARISH

	Oct 06	Nov 06	Dec 06	Jan 07	Feb 07	Mar 07	Apr 07	May 07	Jun 07	Jul 07	Aug 07*	Sep 07
Total Sales (Mil.)	\$ 40.31	\$ 30.97	\$ 31.55	\$ 40.08	\$ 28.61	\$ 31.54	\$ 41.49	\$ 30.30	\$ 38.15	\$ 34.13	\$ 89.25	\$ 33.44
% Change vs Prior Year	22.0%	-12.1%	-15.9%	-13.9%	-18.5%	-10.2%	4.7%	-21.8%	8.0%	12.4%	170.2%	-5.0%
Sales Tax Collected (Mil.)	\$ 1.85	\$ 1.42	\$ 1.45	\$ 1.85	\$ 1.32	\$ 1.46	\$ 1.92	\$ 1.40	\$ 1.76	\$ 1.58	\$ 4.12	\$ 1.54
% Change vs Prior Year	22.0%	-12.1%	-15.9%	-13.5%	-18.1%	-9.8%	5.2%	-21.5%	8.5%	12.9%	171.3%	-4.6%

* Washington Parish received a one-time payment of approximately \$2 million of use taxes in August 2007, the result of an audit finding covering the previous 3 years.

Source: Washington Parish Sheriff's Office - Sales and Use Tax Department

RESIDENTIAL BUILDING PERMITS

WASHINGTON PARISH

	Oct 06	Nov 06	Dec 06	Jan 07	Feb 07	Mar 07	Apr 07	May 07	Jun 07	Jul 07	Aug 07	Sep 07
Total Units	25	41	188	11	12	14	39	45	38	39	37	32
% Change Last Year	127.3%	86.4%	1466.7%	-57.7%	-60.0%	-44.0%	5.4%	0.0%	0.0%	105.3%	19.4%	33.3%
Value (\$000s)	3,231	4,717	19,677	879	1,698	3,849	3,644	4,401	3,599	6,575	3,470	2,867
% Change Last Year	190.4%	122.3%	1206.1%	-73.2%	-49.4%	20.8%	8.8%	3.7%	-21.6%	228.3%	-1.5%	-14.7%
Unincorp. Units	21	35	180	8	9	8	38	38	37	36	37	29
% Change Last Year	90.9%	66.7%	1700.0%	-60.0%	-65.4%	-63.6%	11.8%	-7.3%	5.7%	111.8%	32.1%	52.6%
Value (\$000s)	2,855	4,020	18,581	678	763	678	3,564	3,564	3,470	6,140	3,470	2,720
% Change Last Year	156.6%	103.8%	1340.4%	-73.1%	-72.8%	-76.5%	25.1%	-9.4%	3.6%	245.3%	7.5%	4.7%
Incorp. Units	4	6	8	3	3	6	1	7	1	3	0	3
% Change Last Year	0.0%	--	--	--	-25.0%	100.0%	-66.7%	75.0%	-66.7%	50.0%	-100.0%	-40.0%
Value (\$000s)	376	697	1096	201	935	3171	80	837	129	436	0	147
% Change Last Year	0.0%	--	--	--	71.6%	956.9%	-84.1%	169.1%	-89.6%	93.7%	-100.0%	-80.8%

Source: Washington Parish Building Permit Office, City of Bogalusa, Town of Franklinton

Economic Reporter

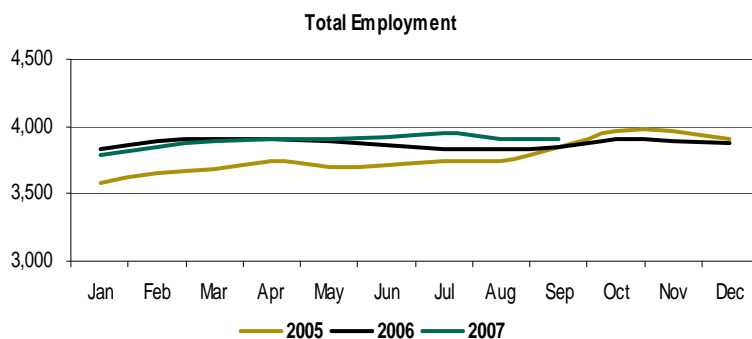
St. Helena Parish

EMPLOYMENT

ST. HELENA PARISH

	Oct 06	Nov 06	Dec 06	Jan 07	Feb 07	Mar 07	Apr 07	May 07	Jun 07	Jul 07	Aug 07	Sep 07
Labor Force	4,122	4,136	4,170	4,113	4,106	4,137	4,144	4,147	4,262	4,323	4,190	4,160
% Change vs Prior Year	-18.8%	-18.7%	-6.2%	-3.0%	-2.5%	-6.9%	-6.4%	-6.5%	-7.2%	-4.2%	-6.0%	-4.7%
Total Employment	3,900	3,891	3,883	3,790	3,841	3,891	3,903	3,905	3,920	3,949	3,902	3,906
% Change vs Prior Year	-1.7%	-1.9%	-0.7%	-1.1%	-1.3%	-0.4%	-0.2%	0.3%	1.6%	3.1%	1.7%	1.6%
Number Unemployed	222	245	287	323	265	246	241	242	342	374	288	254
% Change vs Prior Year	-79.9%	-78.2%	-46.2%	-21.0%	-17.4%	-8.9%	-6.9%	-15.1%	-6.0%	27.2%	-8.9%	-0.4%
Unemployment Rate	5.4%	5.9%	6.9%	7.9%	6.5%	5.9%	5.8%	5.8%	8.0%	8.7%	6.9%	6.1%
Change vs Prior Year	-16.4%	-16.2%	-5.1%	-1.7%	-1.1%	-0.6%	-0.4%	-1.0%	-0.6%	1.6%	-0.7%	-0.1%

	4Q - 06	1Q - 07	2Q - 07	3Q - 07
Labor Force	4,143	4,119	4,184	4,224
% Change vs Prior Year	-14.9%	-2.2%	-0.1%	2.4%
Total Employment	3,891	3,841	3,909	3,919
% Change vs Prior Year	-1.4%	-1.0%	0.6%	2.2%
Number Unemployed	251	278	275	305
% Change vs Prior Year	-72.7%	-16.6%	-9.1%	5.9%
Unemployment Rate	6.1%	6.8%	6.5%	7.2%
Change vs Prior Year	-12.6%	-1.1%	-0.7%	0.3%



Source: Labor Market Statistics, Local Area Unemployment Statistics Program

SALES AND USE TAXES

ST. HELENA PARISH

	Oct 06	Nov 06	Dec 06	Jan 07	Feb 07	Mar 07	Apr 07	May 07	Jun 07	Jul 07	Aug 07	Sep 07
Total Sales (Mil.)	\$ 5.41	\$ 4.50	\$ 4.39	\$ 6.33	\$ 2.51	\$ 5.18	\$ 5.79	\$ 4.87	\$ 4.91	\$ 4.81	\$ 5.69	\$ 5.31
% Change vs Prior Year	29.3%	-4.1%	17.8%	6.5%	-29.0%	19.3%	-7.9%	-3.9%	1.4%	-17.0%	18.1%	11.0%
Sales Tax Collected (Mil.)	\$ 0.27	\$ 0.22	\$ 0.22	\$ 0.32	\$ 0.13	\$ 0.26	\$ 0.29	\$ 0.24	\$ 0.25	\$ 0.24	\$ 0.28	\$ 0.27
% Change vs Prior Year	29.3%	-4.1%	17.8%	6.5%	-29.0%	19.3%	-7.9%	-3.9%	1.4%	-17.0%	18.1%	11.0%

Source: St. Helena Parish Sheriff's Office

RESIDENTIAL BUILDING PERMITS

ST. HELENA PARISH

	Oct 06	Nov 06	Dec 06	Jan 07	Feb 07	Mar 07	Apr 07	May 07	Jun 07	Jul 07	Aug 07	Sep 07
Total Units	5	6	7	1	1	-	4	4	4	4	3	2
% Change Last Year	0.0%	100.0%	600.0%	--	0.0%	0.0%	--	--	--	--	--	-50.0%
Value (\$000s)	560	809	1,095	163	163	-	500	500	500	500	375	250
% Change Last Year	0.0%	241.4%	742.3%	--	0.0%	0.0%	--	--	--	--	--	-43.1%

Source: 2006 - St Helena Parish Police Jury; 2007 - Louisiana Department of Economic Development (estimates with imputation)



Business Research Center
1514 Martens Drive
Hammond, LA 70401

Non-Profit Org.
U.S. Postage
PAID
Bulk Rate
Permit No. 193
Hammond LA



Our Special Thanks
This edition of the *Economic Reporter* would not exist without valuable contributions from:

Southeastern Louisiana University: Dr. A.M.M. Jamal, Dr. John Cresson, Krista H. Marchinko, Rene Abadie

St. Tammany Parish Sales and Use Tax Department

Tangipahoa Parish Permit Office and School Board Sales and Use Tax Department

Livingston Parish Building Permit Office and School Board Sales and Use Tax Division

Washington Parish Building and Planning Department and Sheriff's Office Sales and Use Tax Department

St. Helena Parish Sheriff's Office

and building permit offices of the following municipalities:

**Town of Abita Springs
Village of Albany
City of Bogalusa
City of Covington
City of Denham Springs
Village of Folsom
Town of Franklinton**

**Town of Independence
Town of Livingston
Town of Madisonville
City of Mandeville
Town of Pearl River
City of Ponchatoula
City of Slidell**

This publication is jointly produced by the following Southeastern Louisiana University departments:

- Business Research Center
- Economic & Business Development Center
- Southeast Louisiana Business Center
- College of Business