

Economic Reporter

Promoting Economic Development in Southeast Louisiana

FALL 2007

Vol. 3 · No. 3

NATIONAL

- Employment
- Retail Sales
- Building Permits

STATE

- Employment
- Retail Sales
- Building Permits

REGIONAL

- Employment
- Retail Sales
- Building Permits

NATIONAL, STATE, & REGIONAL COMPARISON

LOCAL

- St. Tammany
- Tangipahoa
- Livingston
- Washington
- St. Helena

CONTACT US

Southeastern Louisiana University
 Business Research Ctr.
 1514 Martens Drive
 Hammond, LA 70401

Phone: (985) 549-3199
 Fax: (985) 549-2127
 brc@selu.edu

NATIONAL

U.S. Economy

EMPLOYMENT

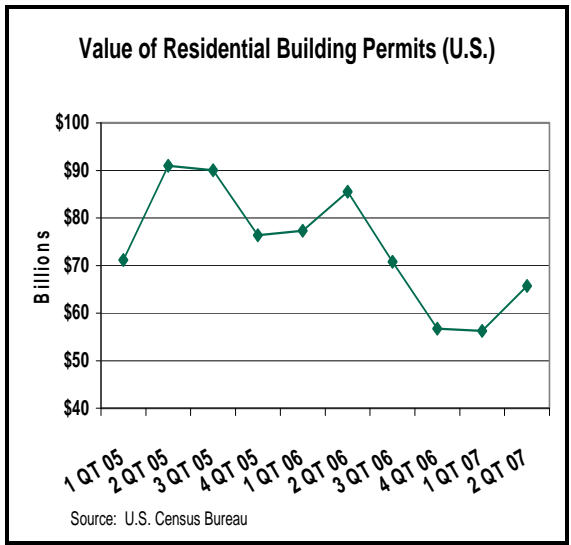
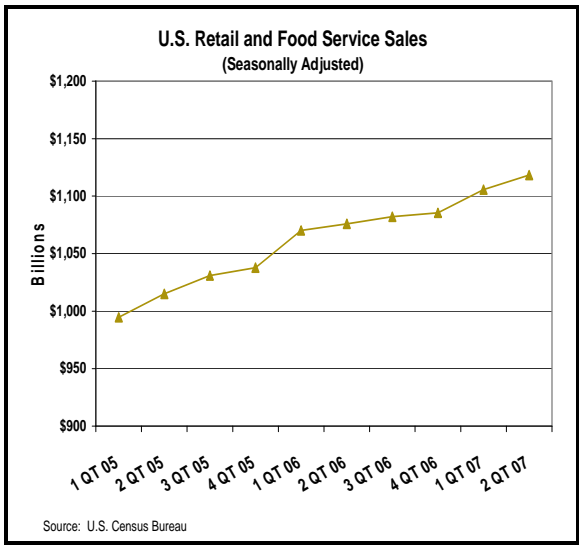
UNITED STATES (Numbers in Thousands)

	Jul 06	Aug 06	Sep 06	Oct 06	Nov 06	Dec 06	Jan 07	Feb 07	Mar 07	Apr 07	May 07	Jun 07
Labor Force	151,558	151,734	151,818	152,052	152,449	152,775	152,958	152,725	152,884	152,542	152,776	153,085
% Change Last Year	1.3%	1.3%	1.1%	1.3%	1.5%	1.7%	1.9%	1.5%	1.5%	1.1%	1.1%	1.1%
Total Employment	144,330	144,618	144,906	145,337	145,623	145,926	145,915	145,888	146,145	145,713	145,913	146,087
% Change Last Year	1.6%	1.5%	1.7%	1.9%	2.1%	2.2%	2.0%	1.8%	1.7%	1.4%	1.3%	1.2%
Total Non-farm	136,172	136,363	136,528	136,601	136,783	136,982	137,108	137,133	137,310	137,356	137,518	137,625
% Change Last Year	1.7%	1.8%	1.9%	1.9%	1.8%	1.9%	1.5%	1.3%	1.2%	1.2%	1.3%	1.3%
Unemployed	7,228	7,116	6,912	6,715	6,826	6,849	7,043	6,837	6,738	6,829	6,863	6,997
% Change Last Year	-3.6%	-3.7%	-9.8%	-9.5%	-9.9%	-7.1%	0.3%	-4.5%	-3.9%	-3.8%	-2.0%	0.2%
Unemployment rate	4.8%	4.7%	4.6%	4.4%	4.5%	4.5%	4.6%	4.5%	4.4%	4.5%	4.5%	4.6%
Change Last Year	-0.2%	-0.2%	-0.5%	-0.5%	-0.5%	-0.4%	-0.1%	-0.3%	-0.3%	-0.2%	-0.1%	0.0%

	3Q - 06	4Q - 06	1Q - 07	2Q - 07
Labor Force	151,703	152,425	152,856	152,801
% Change Last Year	1.2%	1.5%	1.6%	1.1%
Total Employment	144,618	145,629	145,983	145,904
% Change Last Year	1.8%	1.6%	2.4%	0.7%
Total Non-farm	136,354	136,789	137,184	137,500
% Change Last Year	1.8%	1.9%	1.3%	1.2%
Unemployed	7,085	6,797	6,873	6,896
% Change Last Year	-5.7%	-8.8%	-2.7%	-1.9%
Unemployment rate	4.7%	4.5%	4.5%	4.5%
Change Last Year	-0.3%	-0.5%	-0.2%	-0.1%

Total Employment (000s)

Source: Louisiana Department of Labor



STATE

Louisiana Economy

EMPLOYMENT

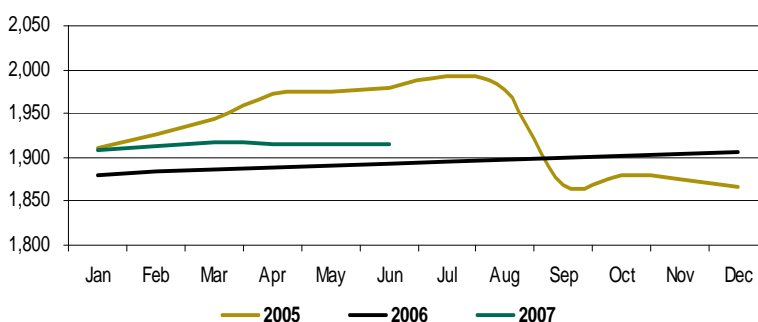
LOUISIANA (Numbers in Thousands)

	Jul 06	Aug 06	Sep 06	Oct 06	Nov 06	Dec 06	Jan 07	Feb 07	Mar 07	Apr 07	May 07	Jun 07
Labor Force	1,957	1,969	1,977	1,984	1,986	1,988	1,985	1,988	1,995	1,996	1,997	1,989
% Change vs Prior Year	-7.2%	-5.5%	-5.8%	-5.6%	-5.7%	0.3%	0.9%	1.0%	1.5%	1.6%	1.6%	1.3%
Total Employment	1,896	1,896	1,899	1,901	1,903	1,907	1,909	1,912	1,917	1,915	1,915	1,916
% Change vs Prior Year	-4.8%	-4.1%	1.7%	1.2%	1.5%	2.2%	1.6%	1.5%	1.6%	1.5%	1.3%	1.2%
Total Nonfarm Emp.	1,848	1,861	1,875	1,879	1,884	1,894	1,896	1,905	1,910	1,907	1,911	1,916
% Change vs Prior Year	-4.7%	-4.1%	2.8%	5.8%	4.6%	4.2%	4.8%	4.5%	4.1%	3.9%	3.6%	3.6%
Number Unemployed	62	72	78	83	83	81	76	76	79	81	82	73
% Change vs Prior Year	-47.1%	-32.4%	-66.1%	-62.6%	-64.0%	-29.6%	-14.3%	-8.7%	-1.3%	6.5%	8.2%	4.4%
Unemployment Rate	3.2%	3.7%	4.0%	4.2%	4.2%	4.1%	3.8%	3.8%	3.9%	4.0%	4.1%	3.7%
Change vs Prior Year	-2.3%	-1.4%	-7.0%	-6.4%	-6.7%	-1.7%	-0.7%	-0.4%	-0.2%	0.1%	0.3%	0.1%

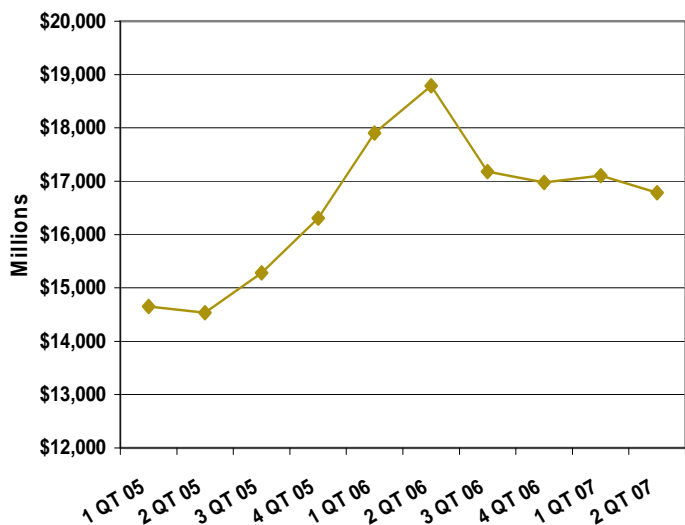
	3Q - 06	4Q - 06	1Q - 07	2Q - 07
Labor Force	1,968	1,986	1,989	1,994
% Change vs Prior Year	-6.2%	-3.7%	1.1%	1.5%
Total Employment	1,897	1,904	1,912	1,915
% Change vs Prior Year	-2.5%	1.6%	1.5%	1.3%
Total Nonfarm Emp.	1,861	1,886	1,904	1,911
% Change vs Prior Year	-2.1%	4.8%	4.5%	3.7%
Number Unemployed	71	82	77	79
% Change vs Prior Year	-53.2%	-56.5%	-8.3%	6.4%
Unemployment Rate	3.6%	4.2%	3.8%	3.9%
Change vs Prior Year	-3.6%	-4.9%	-0.4%	0.2%

Source: Louisiana Department of Labor, Labor Market Statistics

Total Employment (000s)

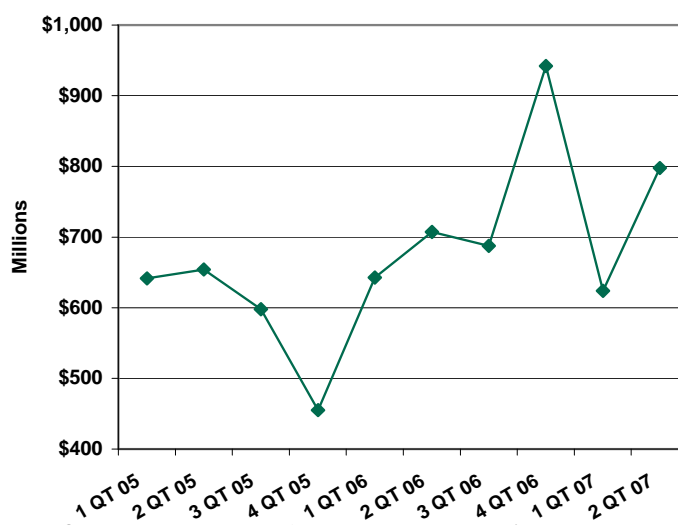


Taxable Retail Sales (Louisiana)



Source: Louisiana Department of Revenue

Value of Residential Building Permits (Louisiana)



Source: LA Department of Economic Development (includes only those 45 parishes which report monthly)

REGIONAL

Northshore Economy

EMPLOYMENT

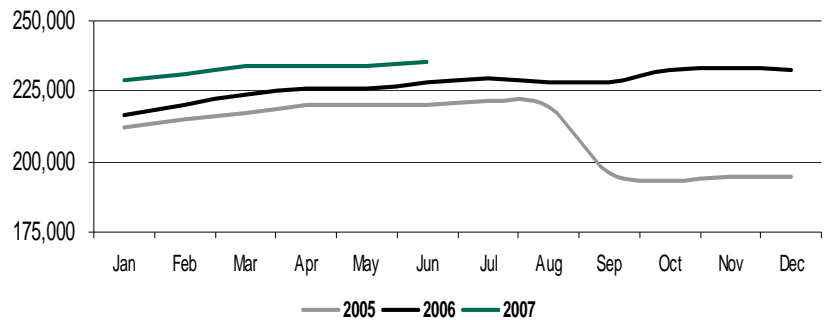
NORTHSHORE REGION

	Jul 06	Aug 06	Sep 06	Oct 06	Nov 06	Dec 06	Jan 07	Feb 07	Mar 07	Apr 07	May 07	Jun 07
Labor Force	238,465	237,685	237,109	240,621	241,509	240,549	238,238	238,434	241,519	241,095	242,541	246,152
% Change vs Prior Year	1.9%	3.0%	1.3%	5.8%	5.4%	15.0%	4.0%	3.5%	3.7%	3.2%	3.2%	2.7%
Total Employment	229,424	228,327	228,180	232,290	232,926	232,472	228,784	230,915	234,036	234,055	234,329	235,790
% Change vs Prior Year	3.4%	3.9%	16.3%	20.1%	19.8%	19.6%	5.5%	4.8%	4.5%	3.7%	3.6%	3.3%
Number Unemployed	9,041	9,358	8,929	8,331	8,583	8,077	9,454	7,519	7,729	7,281	8,454	10,704
% Change vs Prior Year	-25.7%	-15.3%	-76.4%	-75.5%	-75.3%	-45.1%	-23.7%	-25.3%	-14.3%	-9.0%	-4.2%	-6.3%
Unemployment Rate	3.8%	3.9%	3.8%	3.5%	3.6%	3.4%	4.0%	3.2%	3.2%	3.0%	3.5%	4.3%
Change vs Prior Year	-1.4%	-0.9%	-12.4%	-11.5%	-11.6%	-3.7%	-1.4%	-1.2%	-0.7%	-0.4%	-0.3%	-0.4%

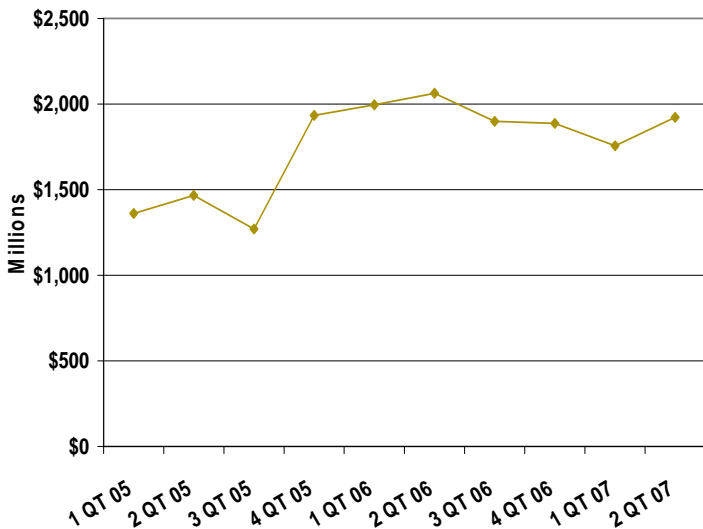
	3Q - 06	4Q - 06	1Q - 07	2Q - 07
Labor Force	237,753	240,893	239,397	243,263
% Change vs Prior Year	2.1%	8.6%	3.7%	3.0%
Total Employment	228,644	232,563	231,245	234,725
% Change vs Prior Year	7.5%	19.8%	4.9%	3.5%
Number Unemployed	9,109	8,330	8,234	8,813
% Change vs Prior Year	-55.3%	-70.0%	-21.5%	-6.4%
Unemployment Rate	3.8%	3.5%	3.4%	3.6%
Change vs Prior Year	-4.9%	-8.9%	-1.1%	-0.4%

Source: Labor Market Statistics, Local Area Unemployment Statistics Program

Total Employment

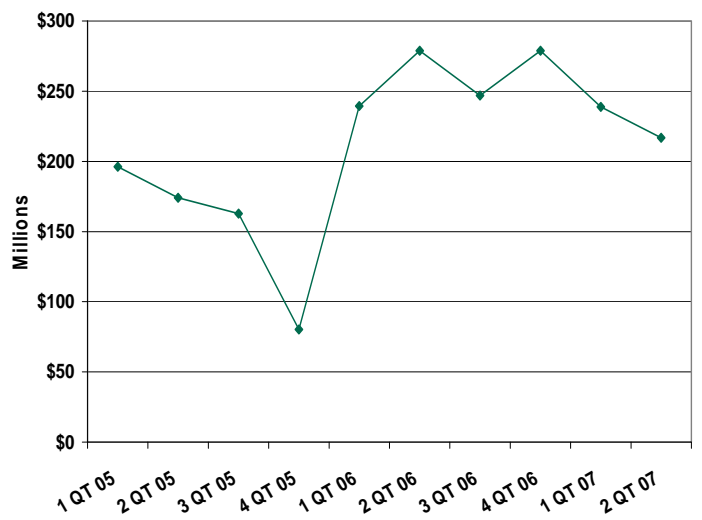


Taxable Retail Sales
(Northshore Region)



Sources: Livingston Parish School Board Sales and Use Tax Division, St. Helena Parish Sheriff's Office, St. Tammany Parish Sales and Use Tax Department, Tangipahoa Parish School Board Sales and Use Tax Division, Washington Parish Sheriff's Office Sales and Use Tax Department

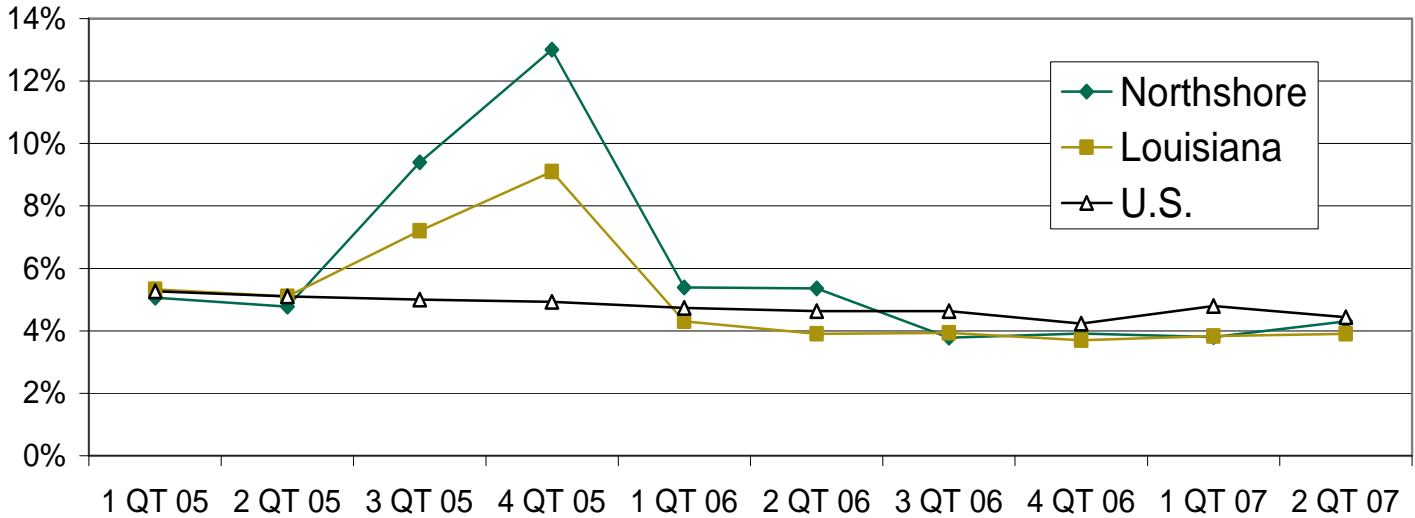
Value of Residential Building Permits
(Northshore Region)



Sources: Louisiana Department of Economic Development, Livingston Parish Permit Office, Town of Albany, City of Denham Springs, Town of Livingston, Tangipahoa Parish Permit Office, City of Hammond, Town of Independence, City of Ponchatoula, Washington Parish Permit Office, City of Bogalusa, Town of Franklinton

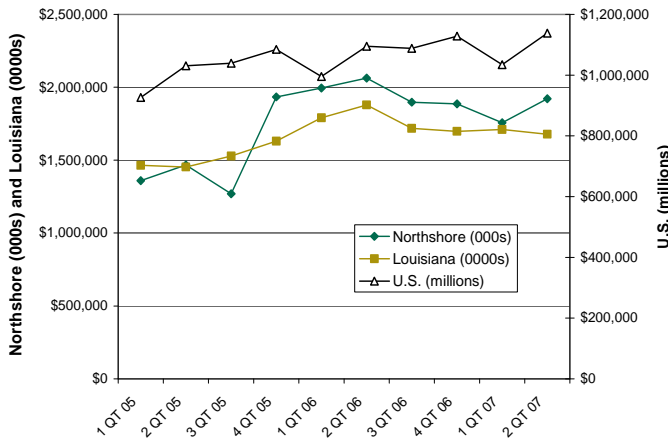
NATIONAL, STATE, & REGIONAL COMPARISON

Quarterly Average Unemployment Rate



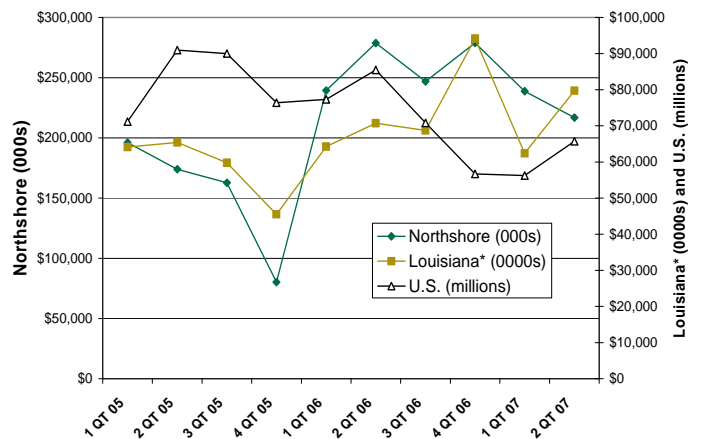
Sources: U.S. = U.S. Department of Labor, Bureau of Labor Statistics
 LA and Northshore = Labor Market Statistics, Local Area Unemployment Statistics Program

Volume of Retail Sales (Not Seasonally Adjusted)



Sources: U.S. = U.S. Census Bureau; Louisiana = Louisiana Department of Revenue;
 Northshore = Livingston Parish School Board Sales and Use Tax Division, St. Helena Parish Sheriff's Office, St. Tammany Parish Sales and Use Tax Department, Tangipahoa Parish School Board Sales and Use Tax Division, Washington Parish Sheriff's Office Sales and Use Tax Department

Value of Residential Building Permits



Sources: U.S. = U.S. Census Bureau; Louisiana = Louisiana Department of Economic Development
 (* Louisiana numbers include only those 45 parishes which report monthly)
 Northshore = Louisiana Department of Economic Development, Livingston Parish Permit Office, Town of Albany, City of Denham Springs, Town of Livingston, Tangipahoa Parish Permit Office, City of Hammond, Town of Independence, City of Ponchatoula, Washington Parish Permit Office, City of Bogalusa, Town of Franklinton

LOCAL

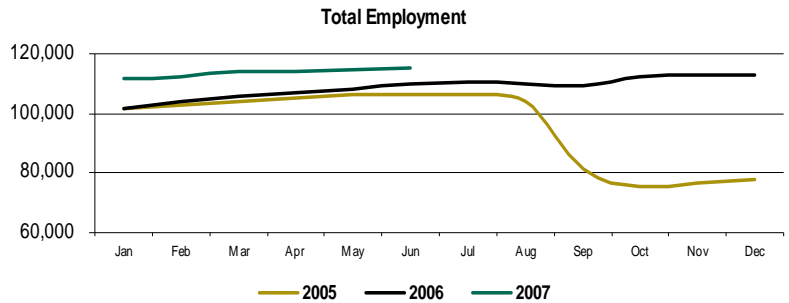
St. Tammany Parish

EMPLOYMENT

ST. TAMMANY PARISH

	Jul 06	Aug 06	Sep 06	Oct 06	Nov 06	Dec 06	Jan 07	Feb 07	Mar 07	Apr 07	May 07	Jun 07
Labor Force	114,272	113,528	113,203	115,738	116,611	116,264	115,210	115,320	117,162	117,112	117,834	119,551
% Change vs Prior Year	2.8%	4.7%	13.7%	25.5%	24.3%	36.9%	7.2%	6.3%	6.4%	5.8%	5.5%	4.5%
Total Employment	110,587	109,699	109,591	112,331	113,113	113,105	111,401	112,319	114,002	114,222	114,375	115,240
% Change vs Prior Year	4.0%	5.3%	34.8%	49.0%	47.7%	45.5%	9.8%	8.3%	7.6%	6.6%	6.0%	5.1%
Number Unemployed	3,685	3,829	3,612	3,407	3,498	3,159	3,809	3,001	3,160	2,890	3,459	4,311
% Change vs Prior Year	-22.5%	-10.4%	-80.2%	-79.8%	-79.7%	-56.2%	-36.2%	-37.9%	-23.6%	-18.2%	-9.3%	-9.8%
Unemployment Rate	3.2%	3.4%	3.2%	2.9%	3.0%	2.7%	3.3%	2.6%	2.7%	2.5%	2.9%	3.6%
Change vs Prior Year	-1.1%	-0.5%	-15.1%	-15.3%	-15.3%	-5.8%	-2.3%	-1.9%	-1.1%	-0.7%	-0.5%	-0.6%

	3Q - 06	4Q - 06	1Q - 07	2Q - 07
Labor Force	113,668	116,204	115,897	118,166
% Change vs Prior Year	6.9%	28.7%	6.6%	5.2%
Total Employment	109,959	112,850	112,574	114,612
% Change vs Prior Year	13.0%	47.4%	8.6%	5.9%
Number Unemployed	3,709	3,355	3,323	3,553
% Change vs Prior Year	-59.2%	-75.6%	-33.3%	-12.1%
Unemployment Rate	3.3%	2.9%	2.9%	3.0%
Change vs Prior Year	-5.6%	-12.1%	-1.8%	-0.6%



Source: Labor Market Statistics, Local Area Unemployment Statistics Program

SALES AND USE TAXES

ST. TAMMANY PARISH

	Jul 06	Aug 06	Sep 06	Oct 06	Nov 06	Dec 06	Jan 07*	Feb 07	Mar 07	Apr 07	May 07	Jun 07
Total Sales (Mil.)	\$ 376.39	\$ 372.21	\$ 394.25	\$ 336.10	\$ 372.38	\$ 441.06	\$ 325.79	\$ 308.59	\$ 395.23	\$ 346.23	\$ 355.55	\$ 419.66
% Change vs Prior Year	41.1%	117.7%	39.8%	-18.3%	-5.0%	11.2%	-17.9%	-21.1%	-10.2%	-14.4%	-17.8%	-4.2%
Sales Tax Collected (Mil.)	\$ 18.16	\$ 17.96	\$ 19.02	\$ 16.22	\$ 17.97	\$ 21.28	\$ 15.72	\$ 14.89	\$ 19.07	\$ 16.71	\$ 17.16	\$ 20.25
% Change vs Prior Year	41.1%	117.7%	39.8%	-18.3%	-5.0%	11.2%	-17.9%	-21.1%	-10.2%	-14.4%	-17.8%	-4.2%

* Average tax rate used to calculate estimated total sales changed to 4.825% from January 2007 forward, per advice from Shawn McManus, St. Tammany Sales and Use Tax Director.

Source: St. Tammany Parish Sales and Use Tax Department

RESIDENTIAL BUILDING PERMITS

ST. TAMMANY PARISH

	Jul 06	Aug 06	Sep 06	Oct 06	Nov 06	Dec 06	Jan 07	Feb 07	Mar 07	Apr 07	May 07	Jun 07
Total Units	186	332	217	239	210	223	237	126	196	193	161	140
% Change Last Year	-18.4%	-12.4%	843.5%	696.7%	296.2%	486.8%	523.7%	-63.6%	-46.9%	-30.1%	-47.0%	-51.6%
Value (\$000s)	33,759	42,427	37,888	50,425	38,864	39,653	81,307	28,412	40,828	54,785	37,262	26,881
% Change Last Year	-14.0%	-30.4%	1540.9%	885.7%	335.1%	430.5%	934.5%	-52.2%	-36.3%	11.2%	-34.1%	-51.0%
Unincorp. Units	162	204	165	195	187	197	177	95	147	118	131	125
% Change Last Year	-21.7%	-42.4%	768.4%	712.5%	750.0%	838.1%	669.6%	-67.8%	-56.1%	-50.0%	-42.5%	-46.8%
Value (\$000s)	29,597	35,141	30,947	43,429	35,719	35,270	46,452	23,749	31,777	42,629	32,929	21,958
% Change Last Year	-15.4%	-35.9%	2464.0%	1134.3%	838.4%	828.8%	895.3%	-52.5%	-44.0%	4.0%	-23.5%	-53.7%
Incorp. Units	24	128	52	44	23	26	60	31	49	75	30	15
% Change Last Year	14.3%	412.0%	1200.0%	633.3%	-25.8%	52.9%	300.0%	-39.2%	44.1%	87.5%	-60.5%	-72.2%
Value (\$000s)	4,162	7,286	6,940	6,996	3,145	4,383	34,855	4,663	9,051	12,156	4,333	4,922
% Change Last Year	-2.1%	18.0%	529.8%	338.1%	-38.6%	19.2%	991.7%	-50.5%	23.3%	46.6%	-68.0%	-34.2%

Sources: 2006 = Economic Development Information Clearing House; 2007 = <http://censtats.census.gov/>

Economic Reporter

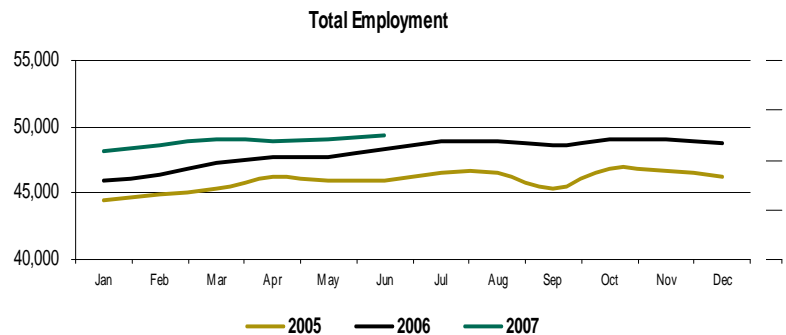
Tangipahoa Parish

EMPLOYMENT

TANGIPAHOA PARISH

	Jul 06	Aug 06	Sep 06	Oct 06	Nov 06	Dec 06	Jan 07	Feb 07	Mar 07	Apr 07	May 07	Jun 07
Labor Force	51,220	51,145	50,842	51,183	51,152	50,891	50,545	50,476	51,015	50,741	51,115	52,009
% Change vs Prior Year	3.7%	3.8%	-9.4%	-9.1%	-8.9%	2.1%	3.2%	3.6%	3.1%	2.0%	2.5%	1.7%
Total Employment	48,956	48,861	48,619	49,101	49,036	48,808	48,199	48,633	49,120	48,935	49,063	49,370
% Change vs Prior Year	5.4%	5.0%	7.1%	5.0%	5.2%	5.6%	4.8%	4.8%	3.9%	2.4%	2.7%	2.1%
Number Unemployed	2,264	2,284	2,223	2,082	2,116	2,083	2,346	1,843	1,895	1,806	2,052	2,639
% Change vs Prior Year	-23.2%	-16.7%	-79.4%	-78.1%	-77.9%	-42.3%	-21.4%	-21.3%	-13.8%	-8.0%	-3.9%	-4.6%
Unemployment Rate	4.4%	4.5%	4.4%	4.1%	4.1%	4.1%	4.6%	3.7%	3.7%	3.6%	4.0%	5.1%
Change vs Prior Year	-1.6%	-1.1%	-14.8%	-12.8%	-12.9%	-3.1%	-1.5%	-1.1%	-0.7%	-0.3%	-0.3%	-0.3%

	3Q - 06	4Q - 06	1Q - 07	2Q - 07
Labor Force	51,069	51,075	50,679	51,288
% Change vs Prior Year	-1.0%	-5.6%	3.3%	2.1%
Total Employment	48,812	48,982	48,651	49,123
% Change vs Prior Year	5.8%	5.2%	4.5%	2.4%
Number Unemployed	2,257	2,094	2,028	2,166
% Change vs Prior Year	-58.9%	-72.3%	-19.1%	-5.4%
Unemployment Rate	4.4%	4.1%	4.0%	4.2%
Change vs Prior Year	-5.8%	-9.6%	-1.1%	-0.3%



Source: Labor Market Statistics, Local Area Unemployment Statistics Program

SALES AND USE TAXES

TANGIPAHOA PARISH

	Jul 06	Aug 06	Sep 06	Oct 06	Nov 06	Dec 06	Jan 07	Feb 07	Mar 07	Apr 07	May 07	Jun 07
Total Sales (Mil.)	\$ 153.72	\$ 135.04	\$ 142.36	\$ 141.40	\$ 137.10	\$ 124.06	\$ 154.63	\$ 123.32	\$ 119.76	\$ 147.78	\$ 133.13	\$ 147.46
% Change vs Prior Year	39.0%	36.6%	90.6%	0.3%	-4.8%	-13.3%	-12.4%	-4.6%	-17.2%	-5.3%	-4.3%	-3.7%
Sales Tax Collected (Mil.)	\$ 3.07	\$ 2.70	\$ 2.85	\$ 2.83	\$ 2.74	\$ 2.48	\$ 3.09	\$ 2.47	\$ 2.40	\$ 2.96	\$ 2.66	\$ 2.95
% Change vs Prior Year	39.0%	36.6%	90.6%	0.3%	-4.8%	-13.3%	-12.4%	-4.6%	-17.2%	-5.3%	-4.3%	-3.7%

Source: Tangipahoa Parish Council - School Board

RESIDENTIAL BUILDING PERMITS

TANGIPAHOA PARISH

	Jul 06	Aug 06	Sep 06	Oct 06	Nov 06	Dec 06	Jan 07	Feb 07	Mar 07	Apr 07	May 07	Jun 07
Total Units	110	175	153	149	93	425	65	72	105	131	131	80
% Change Last Year	31.0%	153.6%	10.1%	30.7%	12.0%	507.1%	-49.6%	-34.5%	-40.0%	-25.1%	5.6%	-26.6%
Value (\$000s)	16,908	25,701	19,360	16,590	12,738	59,576	10,199	9,618	12,234	18,975	17,062	11,301
% Change Last Year	99.6%	193.2%	41.9%	151.5%	21.1%	472.9%	-45.7%	-36.7%	-51.0%	-25.8%	-19.6%	-34.8%
Unincorp. Units	96	133	95	117	74	368	55	64	85	107	125	71
% Change Last Year	37.1%	121.7%	-6.9%	56.0%	25.4%	557.1%	-43.3%	-27.3%	-41.8%	-28.2%	26.3%	-12.3%
Value (\$000s)	14,421	20,155	14,111	13,771	9,704	52,341	8,635	8,194	10,393	11,674	15,063	9,441
% Change Last Year	128.4%	157.8%	51.8%	515.6%	30.5%	556.4%	-34.2%	-33.1%	-46.9%	-46.3%	-4.2%	-22.1%
Incorp. Units	14	42	58	32	19	57	10	8	20	24	6	9
% Change Last Year	0.0%	366.7%	56.8%	-17.9%	-20.8%	307.1%	-68.8%	-63.6%	-31.0%	-7.7%	-76.0%	-67.9%
Value (\$000s)	2,487	5,545	5,249	2,818	3,034	7,235	1,564	1,424	1,840	7,302	1,999	1,860
% Change Last Year	15.4%	484.5%	20.6%	-35.4%	-1.5%	198.3%	-72.4%	-51.8%	-66.0%	91.3%	-63.7%	-64.3%

Sources: Tangipahoa Parish Permit Office, City of Hammond, Town of Independence, City of Ponchartroula, Village of Tickfaw

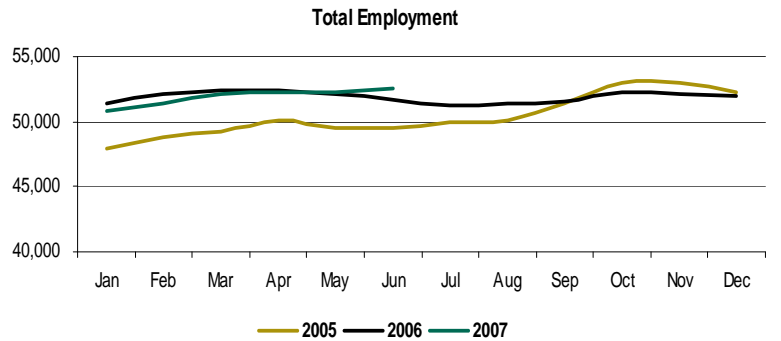
Livingston Parish

EMPLOYMENT

LIVINGSTON PARISH

	Jul 06	Aug 06	Sep 06	Oct 06	Nov 06	Dec 06	Jan 07	Feb 07	Mar 07	Apr 07	May 07	Jun 07
Labor Force	53,285	53,450	53,501	54,081	54,042	53,828	52,850	53,089	53,783	53,885	54,185	54,877
% Change vs Prior Year	0.7%	1.4%	-4.0%	-4.7%	-4.9%	-1.1%	-0.9%	-1.5%	-0.5%	-0.1%	0.4%	1.2%
Total Employment	51,277	51,351	51,488	52,233	52,107	52,004	50,750	51,438	52,108	52,262	52,296	52,500
% Change vs Prior Year	2.5%	2.5%	0.2%	-1.5%	-1.6%	-0.5%	-1.1%	-1.3%	-0.4%	-0.2%	0.3%	1.6%
Number Unemployed	2,008	2,099	2,013	1,848	1,935	1,824	2,100	1,651	1,675	1,623	1,889	2,377
% Change vs Prior Year	-30.4%	-19.8%	-53.8%	-50.3%	-50.1%	-16.3%	4.4%	-7.0%	-1.3%	2.4%	1.1%	-6.4%
Unemployment Rate	3.8%	3.9%	3.8%	3.4%	3.6%	3.4%	4.0%	3.1%	3.1%	3.0%	3.5%	4.3%
Change vs Prior Year	-1.7%	-1.1%	-4.0%	-3.2%	-3.2%	-0.6%	0.2%	-0.2%	0.0%	0.1%	0.0%	-0.4%

	3Q - 06	4Q - 06	1Q - 07	2Q - 07
Labor Force	53,412	53,984	53,241	54,316
% Change vs Prior Year	-0.7%	-3.6%	-1.0%	0.5%
Total Employment	51,372	52,115	51,432	52,353
% Change vs Prior Year	1.7%	-1.2%	-1.0%	0.6%
Number Unemployed	2,040	1,869	1,809	1,963
% Change vs Prior Year	-37.9%	-42.6%	-1.1%	-1.7%
Unemployment Rate	3.8%	3.5%	3.4%	3.6%
Change vs Prior Year	-2.3%	-2.3%	0.0%	-0.1%



Source: Labor Market Statistics, Local Area Unemployment Statistics Program

SALES AND USE TAXES

LIVINGSTON PARISH

	Jul 06	Aug 06	Sep 06	Oct 06	Nov 06	Dec 06	Jan 07	Feb 07	Mar 07	Apr 07	May 07	Jun 07
Total Sales (Mil.)	\$ 97.03	\$ 100.50	\$ 105.15	\$ 97.01	\$ 97.15	\$ 117.01	\$ 89.16	\$ 93.04	\$ 116.40	\$ 104.01	\$ 116.76	\$ 117.03
% Change vs Prior Year	16.1%	29.8%	39.6%	3.5%	-2.9%	28.9%	-17.8%	5.4%	30.5%	-5.5%	20.1%	10.7%
Sales Tax Collected (Mil.)	\$ 4.85	\$ 5.03	\$ 5.26	\$ 4.85	\$ 4.86	\$ 5.85	\$ 4.51	\$ 4.71	\$ 5.84	\$ 5.23	\$ 5.85	\$ 5.89
% Change vs Prior Year	15.8%	28.9%	38.7%	1.5%	-3.2%	28.0%	-16.9%	6.4%	30.4%	-5.2%	18.8%	10.9%

Source: Livingston Parish School Board - Sales Tax Division

RESIDENTIAL BUILDING PERMITS

LIVINGSTON PARISH

	Jul 06	Aug 06	Sep 06	Oct 06	Nov 06	Dec 06	Jan 07	Feb 07	Mar 07	Apr 07	May 07	Jun 07
Total Units	150	226	116	97	101	142	129	141	164	175	213	105
% Change Last Year	87.5%	98.2%	-12.8%	3.2%	-5.6%	34.0%	6.6%	30.6%	-29.0%	-7.4%	55.5%	-27.1%
Value (\$000s)	14,307	35,512	9,447	8,329	9,132	13,461	22,778	12,584	14,174	14,314	13,593	9,444
% Change Last Year	112.0%	289.4%	-13.1%	6.3%	-0.8%	47.7%	140.8%	27.5%	-28.9%	-8.4%	21.0%	-31.9%
Unicorp. Units	141	219	113	92	99	133	127	138	162	168	211	99
% Change Last Year	76.3%	92.1%	-15.0%	4.5%	-4.8%	34.3%	8.5%	29.0%	-27.7%	-8.2%	58.6%	-25.6%
Value (\$000s)	12,883	34,394	9,036	7,777	8,738	12,565	22,408	12,146	13,764	13,313	13,238	8,348
% Change Last Year	90.9%	277.2%	-16.9%	8.2%	-1.7%	49.4%	146.9%	25.1%	-27.9%	-10.4%	25.5%	-31.3%
Incorp. Units	9	7	3	5	2	9	2	3	2	7	2	6
% Change Last Year	0.0%	0.0%	0.0%	--	--	--	-50.0%	200.0%	-71.4%	16.7%	-50.0%	-45.5%
Value (\$000s)	\$ 1,423.50	\$ 1,118.19	\$ 411.19	\$ 551.79	\$ 393.69	\$ 896.20	\$ 369.80	\$ 438.75	\$ 410.00	\$ 1,001.80	\$ 355.00	\$ 1,096.40
% Change Last Year	0.0%	0.0%	0.0%	--	--	--	-3.4%	174.2%	-52.5%	31.0%	-48.6%	-35.9%

Sources: Livingston Parish Permit Office, Town of Albany, City of Denham Springs, Town of Livingston

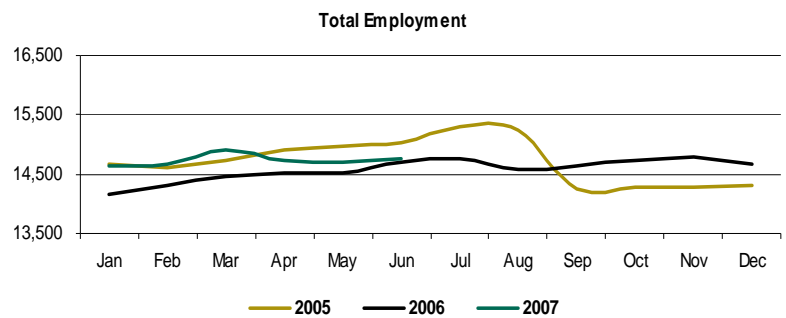
Washington Parish

EMPLOYMENT

WASHINGTON PARISH

	Jul 06	Aug 06	Sep 06	Oct 06	Nov 06	Dec 06	Jan 07	Feb 07	Mar 07	Apr 07	May 07	Jun 07
Labor Force	15,565	15,411	15,463	15,497	15,568	15,396	15,520	15,443	15,668	15,454	15,502	15,795
% Change vs Prior Year	-5.4%	-5.3%	-11.5%	-9.5%	-9.4%	-0.7%	2.3%	2.3%	3.3%	1.8%	1.8%	0.8%
Total Employment	14,775	14,581	14,637	14,725	14,779	14,672	14,644	14,684	14,915	14,733	14,690	14,760
% Change vs Prior Year	-3.5%	-4.3%	2.7%	3.0%	3.5%	2.5%	3.5%	2.7%	3.2%	1.5%	1.3%	0.4%
Number Unemployed	790	830	826	772	789	724	876	759	753	721	812	1,035
% Change vs Prior Year	-31.1%	-20.4%	-74.4%	-72.8%	-72.9%	-38.6%	-14.2%	-3.9%	5.2%	8.9%	11.8%	5.8%
Unemployment Rate	5.1%	5.4%	5.3%	5.0%	5.1%	4.7%	5.6%	4.9%	4.8%	4.7%	5.2%	6.6%
Change vs Prior Year	-1.9%	-1.0%	-13.2%	-11.6%	-11.8%	-2.9%	-1.1%	-0.3%	0.1%	0.3%	0.4%	0.4%

	3Q - 06	4Q - 06	1Q - 07	2Q - 07
Labor Force	15,480	15,487	15,544	15,584
% Change vs Prior Year	-7.5%	-6.7%	2.6%	1.4%
Total Employment	14,664	14,725	14,748	14,728
% Change vs Prior Year	-1.8%	3.0%	3.1%	1.1%
Number Unemployed	815	762	796	856
% Change vs Prior Year	-54.9%	-67.0%	-5.5%	8.5%
Unemployment Rate	5.3%	4.9%	5.1%	5.5%
Change vs Prior Year	-5.4%	-8.8%	-0.4%	0.4%



Source: Labor Market Statistics, Local Area Unemployment Statistics Program

SALES AND USE TAXES

WASHINGTON PARISH

	Jul 06	Aug 06	Sep 06	Oct 06	Nov 06	Dec 06	Jan 07	Feb 07	Mar 07	Apr 07	May 07	Jun 07
Total Sales (Mil.)	\$ 30.35	\$ 33.03	\$ 35.22	\$ 40.31	\$ 30.97	\$ 31.55	\$ 40.08	\$ 28.61	\$ 31.54	\$ 41.49	\$ 30.30	\$ 38.15
% Change vs Prior Year	-7.6%	27.1%	88.9%	22.0%	-12.1%	-15.9%	-13.9%	-18.5%	-10.2%	4.7%	-21.8%	8.0%
Sales Tax Collected (Mil.)	\$ 1.40	\$ 1.52	\$ 1.62	\$ 1.85	\$ 1.42	\$ 1.45	\$ 1.85	\$ 1.32	\$ 1.46	\$ 1.92	\$ 1.40	\$ 1.76
% Change vs Prior Year	-7.6%	27.1%	88.9%	22.0%	-12.1%	-15.9%	-13.5%	-18.1%	-9.8%	5.2%	-21.5%	8.5%

Source: Washington Parish Sheriff's Office - Sales and Use Tax Department

RESIDENTIAL BUILDING PERMITS

WASHINGTON PARISH

	Jul 06	Aug 06	Sep 06	Oct 06	Nov 06	Dec 06	Jan 07	Feb 07	Mar 07	Apr 07	May 07	Jun 07
Total Units	19	31	24	25	41	188	11	12	14	39	45	38
% Change Last Year	137.5%	416.7%	1100.0%	127.3%	86.4%	1466.7%	-57.7%	-60.0%	-44.0%	5.4%	0.0%	0.0%
Value (\$000s)	2,003	3,524	3,362	3,231	4,717	19,677	879	1,698	3,849	3,644	4,401	3,599
% Change Last Year	202.6%	726.3%	1659.9%	190.4%	122.3%	1206.1%	-73.2%	-49.4%	20.8%	8.8%	3.7%	-21.6%
Unincorp. Units	17	28	19	21	35	180	8	9	8	38	38	37
% Change Last Year	142.9%	366.7%	850.0%	90.9%	66.7%	1700.0%	-60.0%	-65.4%	-63.6%	11.8%	-7.3%	5.7%
Value (\$000s)	1,778	3,228	2,598	2,855	4,020	18,581	678	763	678	3,564	3,564	3,470
% Change Last Year	190.5%	656.9%	1259.9%	156.6%	103.8%	1340.4%	-73.1%	-72.8%	-76.5%	25.1%	-9.4%	3.6%
Incorp. Units	2	3	5	4	6	8	3	3	6	1	7	1
% Change Last Year	100.0%	--	0.0%	0.0%	--	--	--	-25.0%	100.0%	-66.7%	75.0%	-66.7%
Value (\$000s)	225	296	764	376	697	1096	201	935	3171	80	837	129
% Change Last Year	350.0%	--	0.0%	0.0%	--	--	--	71.6%	956.9%	-84.1%	169.1%	-89.6%

Sources: Washington Parish Permit Office, City of Bogalusa, Town of Franklinton

Economic Reporter

St. Helena Parish

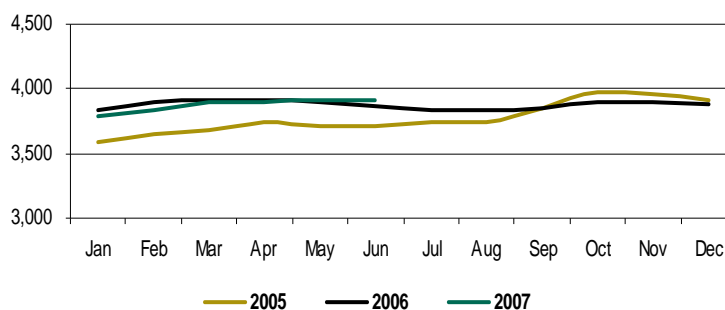
EMPLOYMENT

ST. HELENA PARISH

	Jul 06	Aug 06	Sep 06	Oct 06	Nov 06	Dec 06	Jan 07	Feb 07	Mar 07	Apr 07	May 07	Jun 07
Labor Force	4,123	4,151	4,100	4,122	4,136	4,170	4,113	4,106	4,137	4,144	4,147	4,262
% Change vs Prior Year	-1.4%	0.5%	-20.0%	-18.8%	-18.7%	-6.2%	-3.0%	-2.5%	-6.9%	-6.4%	-6.5%	-7.2%
Total Employment	3,829	3,835	3,845	3,900	3,891	3,883	3,790	3,841	3,891	3,903	3,905	3,920
% Change vs Prior Year	2.3%	2.3%	-0.1%	-1.7%	-1.9%	-0.7%	-1.1%	-1.3%	-0.4%	-0.2%	0.3%	1.6%
Number Unemployed	294	316	255	222	245	287	323	265	246	241	242	342
% Change vs Prior Year	-32.6%	-16.8%	-80.0%	-79.9%	-78.2%	-46.2%	-21.0%	-17.4%	-8.9%	-6.9%	-15.1%	-6.0%
Unemployment Rate	7.1%	7.6%	6.2%	5.4%	5.9%	6.9%	7.9%	6.5%	5.9%	5.8%	5.8%	8.0%
Change vs Prior Year	-3.3%	-1.6%	-18.7%	-16.4%	-16.2%	-5.1%	-1.7%	-1.1%	-0.6%	-0.4%	-1.0%	-0.6%

	3Q - 06	4Q - 06	1Q - 07	2Q - 07
Labor Force	4,125	4,143	4,119	4,184
% Change vs Prior Year	-7.9%	-14.9%	-2.2%	-0.1%
Total Employment	3,836	3,891	3,841	3,909
% Change vs Prior Year	1.5%	-1.4%	-1.0%	0.6%
Number Unemployed	288	251	278	275
% Change vs Prior Year	-58.7%	-72.7%	-16.6%	-9.1%
Unemployment Rate	7.0%	6.1%	6.8%	6.5%
Change vs Prior Year	-7.9%	-12.6%	-1.1%	-0.7%

Total Employment



Source: Labor Market Statistics, Local Area Unemployment Statistics Program

SALES AND USE TAXES

ST. HELENA PARISH

	Jul 06	Aug 06	Sep 06	Oct 06	Nov 06	Dec 06	Jan 07	Feb 07	Mar 07	Apr 07	May 07	Jun 07
Total Sales (Mil.)	\$ 5.80	\$ 4.82	\$ 4.79	\$ 5.41	\$ 4.50	\$ 4.39	\$ 6.33	\$ 2.51	\$ 5.18	\$ 5.79	\$ 4.87	\$ 4.91
% Change vs Prior Year	48.3%	50.9%	38.6%	29.3%	-4.1%	17.8%	6.5%	-29.0%	19.3%	-7.9%	-3.9%	1.4%
Sales Tax Collected (Mil.)	\$ 0.29	\$ 0.24	\$ 0.24	\$ 0.27	\$ 0.22	\$ 0.22	\$ 0.32	\$ 0.13	\$ 0.26	\$ 0.29	\$ 0.24	\$ 0.25
% Change vs Prior Year	48.3%	50.9%	38.6%	29.3%	-4.1%	17.8%	6.5%	-29.0%	19.3%	-7.9%	-3.9%	1.4%

Source: St. Helena Parish Sheriff's Office

RESIDENTIAL BUILDING PERMITS

ST. HELENA PARISH

	Jul 06	Aug 06	Sep 06	Oct 06	Nov 06	Dec 06	Jan 07	Feb 07	Mar 07	Apr 07	May 07	Jun 07
Total Units	7	10	4	5	6	7	1	1	-	4	4	4
% Change Last Year	75.0%	900.0%	-33.3%	0.0%	100.0%	600.0%	--	0.0%	0.0%	--	--	--
Value (\$000s)	633	1,630	439	560	809	1,095	163	163	-	500	500	500
% Change Last Year	75.8%	831.4%	-44.4%	0.0%	241.4%	742.3%	--	0.0%	0.0%	--	--	--

Source: 2006 = St Helena Parish Police Jury; 2007 = Louisiana Department of Economic Development (estimates with imputation)



Business Research Center
1514 Martens Drive
Hammond, LA 70401

Non-Profit Org.
U.S. Postage
PAID
Bulk Rate
Permit No. 193
Hammond LA



Our Special Thanks
This edition of the *Economic Reporter* would not exist without valuable contributions from:

Southeastern Louisiana University: Dr. A.M.M. Jamal, Dr. John Cresson, Krista H. Marchinko, Rene Abadie

St. Tammany Parish Sales and Use Tax Department

Tangipahoa Parish Permit Office and School Board Sales and Use Tax Department

Livingston Parish Building Permit Office and School Board Sales and Use Tax Division

Washington Parish Building and Planning Department and Sheriff's Office Sales and Use Tax Department

St. Helena Parish Sheriff's Office

and building permit offices of the following municipalities:

**Town of Abita Springs
Village of Albany
City of Bogalusa
City of Covington
City of Denham Springs
Village of Folsom
Town of Franklinton**

**Town of Independence
Town of Livingston
Town of Madisonville
City of Mandeville
Town of Pearl River
City of Ponchatoula
City of Slidell**

This publication is jointly produced by the following Southeastern Louisiana University departments:

- Business Research Center
- Economic & Business Development Center
- Southeast Louisiana Business Center
- College of Business