

Economic Reporter

Promoting Economic Development in Southeast Louisiana

Summer 2007

Vol. 3 · No. 2

NATIONAL

- Employment
- Retail Sales
- Building Permits

STATE

- Employment
- Retail Sales
- Building Permits

REGIONAL

- Employment
- Retail Sales
- Building Permits

NATIONAL, STATE, & REGIONAL COMPARISON

LOCAL

- St. Tammany
- Tangipahoa
- Livingston
- Washington
- St. Helena

CONTACT US

Southeastern Louisiana University
 Business Research Ctr.
 1514 Martens Drive
 Hammond, LA 70401

Phone: (985) 549-3199
 Fax: (985) 549-2127
 brc@selu.edu

NATIONAL

U.S. Economy

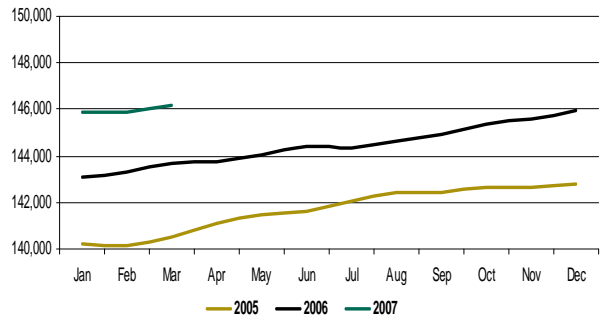
EMPLOYMENT

UNITED STATES (Numbers in Thousands)

	Apr 06	May 06	Jun 06	Jul 06	Aug 06	Sep 06	Oct 06	Nov 06	Dec 06	Jan 07	Feb 07	Mar 07
Labor Force	150,862	151,051	151,370	151,558	151,734	151,818	152,052	152,449	152,775	152,958	152,725	152,884
% Change vs Prior Year	1.4%	1.3%	1.5%	1.3%	1.3%	1.1%	1.3%	1.5%	1.7%	1.9%	1.5%	1.5%
Total Employment	143,763	144,045	144,386	144,330	144,618	144,906	145,337	145,623	145,926	145,915	145,888	146,145
% Change vs Prior Year	1.9%	1.8%	1.9%	1.6%	1.5%	1.7%	1.9%	2.1%	2.2%	2.0%	1.8%	1.7%
Total Nonfarm Emp.	135,794	135,816	135,910	136,172	136,363	136,528	136,601	136,783	136,982	137,108	137,133	137,310
% Change vs Prior Year	1.9%	1.8%	1.8%	1.7%	1.8%	1.9%	1.9%	1.8%	1.9%	1.5%	1.3%	1.2%
Number Unemployed	7,098	7,006	6,984	7,228	7,116	6,912	6,715	6,826	6,849	7,043	6,837	6,738
% Change vs Prior Year	-7.4%	-8.4%	-6.7%	-3.6%	-3.7%	-9.8%	-9.5%	-9.9%	-7.1%	0.3%	-4.5%	-3.9%
Unemployment Rate	4.7%	4.6%	4.6%	4.8%	4.7%	4.6%	4.4%	4.5%	4.5%	4.6%	4.5%	4.4%
Change vs Prior Year	-0.5%	-0.5%	-0.4%	-0.2%	-0.2%	-0.5%	-0.5%	-0.5%	-0.4%	-0.1%	-0.3%	-0.3%

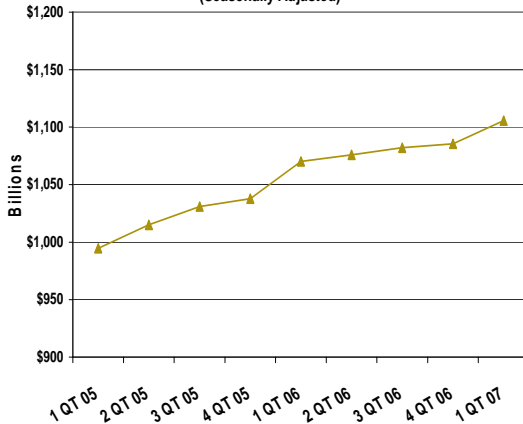
	2QT-06	3QT-06	4QT-06	1QT-07
Labor Force	151,094	151,703	152,425	152,856
% Change vs Prior Year	1.4%	1.2%	1.5%	1.6%
Total Employment	144,065	144,618	145,629	145,983
% Change vs Prior Year	1.9%	1.6%	2.1%	1.8%
Total Nonfarm Emp.	135,840	136,354	136,789	137,184
% Change vs Prior Year	1.8%	1.8%	1.9%	1.3%
Number Unemployed	7,029	7,085	6,797	6,873
% Change vs Prior Year	-7.5%	-5.7%	-8.8%	-2.7%
Unemployment Rate	4.6%	4.7%	4.5%	4.5%
Change vs Prior Year	-0.5%	-0.3%	-0.5%	-0.2%

Total Employment (000s)



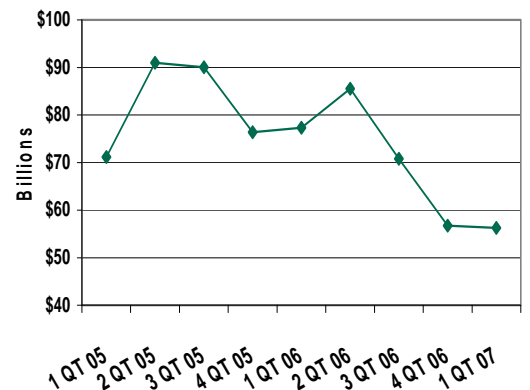
Source: Louisiana Department of Labor

U.S. Retail and Food Service Sales (Seasonally Adjusted)



Source: U.S. Census Bureau

Value of Residential Building Permits (U.S.)



Source: U.S. Census Bureau

STATE

Louisiana Economy

EMPLOYMENT

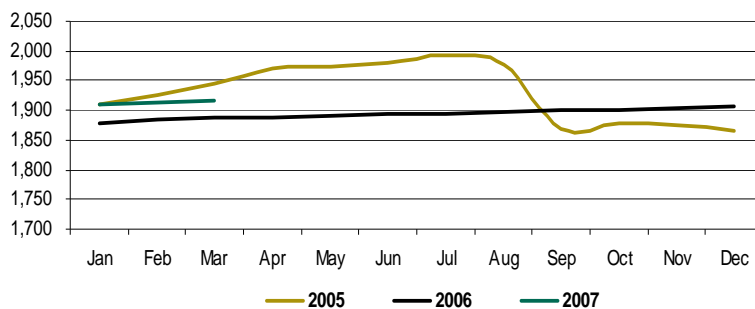
LOUISIANA (Numbers in Thousands)

	Apr 06	May 06	Jun 06	Jul 06	Aug 06	Sep 06	Oct 06	Nov 06	Dec 06	Jan 07	Feb 07	Mar 07
Labor Force	1,963	1,966	1,964	1,957	1,969	1,977	1,984	1,986	1,988	1,985	1,988	1,995
% Change vs Prior Year	-4.8%	-5.2%	-6.8%	-7.2%	-5.5%	-5.8%	-5.6%	-5.7%	0.3%	0.9%	1.0%	1.5%
Total Employment	1,888	1,890	1,894	1,896	1,896	1,899	1,901	1,903	1,907	1,909	1,912	1,917
% Change vs Prior Year	-4.3%	-4.2%	-4.4%	-4.8%	-4.1%	1.7%	1.2%	1.5%	2.2%	1.6%	1.5%	1.6%
Total Nonfarm Emp.	1,836	1,845	1,849	1,848	1,861	1,875	1,879	1,884	1,894	1,896	1,905	1,910
% Change vs Prior Year	-5.8%	-5.5%	-5.3%	-4.7%	-4.1%	2.8%	5.8%	4.6%	4.2%	4.8%	4.5%	4.1%
Number Unemployed	76	76	70	62	72	78	83	83	81	76	76	79
% Change vs Prior Year	-16.7%	-24.0%	-45.1%	-47.1%	-32.4%	-66.1%	-62.6%	-64.0%	-29.6%	-14.3%	-8.7%	-1.3%
Unemployment Rate	3.9%	3.8%	3.6%	3.2%	3.7%	4.0%	4.2%	4.2%	4.1%	3.8%	3.8%	3.9%
Change vs Prior Year	-0.5%	-1.0%	-2.5%	-2.3%	-1.4%	-7.0%	-6.4%	-6.7%	-1.7%	-0.7%	-0.4%	-0.2%

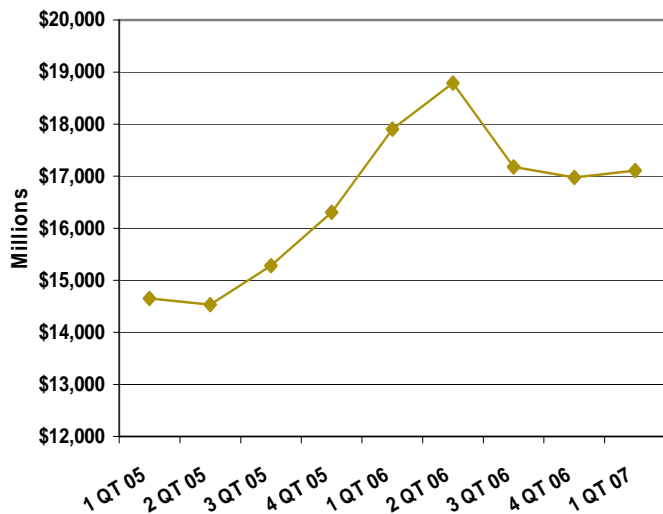
	2Q T-06	3Q T-06	4Q T-06	1Q T-07
Labor Force	1,964	1,968	1,986	1,989
% Change vs Prior Year	-5.6%	-6.2%	-3.7%	1.1%
Total Employment	1,891	1,897	1,904	1,912
% Change vs Prior Year	-4.3%	-2.5%	1.6%	1.5%
Total Nonfarm Emp.	1,843	1,861	1,886	1,904
% Change vs Prior Year	-5.5%	-2.1%	4.8%	4.5%
Number Unemployed	74	71	82	77
% Change vs Prior Year	-30.4%	-53.2%	-56.5%	-8.3%
Unemployment Rate	3.8%	3.6%	4.2%	3.8%
Change vs Prior Year	-1.3%	-3.6%	-4.9%	-0.4%

Source: Louisiana Department of Labor, Labor Market Statistics

Total Employment (000s)

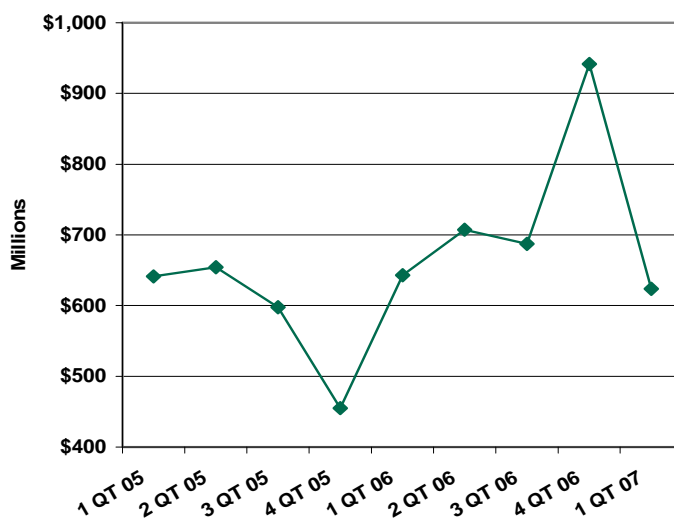


Taxable Retail Sales
(Louisiana)



Source: Louisiana Department of Revenue

Value of Residential Building Permits
(Louisiana)



Source: LA Department of Economic Development (includes only those 45 parishes which report monthly)

REGIONAL

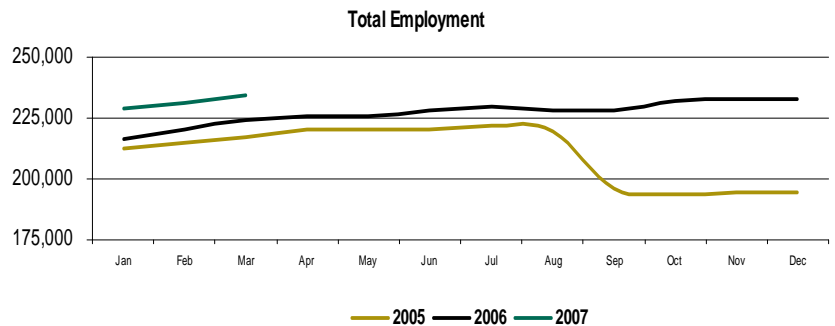
Northshore Economy

EMPLOYMENT

NORTHSHORE REGION

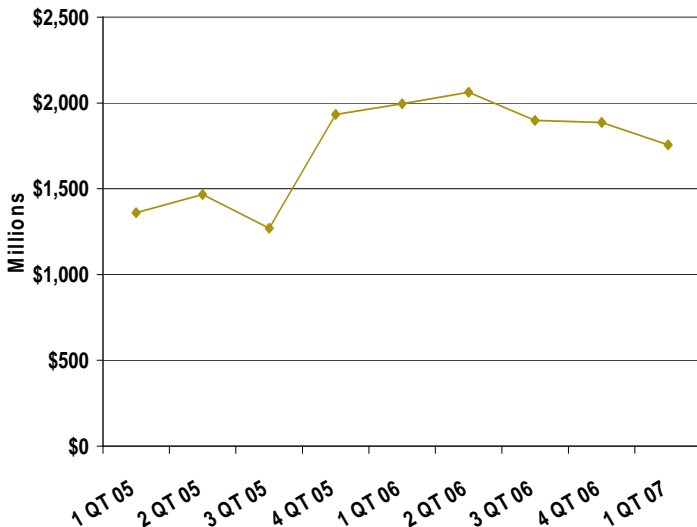
	Apr 06	May 06	Jun 06	Jul 06	Aug 06	Sep 06	Oct 06	Nov 06	Dec 06	Jan 07	Feb 07	Mar 07
Labor Force	233,690	234,978	239,696	238,465	237,685	237,109	240,621	241,509	240,549	238,238	238,434	241,519
% Change vs Prior Year	1.9%	2.0%	2.5%	1.9%	3.0%	1.3%	5.8%	5.4%	15.0%	4.0%	3.5%	3.7%
Total Employment	225,686	226,150	228,268	229,424	228,327	228,180	232,290	232,926	232,472	228,784	230,915	234,036
% Change vs Prior Year	2.4%	2.6%	3.5%	3.4%	3.9%	16.3%	20.1%	19.8%	19.6%	5.5%	4.8%	4.5%
Number Unemployed	8,004	8,828	11,428	9,041	9,358	8,929	8,331	8,583	8,077	9,454	7,519	7,729
% Change vs Prior Year	-11.4%	-12.9%	-14.3%	-25.7%	-15.3%	-76.4%	-75.5%	-75.3%	-45.1%	-23.7%	-25.3%	-14.3%
Unemployment Rate	3.4%	3.8%	4.8%	3.8%	3.9%	3.8%	3.5%	3.6%	3.4%	4.0%	3.2%	3.2%
Change vs Prior Year	-0.5%	-0.6%	-0.9%	-1.4%	-0.9%	-12.4%	-11.5%	-11.6%	-3.7%	-1.4%	-1.2%	-0.7%

	2Q T-06	3Q T-06	4Q T-06	1Q T-07
Labor Force	236,121	237,753	240,893	239,397
% Change vs Prior Year	2.1%	2.1%	8.6%	3.7%
Total Employment	226,701	228,644	232,563	231,245
% Change vs Prior Year	2.9%	7.5%	19.8%	4.9%
Number Unemployed	9,420	9,109	8,330	8,234
% Change vs Prior Year	-13.1%	-55.3%	-70.0%	-21.5%
Unemployment Rate	4.0%	3.8%	3.5%	3.4%
Change vs Prior Year	-0.7%	-4.9%	-8.9%	-1.1%



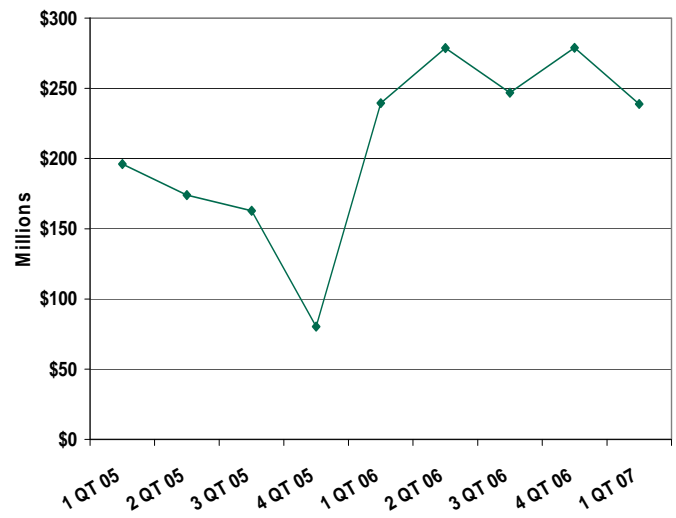
Source: Labor Market Statistics, Local Area Unemployment Statistics Program

Taxable Retail Sales (Northshore Region)



Sources: Livingston Parish School Board Sales and Use Tax Division, St. Helena Parish Sheriff's Office, St. Tammany Parish Sales and Use Tax Department, Tangipahoa Parish School Board Sales and Use Tax Division, Washington Parish Sheriff's Office Sales and Use Tax Department

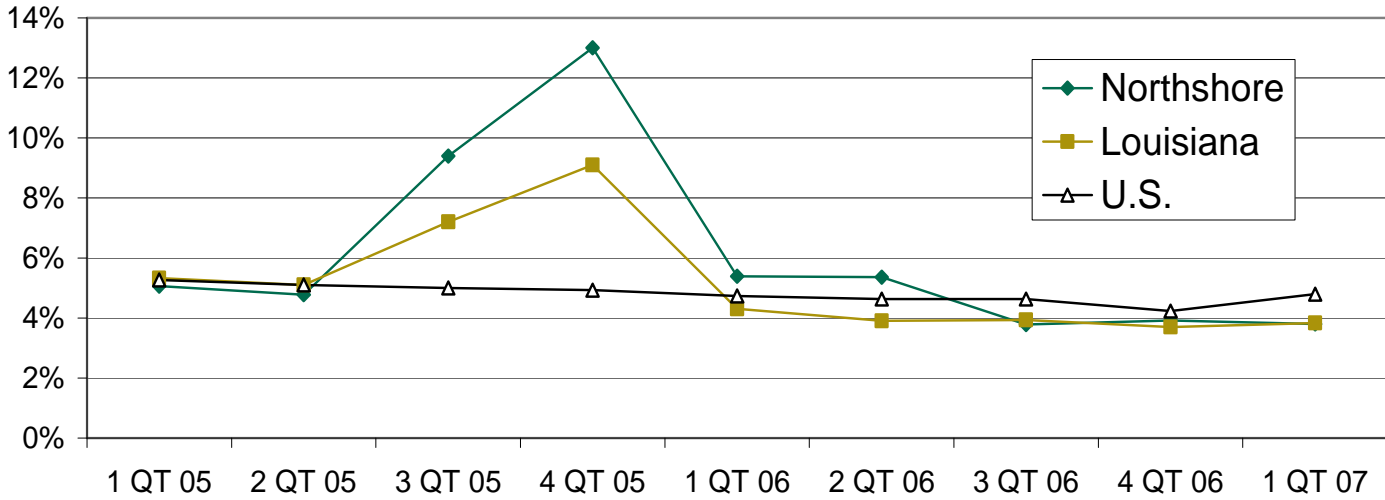
Value of Residential Building Permits (Northshore Region)



Sources: Louisiana Department of Economic Development, Livingston Parish Permit Office, Town of Albany, City of Denham Springs, Town of Livingston, Tangipahoa Parish Permit Office, City of Hammond, Town of Independence, City of Ponchatoula, Washington Parish Permit Office, City of Bogalusa, Town of Franklinton

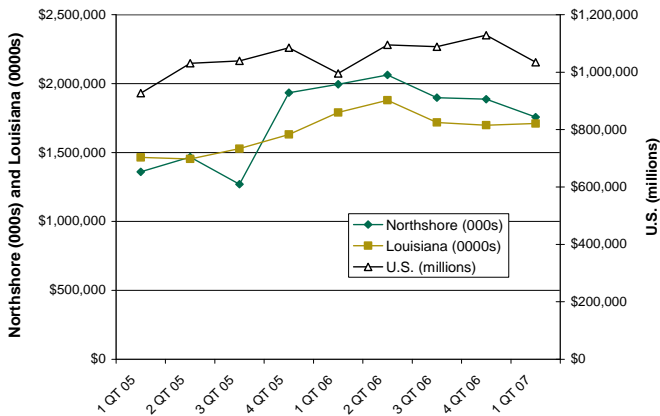
NATIONAL, STATE, & REGIONAL COMPARISON

Quarterly Average Unemployment Rate



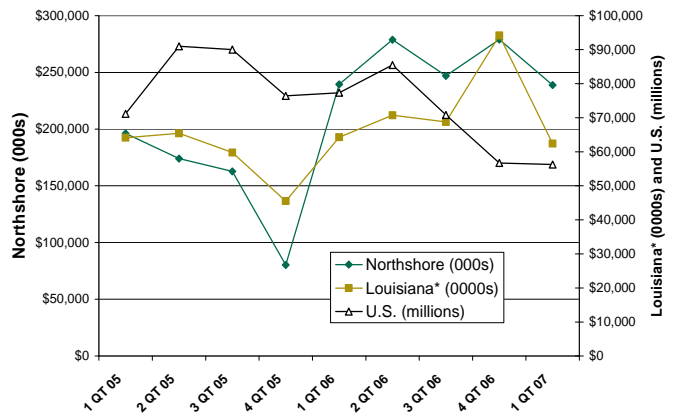
Sources: U.S. = U.S. Department of Labor, Bureau of Labor Statistics
 LA and Northshore = Labor Market Statistics, Local Area Unemployment Statistics Program

Volume of Retail Sales (Not Seasonally Adjusted)



Sources: U.S. = U.S. Census Bureau; Louisiana = Louisiana Department of Revenue;
 Northshore = Livingston Parish School Board Sales and Use Tax Division, St. Helena Parish Sheriff's Office, St. Tammany Parish Sales and Use Tax Department, Tangipahoa Parish School Board Sales and Use Tax Division, Washington Parish Sheriff's Office Sales and Use Tax Department

Value of Residential Building Permits



Sources: U.S. = U.S. Census Bureau; Louisiana = Louisiana Department of Economic Development
 (* Louisiana numbers include only those 45 parishes which report monthly)
 Northshore = Louisiana Department of Economic Development, Livingston Parish Permit Office, Town of Albany, City of Denham Springs, Town of Livingston, Tangipahoa Parish Permit Office, City of Hammond, Town of Independence, City of Ponchatoula, Washington Parish Permit Office, City of Bogalusa, Town of Franklinton

LOCAL

St. Tammany Parish

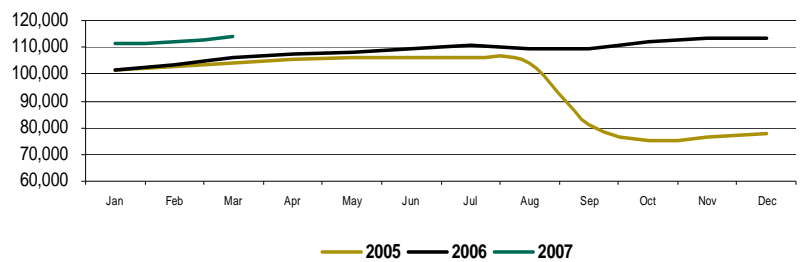
EMPLOYMENT

ST. TAMMANY PARISH

	Apr 06	May 06	Jun 06	Jul 06	Aug 06	Sep 06	Oct 06	Nov 06	Dec 06	Jan 07	Feb 07	Mar 07
Labor Force	110,681	111,691	114,453	114,272	113,528	113,203	115,738	116,611	116,264	115,210	115,320	117,162
% Change vs Prior Year	1.8%	1.4%	2.7%	2.8%	4.7%	13.7%	25.5%	24.3%	36.9%	7.2%	6.3%	6.4%
Total Employment	107,147	107,878	109,674	110,587	109,699	109,591	112,331	113,113	113,105	111,401	112,319	114,002
% Change vs Prior Year	1.7%	1.6%	3.2%	4.0%	5.3%	34.8%	49.0%	47.7%	45.5%	9.8%	8.3%	7.6%
Number Unemployed	3,534	3,813	4,779	3,685	3,829	3,612	3,407	3,498	3,159	3,809	3,001	3,160
% Change vs Prior Year	6.7%	-3.7%	-7.1%	-22.5%	-10.4%	-80.2%	-79.8%	-79.7%	-56.2%	-36.2%	-37.9%	-23.6%
Unemployment Rate	3.2%	3.4%	4.2%	3.2%	3.4%	3.2%	2.9%	3.0%	2.7%	3.3%	2.6%	2.7%
Change vs Prior Year	0.2%	-0.2%	-0.4%	-1.1%	-0.5%	-15.1%	-15.3%	-15.3%	-5.8%	-2.3%	-1.9%	-1.1%

	2Q-06	3Q-06	4Q-06	1Q-07
Labor Force	112,275	113,668	116,204	115,897
% Change vs Prior Year	2.0%	6.9%	28.7%	6.6%
Total Employment	108,233	109,959	112,850	112,574
% Change vs Prior Year	2.2%	13.0%	47.4%	8.6%
Number Unemployed	4,042	3,709	3,355	3,323
% Change vs Prior Year	-2.4%	-59.2%	-75.6%	-33.3%
Unemployment Rate	3.6%	3.3%	2.9%	2.9%
Change vs Prior Year	-0.1%	-5.6%	-12.1%	-1.8%

St. Tammany Parish Total Employment



Source: Labor Market Statistics, Local Area Unemployment Statistics Program

SALES AND USE TAXES

ST. TAMMANY PARISH

	Apr 06	May 06	Jun 06	Jul 06	Aug 06	Sep 06	Oct 06	Nov 06	Dec 06	Jan 07*	Feb 07	Mar 07
Total Sales (Mil.)	\$ 404.40	\$ 432.80	\$ 437.89	\$ 376.39	\$ 372.21	\$ 394.25	\$ 336.10	\$ 372.38	\$ 441.06	\$ 325.79	\$ 308.59	\$ 395.23
% Change vs Prior Year	34.5%	56.4%	45.1%	41.1%	117.7%	39.8%	-18.3%	-5.0%	11.2%	-17.9%	-21.1%	-10.2%
Sales Tax Collected (Mil.)	\$ 19.51	\$ 20.88	\$ 21.13	\$ 18.16	\$ 17.96	\$ 19.02	\$ 16.22	\$ 17.97	\$ 21.28	\$ 15.72	\$ 14.89	\$ 19.07
% Change vs Prior Year	34.5%	56.4%	45.1%	41.1%	117.7%	39.8%	-18.3%	-5.0%	11.2%	-17.9%	-21.1%	-10.2%

* Average tax rate used to calculate estimated total sales changed to 4.825% from January 2007 forward, per advice from Shawn McManus, St. Tammany Sales and Use Tax Director.

Source: St. Tammany Parish Sales and Use Tax Department

RESIDENTIAL BUILDING PERMITS

ST. TAMMANY PARISH

	Apr 06	May 06	Jun 06	Jul 06	Aug 06	Sep 06	Oct 06	Nov 06	Dec 06	Jan 07	Feb 07	Mar 07
Total Units	276	304	289	186	332	217	239	210	223	237	126	196
% Change Last Year	30.8%	16.9%	26.2%	-18.4%	-12.4%	843.5%	696.7%	296.2%	486.8%	523.7%	-63.6%	-46.9%
Value (\$000s)	49,273	56,562	54,858	33,759	42,427	37,888	50,425	38,864	39,653	81,307	28,412	40,828
% Change Last Year	36.0%	29.2%	42.2%	-14.0%	-30.4%	1540.9%	885.7%	335.1%	430.5%	934.5%	-52.2%	-36.3%
Unincorp. Units	236	228	235	162	204	165	195	187	197	177	95	147
% Change Last Year	24.2%	-5.8%	9.8%	-21.7%	-42.4%	768.4%	712.5%	750.0%	838.1%	669.6%	-67.8%	-56.1%
Value (\$000s)	40,981	43,018	47,380	29,597	35,141	30,947	43,429	35,719	35,270	46,452	23,749	31,777
% Change Last Year	24.4%	5.5%	29.9%	-15.4%	-35.9%	2464.0%	1134.3%	838.4%	828.8%	895.3%	-52.5%	-44.0%
Incorp. Units	40	76	54	24	128	52	44	23	26	60	31	49
% Change Last Year	90.5%	322.2%	260.0%	14.3%	412.0%	1200.0%	633.3%	-25.8%	52.9%	300.0%	-39.2%	44.1%
Value (\$000s)	8,292	13,544	7,478	4,162	7,286	6,940	6,996	3,145	4,383	34,855	4,663	9,051
% Change Last Year	153.5%	354.0%	255.6%	-2.1%	18.0%	529.8%	338.1%	-38.6%	19.2%	991.7%	-50.5%	23.3%

Sources: 2006 = Economic Development Information Clearing House; 2007 = <http://censtats.census.gov/>

Tangipahoa Parish

EMPLOYMENT

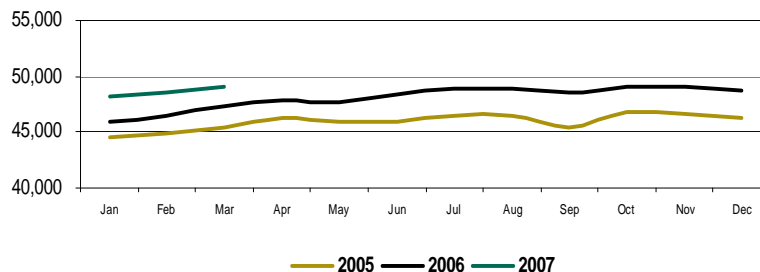
TANGIPAHOA PARISH

	Apr 06	May 06	Jun 06	Jul 06	Aug 06	Sep 06	Oct 06	Nov 06	Dec 06	Jan 07	Feb 07	Mar 07
Labor Force	49,730	49,892	51,126	51,220	51,145	50,842	51,183	51,152	50,891	50,545	50,476	51,015
% Change vs Prior Year	2.6%	2.9%	3.8%	3.7%	3.8%	-9.4%	-9.1%	-8.9%	2.1%	3.2%	3.6%	3.1%
Total Employment	47,766	47,756	48,359	48,956	48,861	48,619	49,101	49,036	48,808	48,199	48,633	49,120
% Change vs Prior Year	3.4%	3.8%	5.3%	5.4%	5.0%	7.1%	5.0%	5.2%	5.6%	4.8%	4.8%	3.9%
Number Unemployed	1,964	2,136	2,767	2,264	2,284	2,223	2,082	2,116	2,083	2,346	1,843	1,895
% Change vs Prior Year	-13.6%	-13.2%	-16.0%	-23.2%	-16.7%	-79.4%	-78.1%	-77.9%	-42.3%	-21.4%	-21.3%	-13.8%
Unemployment Rate	3.9%	4.3%	5.4%	4.4%	4.5%	4.4%	4.1%	4.1%	4.1%	4.6%	3.7%	3.7%
Change vs Prior Year	-0.8%	-0.8%	-1.3%	-1.6%	-1.1%	-14.8%	-12.8%	-12.9%	-3.1%	-1.5%	-1.1%	-0.7%

	2QT-06	3QT-06	4QT-06	1QT-07
Labor Force	50,249	51,069	51,075	50,679
% Change vs Prior Year	3.1%	-1.0%	-5.6%	3.3%
Total Employment	47,960	48,812	48,982	48,651
% Change vs Prior Year	4.2%	5.8%	5.2%	4.5%
Number Unemployed	2,289	2,257	2,094	2,028
% Change vs Prior Year	-14.5%	-58.9%	-72.3%	-19.1%
Unemployment Rate	4.5%	4.4%	4.1%	4.0%
Change vs Prior Year	-1.0%	-5.8%	-9.6%	-1.1%

Source: Labor Market Statistics, Local Area Unemployment Statistics Program

Tangipahoa Parish Total Employment



SALES AND USE TAXES

TANGIPAHOA PARISH

	Apr 06	May 06	Jun 06	Jul 06	Aug 06	Sep 06	Oct 06	Nov 06	Dec 06	Jan 07	Feb 07	Mar 07
Total Sales (Mil.)	\$ 155.99	\$ 139.17	\$ 153.07	\$ 153.72	\$ 135.04	\$ 142.36	\$ 141.40	\$ 137.10	\$ 124.06	\$ 154.63	\$ 123.32	\$ 119.76
% Change vs Prior Year	41.2%	35.1%	50.1%	39.0%	36.6%	90.6%	0.3%	-4.8%	-13.3%	-12.4%	-4.6%	-17.2%
Sales Tax Collected* (Mil.)	\$ 3.12	\$ 2.78	\$ 3.06	\$ 3.07	\$ 2.70	\$ 2.85	\$ 2.83	\$ 2.74	\$ 2.48	\$ 3.09	\$ 2.47	\$ 2.40
% Change vs Prior Year	41.2%	35.1%	50.1%	39.0%	36.6%	90.6%	0.3%	-4.8%	-13.3%	-12.4%	-4.6%	-17.2%

* Sales tax receipts reflect only the 2% allocation to the Tangipahoa Parish School Board.

Source: Tangipahoa Parish Council - School Board

RESIDENTIAL BUILDING PERMITS

TANGIPAHOA PARISH

	Apr 06	May 06	Jun 06	Jul 06	Aug 06	Sep 06	Oct 06	Nov 06	Dec 06	Jan 07	Feb 07	Mar 07
Total Units	175	124	109	110	175	153	149	93	425	65	72	105
% Change Last Year	243.1%	74.6%	58.0%	31.0%	153.6%	10.1%	30.7%	12.0%	507.1%	-49.6%	-34.5%	-40.0%
Value (\$000s)	25,565	21,218	17,339	16,908	25,701	19,360	16,590	12,738	59,576	10,199	9,618	12,234
% Change Last Year	288.3%	124.0%	80.3%	99.6%	193.2%	41.9%	151.5%	21.1%	472.9%	-45.7%	-36.7%	-51.0%
Unincorp. Units	149	99	81	96	133	95	117	74	368	55	64	85
% Change Last Year	282.1%	86.8%	39.7%	37.1%	121.7%	-6.9%	56.0%	25.4%	557.1%	-43.3%	-27.3%	-41.8%
Value (\$000s)	21,749	15,718	12,124	14,421	20,155	14,111	13,771	9,704	52,341	8,635	8,194	10,393
% Change Last Year	334.7%	133.0%	52.5%	128.4%	157.8%	51.8%	515.6%	30.5%	556.4%	-34.2%	-33.1%	-46.9%
Incorp. Units	26	25	28	14	42	58	32	19	57	10	8	20
% Change Last Year	116.7%	38.9%	154.5%	0.0%	366.7%	56.8%	-17.9%	-20.8%	307.1%	-68.8%	-63.6%	-31.0%
Value (\$000s)	3816	5500	5215	2487	5545	5249	2818	3034	7235	1564	1424	1840
% Change Last Year	141.4%	101.8%	213.3%	15.4%	484.5%	20.6%	-35.4%	-1.5%	198.3%	-72.4%	-51.8%	-66.0%

Sources: Tangipahoa Parish Permit Office, City of Hammond, Town of Independence, City of Ponchatoula, Village of Tickfaw

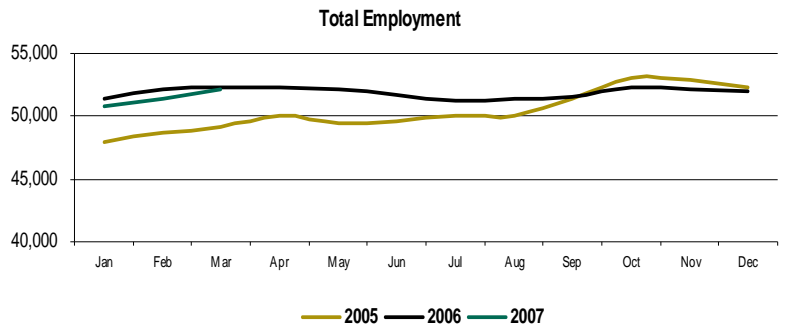
Livingston Parish

EMPLOYMENT

LIVINGSTON PARISH

	Apr 06	May 06	Jun 06	Jul 06	Aug 06	Sep 06	Oct 06	Nov 06	Dec 06	Jan 07	Feb 07	Mar 07
Labor Force	53,933	53,985	54,219	53,285	53,450	53,501	54,081	54,042	53,828	52,850	53,089	53,783
% Change vs Prior Year	3.1%	4.0%	2.9%	0.7%	1.4%	-4.0%	-4.7%	-4.9%	-1.1%	-0.9%	-1.5%	-0.5%
Total Employment	52,348	52,117	51,679	51,277	51,351	51,488	52,233	52,107	52,004	50,750	51,438	52,108
% Change vs Prior Year	4.5%	5.3%	4.3%	2.5%	2.5%	0.2%	-1.5%	-1.6%	-0.5%	-1.1%	-1.3%	-0.4%
Number Unemployed	1,585	1,868	2,540	2,008	2,099	2,013	1,848	1,935	1,824	2,100	1,651	1,675
% Change vs Prior Year	-28.5%	-22.5%	-19.1%	-30.4%	-19.8%	-53.8%	-50.3%	-50.1%	-16.3%	4.4%	-7.0%	-1.3%
Unemployment Rate	2.9%	3.5%	4.7%	3.8%	3.9%	3.8%	3.4%	3.6%	3.4%	4.0%	3.1%	3.1%
Change vs Prior Year	-1.3%	-1.1%	-1.3%	-1.7%	-1.1%	-4.0%	-3.2%	-3.2%	-0.6%	0.2%	-0.2%	0.0%

	2Q7-06	3Q7-06	4Q7-06	1Q7-07
Labor Force	54,046	53,412	53,984	53,241
% Change vs Prior Year	3.3%	-0.7%	-3.6%	-1.0%
Total Employment	52,048	51,372	52,115	51,432
% Change vs Prior Year	4.7%	1.7%	-1.2%	-1.0%
Number Unemployed	1,998	2,040	1,869	1,809
% Change vs Prior Year	-22.8%	-37.9%	-42.6%	-1.1%
Unemployment Rate	3.7%	3.8%	3.5%	3.4%
Change vs Prior Year	-1.2%	-2.3%	-2.3%	0.0%



Source: Labor Market Statistics, Local Area Unemployment Statistics Program

SALES AND USE TAXES

LIVINGSTON PARISH

	Apr 06	May 06	Jun 06	Jul 06	Aug 06	Sep 06	Oct 06	Nov 06	Dec 06	Jan 07	Feb 07	Mar 07
Total Sales (Mil.)	\$ 110.01	\$ 97.21	\$ 105.68	\$ 97.03	\$ 100.50	\$ 105.15	\$ 97.01	\$ 97.15	\$ 117.01	\$ 89.16	\$ 93.04	\$ 116.40
% Change vs Prior Year	33.5%	25.4%	30.8%	16.1%	29.8%	39.6%	3.5%	-2.9%	28.9%	-17.8%	5.4%	30.5%
Sales Tax Collected (Mil.)	\$ 5.52	\$ 4.92	\$ 5.31	\$ 4.85	\$ 5.03	\$ 5.26	\$ 4.85	\$ 4.86	\$ 5.85	\$ 4.51	\$ 4.71	\$ 5.84
% Change vs Prior Year	33.2%	26.4%	30.0%	15.8%	28.9%	38.7%	1.5%	-3.2%	28.0%	-16.9%	6.4%	30.4%

Source: Livingston Parish School Board Sales and Use Tax Division

RESIDENTIAL BUILDING PERMITS

LIVINGSTON PARISH

	Apr 06	May 06	Jun 06	Jul 06	Aug 06	Sep 06	Oct 06	Nov 06	Dec 06	Jan 07	Feb 07	Mar 07
Total Units	189	137	144	150	226	116	97	101	142	129	141	164
% Change Last Year	64.3%	65.1%	48.5%	87.5%	98.2%	-12.8%	3.2%	-5.6%	34.0%	6.6%	30.6%	-29.0%
Value (\$000s)	15,623	11,237	13,863	14,307	35,512	9,447	8,329	9,132	13,461	22,778	12,584	14,174
% Change Last Year	52.6%	66.5%	69.0%	112.0%	289.4%	-13.1%	6.3%	-0.8%	47.7%	140.8%	27.5%	-28.9%
Unincorp. Units	183	133	133	141	219	113	92	99	133	127	138	162
% Change Last Year	71.0%	64.2%	46.2%	76.3%	92.1%	-15.0%	4.5%	-4.8%	34.3%	8.5%	29.0%	-27.7%
Value (\$000s)	14,858	10,547	12,153	12,883	34,394	9,036	7,777	8,738	12,565	22,408	12,146	13,764
% Change Last Year	60.4%	61.4%	57.5%	90.9%	277.2%	-16.9%	8.2%	-1.7%	49.4%	146.9%	25.1%	-27.9%
Incorp. Units	6	4	11	9	7	3	5	2	9	2	3	2
% Change Last Year	-25.0%	100.0%	83.3%	--	--	--	-16.7%	-33.3%	28.6%	-50.0%	200.0%	-71.4%
Value (\$000s)	\$ 765.00	\$ 690.00	\$ 1,710.00	\$ 1,423.50	\$ 1,118.19	\$ 411.19	\$ 551.79	\$ 393.69	\$ 896.20	\$ 369.80	\$ 438.75	\$ 410.00
% Change Last Year	-21.6%	220.9%	251.6%	--	--	--	-14.8%	21.9%	27.8%	-3.4%	174.2%	-52.5%

Sources: Livingston Parish Permit Office, Town of Albany, City of Denham Springs, Town of Livingston

Washington Parish

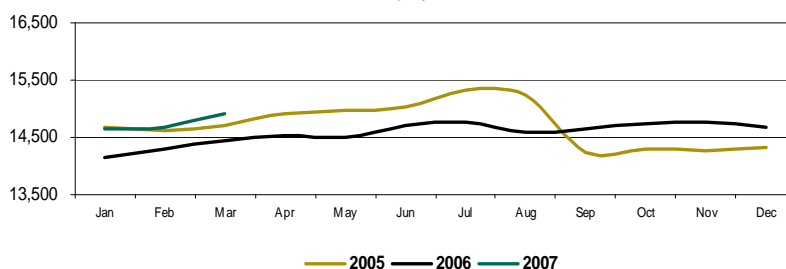
EMPLOYMENT

WASHINGTON PARISH

	Apr 06	May 06	Jun 06	Jul 06	Aug 06	Sep 06	Oct 06	Nov 06	Dec 06	Jan 07	Feb 07	Mar 07
Labor Force	15,178	15,233	15,675	15,565	15,411	15,463	15,497	15,568	15,396	15,520	15,443	15,668
% Change vs Prior Year	-3.9%	-4.5%	-4.1%	-5.4%	-5.3%	-11.5%	-9.5%	-9.4%	-0.7%	2.3%	2.3%	3.3%
Total Employment	14,516	14,507	14,697	14,775	14,581	14,637	14,725	14,779	14,672	14,644	14,684	14,915
% Change vs Prior Year	-2.6%	-3.1%	-2.3%	-3.5%	-4.3%	2.7%	3.0%	3.5%	2.5%	3.5%	2.7%	3.2%
Number Unemployed	662	726	978	790	830	826	772	789	724	876	759	753
% Change vs Prior Year	-25.2%	-24.9%	-24.8%	-31.1%	-20.4%	-74.4%	-72.8%	-72.9%	-38.6%	-14.2%	-3.9%	5.2%
Unemployment Rate	4.4%	4.8%	6.2%	5.1%	5.4%	5.3%	5.0%	5.1%	4.7%	5.6%	4.9%	4.8%
Change vs Prior Year	-1.2%	-1.3%	-1.8%	-1.9%	-1.0%	-13.2%	-11.6%	-11.8%	-2.9%	-1.1%	-0.3%	0.1%

	2Q-06	3Q-06	4Q-06	1Q-07
Labor Force	15,362	15,480	15,487	15,544
% Change vs Prior Year	-4.1%	-7.5%	-6.7%	2.6%
Total Employment	14,573	14,664	14,725	14,748
% Change vs Prior Year	-2.7%	-1.8%	3.0%	3.1%
Number Unemployed	789	815	762	796
% Change vs Prior Year	-24.9%	-54.9%	-67.0%	-5.5%
Unemployment Rate	5.1%	5.3%	4.9%	5.1%
Change vs Prior Year	-1.4%	-5.4%	-8.8%	-0.4%

Total Employment



Source: Labor Market Statistics, Local Area Unemployment Statistics Program

SALES AND USE TAXES

WASHINGTON PARISH

	Apr 06	May 06	Jun 06	Jul 06	Aug 06	Sep 06	Oct 06	Nov 06	Dec 06	Jan 07	Feb 07	Mar 07
Total Sales (Mil.)	\$ 39.62	\$ 38.76	\$ 35.33	\$ 30.35	\$ 33.03	\$ 35.22	\$ 40.31	\$ 30.97	\$ 31.55	\$ 40.08	\$ 28.61	\$ 31.54
% Change vs Prior Year	37.7%	23.1%	16.2%	-7.6%	27.1%	88.9%	22.0%	-12.1%	-15.9%	-13.9%	-18.5%	-10.2%
Sales Tax Collected (Mil.)	\$ 1.82	\$ 1.78	\$ 1.62	\$ 1.40	\$ 1.52	\$ 1.62	\$ 1.85	\$ 1.42	\$ 1.45	\$ 1.85	\$ 1.32	\$ 1.46
% Change vs Prior Year	37.7%	23.1%	16.2%	-7.6%	27.1%	88.9%	22.0%	-12.1%	-15.9%	-13.5%	-18.1%	-9.8%

Source: Washington Parish Sheriff's Office - Sales and Use Tax Department

RESIDENTIAL BUILDING PERMITS

WASHINGTON PARISH

	Apr 06	May 06	Jun 06	Jul 06	Aug 06	Sep 06	Oct 06	Nov 06	Dec 06	Jan 07	Feb 07	Mar 07
Total Units	37	45	38	19	31	24	25	41	188	11	12	14
% Change Last Year	105.6%	350.0%	192.3%	137.5%	416.7%	1100.0%	127.3%	86.4%	1466.7%	-57.7%	-60.0%	-44.0%
Value (\$000s)	3,351	4,246	4,594	2,003	3,524	3,362	3,231	4,717	19,677	879	1,698	3,849
% Change Last Year	166.2%	426.1%	405.6%	202.6%	726.3%	1659.9%	190.4%	122.3%	1206.1%	-73.2%	-49.4%	20.8%
Unincorp. Units	34	41	35	17	28	19	21	35	180	8	9	8
% Change Last Year	142.9%	310.0%	191.7%	142.9%	366.7%	850.0%	90.9%	66.7%	1700.0%	-60.0%	-65.4%	-63.6%
Value (\$000s)	2,849	3,935	3,351	1,778	3,228	2,598	2,855	4,020	18,581	678	763	678
% Change Last Year	141.3%	387.6%	302.5%	190.5%	656.9%	1259.9%	156.6%	103.8%	1340.4%	-73.1%	-72.8%	-76.5%
Incorp. Units	3	4	3	2	3	5	4	6	8	3	3	6
% Change Last Year	-25.0%	--	200.0%	100.0%	--	--	--	500.0%	300.0%	-50.0%	-25.0%	100.0%
Value (\$000s)	502	311	1243	225	296	764	376	697	1096	201	935	3171
% Change Last Year	545.7%	--	1535.5%	350.0%	--	--	--	364.7%	406.4%	-73.5%	71.6%	956.9%

Sources: Washington Parish Permit Office, City of Bogalusa, Town of Franklinton

Economic Reporter

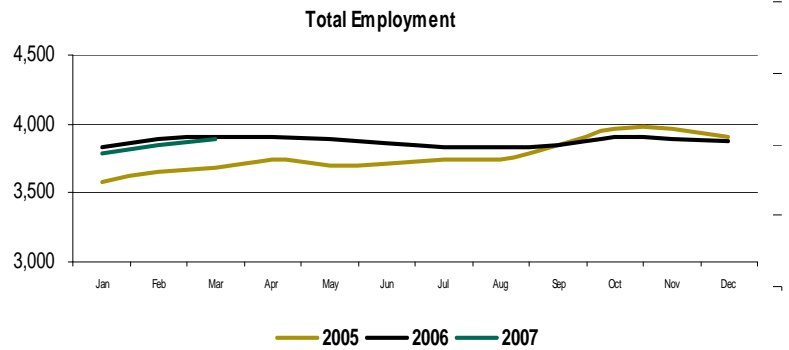
St. Helena Parish

EMPLOYMENT

ST. HELENA PARISH

	Apr 06	May 06	Jun 06	Jul 06	Aug 06	Sep 06	Oct 06	Nov 06	Dec 06	Jan 07	Feb 07	Mar 07
Labor Force	4,168	4,177	4,223	4,123	4,151	4,100	4,122	4,136	4,170	4,113	4,106	4,137
% Change vs Prior Year	1.9%	3.4%	1.3%	-1.4%	0.5%	-20.0%	-18.8%	-18.7%	-6.2%	-3.0%	-2.5%	-6.9%
Total Employment	3,909	3,892	3,859	3,829	3,835	3,845	3,900	3,891	3,883	3,790	3,841	3,891
% Change vs Prior Year	4.2%	5.0%	4.0%	2.3%	2.3%	-0.1%	-1.7%	-1.9%	-0.7%	-1.1%	-1.3%	-0.4%
Number Unemployed	259	285	364	294	316	255	222	245	287	323	265	246
% Change vs Prior Year	-23.8%	-14.9%	-21.0%	-32.6%	-16.8%	-80.0%	-79.9%	-78.2%	-46.2%	-21.0%	-17.4%	-8.9%
Unemployment Rate	6.2%	6.8%	8.6%	7.1%	7.6%	6.2%	5.4%	5.9%	6.9%	7.9%	6.5%	5.9%
Change vs Prior Year	-2.1%	-1.5%	-2.5%	-3.3%	-1.6%	-18.7%	-16.4%	-16.2%	-5.1%	-1.7%	-1.1%	-0.6%

	2Q7-06	3Q7-06	4Q7-06	1Q7-07
Labor Force	4,189	4,125	4,143	4,119
% Change vs Prior Year	2.2%	-7.9%	-14.9%	-2.2%
Total Employment	3,887	3,836	3,891	3,841
% Change vs Prior Year	4.4%	1.5%	-1.4%	-1.0%
Number Unemployed	303	288	251	278
% Change vs Prior Year	-20.1%	-58.7%	-72.7%	-16.6%
Unemployment Rate	7.2%	7.0%	6.1%	6.8%
Change vs Prior Year	-2.0%	-7.9%	-12.6%	-1.1%



Source: Labor Market Statistics, Local Area Unemployment Statistics Program

SALES AND USE TAXES

ST. HELENA PARISH

	Apr 06	May 06	Jun 06	Jul 06	Aug 06	Sep 06	Oct 06	Nov 06	Dec 06	Jan 07	Feb 07	Mar 07
Total Sales (Mil.)	\$ 6.28	\$ 5.07	\$ 4.84	\$ 5.80	\$ 4.82	\$ 4.79	\$ 5.41	\$ 4.50	\$ 4.39	\$ 6.33	\$ 2.51	\$ 5.18
% Change vs Prior Year	57.7%	42.9%	10.3%	48.3%	50.9%	38.6%	29.3%	-4.1%	17.8%	6.5%	-29.0%	19.3%
Sales Tax Collected (Mil.)	\$ 0.31	\$ 0.25	\$ 0.24	\$ 0.29	\$ 0.24	\$ 0.24	\$ 0.27	\$ 0.22	\$ 0.22	\$ 0.32	\$ 0.13	\$ 0.26
% Change vs Prior Year	57.7%	42.9%	10.3%	48.3%	50.9%	38.6%	29.3%	-4.1%	17.8%	6.5%	-29.0%	19.3%

Source: St. Helena Parish Sheriff's Office

RESIDENTIAL BUILDING PERMITS

ST. HELENA PARISH

	Apr 06	May 06	Jun 06	Jul 06	Aug 06	Sep 06	Oct 06	Nov 06	Dec 06	Jan 07	Feb 07	Mar 07
Total Units	4	3	5	7	10	4	5	6	7	1	1	-
% Change Last Year	33.3%	50.0%	0.0%	75.0%	900.0%	-33.3%	--	100.0%	600.0%	--	--	--
Value (\$000s)	307	282	410	633	1,630	439	560	809	1,095	163	163	-
% Change Last Year	-41.5%	-6.0%	-50.0%	75.8%	831.4%	-44.4%	--	241.4%	742.3%	--	--	--

Source: 2006 = St Helena Parish Police Jury; 2007 = Louisiana Department of Economic Development (estimates with imputation)



Business Research Center
1514 Martens Drive
Hammond, LA 70401

Non-Profit Org.
U.S. Postage
PAID
Bulk Rate
Permit No. 193
Hammond LA



Our Special Thanks
This edition of the *Economic Reporter* would not exist without valuable contributions from:

Southeastern Louisiana University: Dr. A.M.M. Jamal, Dr. John Cresson, Krista H. Marchinko, Rene Abadie

St. Tammany Parish Sales and Use Tax Department

Tangipahoa Parish Permit Office and School Board Sales and Use Tax Department

Livingston Parish Building Permit Office and School Board Sales and Use Tax Division

Washington Parish Building and Planning Department and Sheriff's Office Sales and Use Tax Department

St. Helena Parish Sheriff's Office

and building permit offices of the following municipalities:

**Town of Abita Springs
Village of Albany
City of Bogalusa
City of Covington
City of Denham Springs
Village of Folsom
Town of Franklinton**

**Town of Independence
Town of Livingston
Town of Madisonville
City of Mandeville
Town of Pearl River
City of Ponchatoula
City of Slidell**

This publication is jointly produced by the following Southeastern Louisiana University departments:

- Business Research Center
- Economic & Business Development Center
- Southeast Louisiana Business Center
- College of Business