

Economic Reporter

Promoting Economic Development in Southeast Louisiana

2006

Vol. 2 · No. 4

NATIONAL

- U.S. Economy

STATE

- LA Employment
- LA Stock

REGIONAL

- Employment
- Sales Tax Collection
- Building Permits
- Economy

LOCAL

- St. Tammany
- Tangipahoa
- Livingston
- Washington
- St. Helena

CONTACT US

Southeastern Louisiana University
 Business Research Ctr.
 1514 Martens Drive
 Hammond, LA 70401

Phone: (985) 549-3199
 Fax: (985) 549-2127
 wjoubert@selu.edu

NATIONAL

U.S. Economy

Dr. A. M. M. Jamal
 Professor of Management

The U. S. gross domestic product grew 5.6 percent in real terms during the first quarter of 2006 and advanced 3.2 percent during the past twelve months. Total employment for the first quarter grew 1.6 percent compared with the corresponding period of the previous year. A survey of forecasters by the *Economist*,

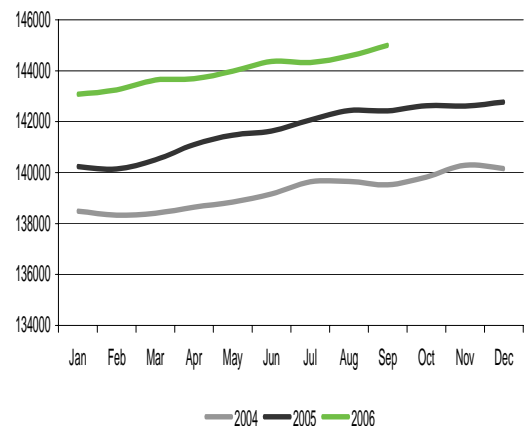
shows that the U.S. economy would grow 3.4 percent and 2.5 percent in 2006 and 2007 respectively. In addition, forecasts published by the Wachovia Bank indicate similar growth rates at 3.4 percent and 2.7 percent.

EMPLOYMENT

UNITED STATES (Numbers in Thousands)

	Oct-05	Nov-05	Dec-05	Jan-06	Feb-06	Mar-06	Apr-06	May-06	Jun-06	Jul-06	Aug-06	Sep-06
Labor Force	150,043	150,183	150,153	150,114	150,449	150,652	150,811	150,991	151,321	151,534	151,698	151,635
% Change Last Year	1.5%	1.3%	1.3%	1.4%	1.6%	1.7%	1.4%	1.3%	1.5%	1.3%	1.2%	1.0%
Total Employment	142,625	142,611	142,779	143,074	143,257	143,641	143,688	143,976	144,363	144,329	144,579	145,010
% Change Last Year	2.0%	1.7%	1.9%	2.0%	2.2%	2.2%	1.8%	1.8%	1.9%	1.6%	1.5%	1.8%
Total Nonfarm	134,055	134,360	134,468	132,328	133,196	134,116	135,030	135,865	136,407	135,141	135,281	136,078
% Change Last Year	1.4%	1.6%	1.5%	-0.2%	0.2%	0.8%	1.3%	1.9%	2.1%	1.0%	1.0%	1.5%
Unemployed	7,418	7,572	7,375	7,040	7,193	7,011	7,123	7,015	6,957	7,205	7,119	6,625
% Change Last Year	-7.5%	-5.9%	-8.4%	-9.0%	-10.0%	-8.4%	-7.0%	-8.3%	-7.1%	-3.9%	-3.7%	-13.5%
Unemployment rate	4.9%	5.0%	4.9%	4.7%	4.8%	4.7%	4.7%	4.6%	4.6%	4.8%	4.7%	4.4%
Change Last Year	-0.6%	-0.4%	-0.5%	-0.5%	-0.6%	-0.5%	-0.5%	-0.5%	-0.4%	-0.2%	-0.2%	-0.7%

	4Q-05	1Q-06	2Q-06	3Q-06
Labor Force	150,126	150,405	150,213	143,324
% Change Last Year	1.3%	1.6%	1.4%	1.2%
Total Employment	142,672	143,324	144,009	144,639
% Change Last Year	1.8%	2.2%	1.8%	1.6%
Total Nonfarm	134,294	133,213	135,767	135,500
% Change Last Year	1.5%	0.3%	1.8%	1.2%
Unemployed	7,455	7,081	7,032	6,983
% Change Last Year	-7.3%	-9.1%	-9.2%	-7.1%
Unemployment rate	4.9%	4.7%	4.6%	4.6%
Change Last Year	-0.5%	-0.5%	-0.5%	-0.4%



Source: Louisiana Department of Labor

Real Estate

John Giamalva
Instructor of Economics,
Southeastern Louisiana University

The National Association of Realtors (NAR) reports that sales of existing homes dropped 4.1 percent in July, and a further 0.5 percent in August to a seasonally adjusted annual rate of 6.30 million units. Sales were 12.6 percent below the 7.21 million-unit level of August 2005.

In July, sales of existing homes fell below the volume of sales in June, and well below the volume from one year ago. In

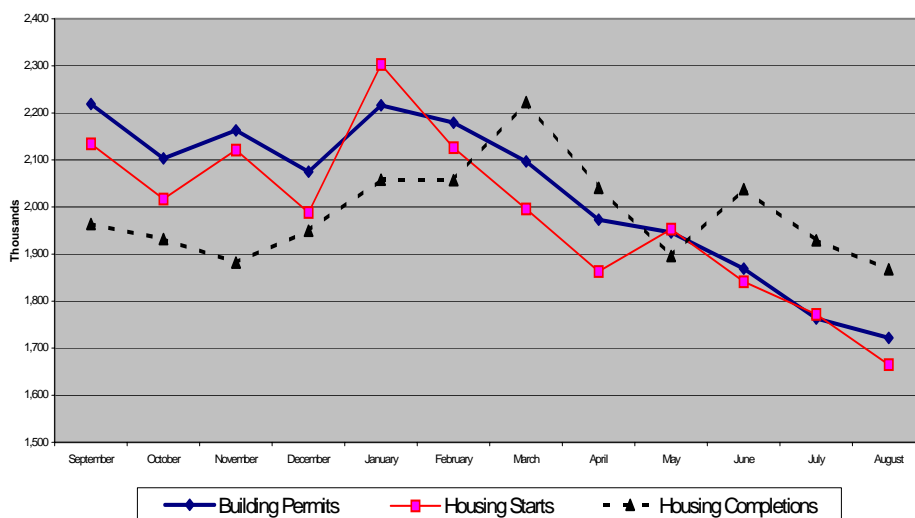
August, annually adjusted sales volume declined slightly in the South and West, but increased slightly in the Northeast and Midwest. Preliminary data indicate that sales in July and August of 2006 were down more than ten percent in the Northeast, Midwest, and

West, compared to sales in 2005. In the South as a whole, sales volume fared a little better, but sales in July were 7.0 percent lower, and sales in August were 7.4 percent lower than sales in July and August 2005. In July, the number of existing homes for sale in the U.S. market increased 3.2 percent over the previous month. In August, the inventory of existing homes on the market increased another 1.5 percent. More homes on the market and slower sales means that the 3.92 million existing homes currently on the market represent a 7.5 month supply. In contrast, in August 2005, the inventory of existing homes on the

market represented a 4.7 month supply.

In addition to sales of existing homes, building permits and construction of new residential properties have also experienced recent declines. Data reported by the U.S. Census Bureau and the U.S. Department of Housing and Urban Development indicate that the seasonally-adjusted rate of building permits for residential construction in August 2006 were 21.9 percent below the rate for August 2005. Housing completions in August 2006 were 4.4 percent below the figure for August 2005, and housing starts in August 2006 were down 19.8 percent. Results of a survey released by the NAR in June of this year indicate that high monthly payments and rising property taxes, plus increasing costs for fuel and other energy

are the leading concerns for potential U.S. homebuyers. The average monthly mortgage payment for principal and interest in 2003 was \$840. In 2005, the average was \$1,040 and in April 2006 the average monthly mortgage payment for principal and interest was \$1,132. The NAR calculates a housing affordability index as an indicator of real home prices. The index indicates whether a



typical family earning the median family income reported by the U.S. Bureau of the Census could afford to buy the median existing single-family home. (The median price is the price at which there were just as many sales below that value as above that value.) An index of 100 would mean that a family earning the median family income could just afford the median single-family home. In 2003, the index averaged 130.7. In 2005, the index averaged 114.6. In the second quarter of 2006, the affordability index fell to 105.8, meaning that a family earning the median family income in the United States could still afford the median existing single-family home, but with less left over

Real Estate

than in recent years. In July 2006, the index fell to 99.6, the first time the index has been below 100 since 1986. In August, the index increased to 102.3. Another indicator of slowing national home sales is the Pending Home Sales Index (PHSI). This index measures the level of contracts for sales of existing homes, compared to the average volume of sales contracts in 2001. Contracts for home sales typically lead actual sales by one or two months. In July of 2006, the PHSI was 105.6. This was 7.0 percent below the level in June, and 16.0 percent below the figure for July 2005. In August, the PHSI increased 4.3 percent to 110.1. Although this level is still 14.1 percent below the level of August 2005, the increase was enough to cause the NAR's chief economist to speculate that home sales may have reached a low in August. Declining sales volumes are slowing, and possibly reversing, the increase in the price of existing homes. Over the past six years, existing home prices have risen nearly ten percent per year. In just two years between 2003 and 2005, the median price for the sale of an existing home increased 22.8 percent. In contrast, the national median price of an existing home in July 2006 was just 0.9 percent above that in July 2005, and the median price in August was 1.7 percent below the price a year ago.

In contrast to the market for single-family homes, the commercial real estate market has continued to expand in 2006. Data reported by the U.S. Census Bureau and the U.S. Department of Housing and Urban Development indicates that the number of building permits issued for property with five or more residential units in August 2006 was 1.1 percent higher than in August 2005, and the number of construction starts on property with five or more residential units was 3.5 percent higher than one year ago, although the number of such construction completions in August 2006 was 11.9 percent lower than one year ago. Seasonally-adjusted nonresidential construction spending in July 2006 was 0.3 percent higher than in June, and 22.0 percent higher than July 2005. Every commercial sector for which the Census Bureau reports construction spending reported a higher level in July 2006 than July 2005.

Interest rates have increased over the past year. According to data from Freddie Mac, the national average for a new 30-year fixed-rate conventional loan reached a high of 6.76 percent in July, compared to 6.68 percent in June of this year, and 5.70 percent in July 2005. In August, the 30-year rate fell to 6.52 percent. If mortgage rates hold at this level or continue to decline, the increased inventory of existing homes along with stable prices may at least slow the decline in the volume of sales nationally.

Region	Annual adjusted sales rate	Change from July, percent	Change from 1 year ago, percent	Median price, dollars	Change from 1 year ago, percent
South	2.51 million	- 0.8	- 7.4	184,000	- 2.6
Northeast	1.07 million	+ 1.9	- 11.6	271,000	- 3.9
Midwest	1.44 million	+ 0.7	- 11.1	176,000	- 1.1
West	1.29 million	- 2.3	- 22.8	345,000	- 0.3

Economic Reporter

STATE

Gross State Product

John Giamalva

Instructor, Department of Economics

After expanding 4.5 percent in real terms in 2004, Louisiana's real gross product declined 1.6 percent in 2005, largely reflecting the impact of the 2005 hurricanes. Earlier figures had indicated a 2.2

percent growth in 2004, however revised data show that the state's real gross product expanded faster than the national average of 4.2 percent in 2004, led by increases in non-durable goods manufacturing, trade, and durable goods manufacturing. Preliminary figures for 2005 published by the U.S. Bureau of Economic Analysis indicate that Louisiana was the only state to experience a decline in real gross state product in 2005.

Louisiana Employment Situation

Dr. A. M. M. Jamal

Professor of Management

The total state employment for the second quarter of 2006 dropped 10.7 percent compared with the same months of the previous year. The unemployment rate for the most recent three months was 4.9 percent compared with 5.5 percent

for the same period last year. The unemployment rate would have been higher if the number of people actively seeking work had not dropped faster than the actual number of people employed.

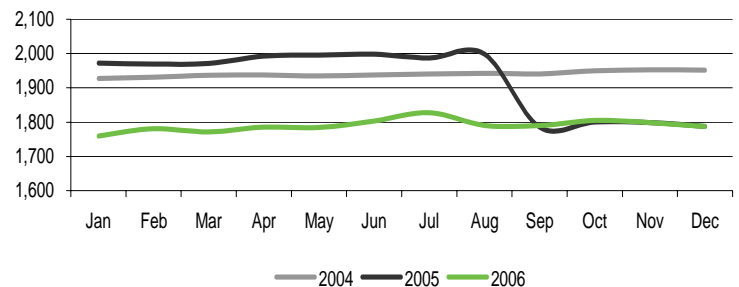
EMPLOYMENT

LOUISIANA (Numbers in Thousands)

	Oct-05	Nov-05	Dec-05	Jan-06	Feb-06	Mar-06	Apr-06	May-06	Jun-06	Jul-06	Aug-06	Sep-06
Labor Force	2,031	2,032	1,897	1,862	1,859	1,854	1,863	1,875	1,914	1,894	1,860	1,858
% Change Last Year	-1.8%	-1.9%	-8.4%	-11.0%	-11.2%	-10.9%	-11.3%	-11.2%	-11.2%	-11.7%	-12.8%	-8.2%
Total Employment	1,801	1,798	1,787	1,759	1,781	1,772	1,786	1,785	1,803	1,827	1,790	1,790
% Change Last Year	-7.7%	-7.9%	-8.4%	-10.8%	-9.5%	-10.1%	-10.4%	-10.6%	-9.8%	-8.0%	-10.4%	0.3%
Total Nonfarm	1,726	1,745	1,751	1,734	1,753	1,766	1,767	1,774	1,775	1,768	1,770	1,792
% Change Last Year	-10.1%	-9.1%	-8.7%	-10.0%	-8.9%	-8.5%	-8.6%	-8.3%	-8.2%	-7.8%	-7.8%	3.6%
Unemployed	230	234	110	103	78	82	77	90	111	67	70	68
% Change Last Year	93.5%	96.0%	-6.8%	-14.0%	-38.1%	-25.6%	-29.0%	-21.3%	-19.9%	-49.2%	-45.6%	-71.6%
Unemployment rate	11.3%	11.5%	5.8%	5.5%	4.2%	4.4%	4.1%	4.8%	5.8%	3.5%	3.8%	3.7%
Change Last Year	5.5%	5.7%	0.1%	-0.2%	-1.8%	-0.9%	-1.0%	-0.6%	-0.6%	-2.6%	-2.2%	-8.1%

	4Q-05	1Q-06	2Q-06	3Q-06
Labor Force	1,987	1,858	1,751	1,771
% Change Last Year	-4.0%	-11.0%	-11.2%	-11.0%
Total Employment	1,795	1,740	1,751	1,772
% Change Last Year	-8.0%	-10.1%	-10.3%	-6.3%
Total Nonfarm	1,740	1,795	1,771	17,911
% Change Last Year	-9.3%	-9.2%	-8.4%	-4.2%
Unemployed	191	191	874	927
% Change Last Year	61.1%	-26.1%	-13.0%	-59.0%
Unemployment rate	9.5%	9.5%	4.7%	4.9%
Change Last Year	3.8%	-1.0%	-0.7%	-4.3%

Louisiana Employment



Source: Louisiana Department of Labor

Economic Reporter

STATE

Accounting-based and market-based measures of risk and return are presented for Louisiana companies which are traded on the NYSE, AMEX, and NASDAQ. The data was obtained from Bloomberg in June of 2006. A Bloomberg terminal is housed in the Finance Lab in the College of Business at Southeastern Louisiana University. One year

total return, Return on Assets (ROA), Return on Equity (ROE), and Profit Margin (PM) are return measures, while volatility (standard deviation), beta, correlation coefficient, and Financial Leverage (measured by Average Total Assets divided by Average Total Common Equity) are used to assess risk.

Name	Closing Price	1 Yr Tot Ret	Volatility 360 Day	Price to Book	3 Yr Av Ret on Assets	3 Yr Av Ret on Eq	Fin Lev	Profit Margin	Asset Turnov	Ret on Assets	Ret on Com Eq	Beta	Corr
Amedisys Inc.	37.75	17.78	45.739	2.97	12.11	20.92	1.58	7.89	1.41	11.15	17.65	1.17	0.28
Amerisafe Inc.	11.34	na	na	1.86	na	na	31.23	2.15	0.34	0.72	na	na	na
CKX Lands Inc.	12.33	-16.48	na	2.71	18.15	18.73	1.04	56.67	0.32	18	18.65	0.97	0.17
Cleco Corp.	22	7.3	19.203	1.61	3.55	11.69	3.26	19.85	0.46	9.07	29.59	0.9	0.55
Centurytel Inc.	36.2	4.53	16.849	1.41	4.33	9.94	2.22	13.49	0.32	4.29	9.53	0.75	0.47
Energy Partners	18.12	-29.49	41.266	1.64	7.59	17.93	2.34	18.18	0.51	9.14	21.34	1.8	0.46
Entergy Corp.	70.24	-3.18	17.144	1.82	3.18	11.04	3.69	9.14	0.34	3.04	11.2	0.65	0.45
Freeport-McMor-B	49.23	41.52	39.139	12.17	8.08	na	13.19	23.81	0.79	17.57	231.73	2.26	0.59
Gulf Island Fabr.	19.32	-5.74	38.274	1.49	9.64	11.74	1.19	6.89	1.19	8.22	9.81	0.48	0.14
Global Inds. Ltd.	15.65	78.14	45.998	3.45	-0.9	-1.31	1.69	5.05	0.86	4.34	7.34	1.95	0.46
GS Financial	17.53	na	na	0.88	-0.51	-3.56	6.95	-40.08	0.05	-1.95	-13.53	na	na
H&E Equipment Se	26.95	na	na	5.05	na	na	-24.44	4.69	1.28	6	na	na	na
Hornbeck Offshore	30.65	15.01	43.111	1.87	2.94	7.56	2.05	20.51	0.29	5.96	12.23	2.02	0.47
Iberiabank Corp.	58.01	22.08	24.04	2.09	1.1	12.11	10.96	13.62	0.06	0.83	9.1	1.03	0.49
Intl. Shipholding	13.28	-10.57	17.516	0.57	1.94	5.98	3.02	2.67	0.63	1.11	3.35	-0.12	0.00
Lamar Advertising-A	53.44	25.77	19.911	3.21	0.07	0.11	2.09	4.09	0.28	1.12	2.33	0.66	0.36
LHC Group Inc.	20.4	18.26	na	3.32	na	na	1.6	6.21	2.14	13.28	21.31	na	na
McMoran Exploration	17.14	-11.51	37.435	na	-18.91	na	-5.81	-30.52	0.33	-10.44	na	1.42	0.37
Midsouth Bancorp	29.5	33.89	24.321	2.72	1.33	17.64	12.86	14.32	0.08	1.11	14.3	-0.03	0.00
Newpark Resource	5.61	-22.94	44.843	1.42	1.41	2.72	1.91	3.97	0.89	3.47	6.62	1.71	0.41
Omni Energy Svsc.	8.7	284.96	105.275	8.33	-9.03	-67.28	7.23	-9.86	0.79	-8.25	-59.64	0.48	0.00
PHI Inc-Voting	30.33	14.45	na	1.92	1.45	4.29	2.7	3.86	0.78	3	8.11	na	na
Pool Corp.	42.26	19.58	24.741	7.6	13.35	32.09	2.47	5.39	2.55	13.74	33.9	1.41	0.57
Petroquest Energy	10.43	59.48	53.333	3.07	5.61	11.31	2.49	17.77	0.36	6.46	16.11	1.32	0.26
Ruth's Chris Stk	19.35	na	na	11.09	na	na	-2.96	5.1	1.73	5.8	na	na	na
Shaw Group Inc.	24.71	17.5	46.864	1.61	0.11	0.31	2.03	0.5	1.59	0.8	1.62	2.26	0.49
Stone Energy	45.91	-7.74	38.298	1.28	8.49	17.78	2.2	21.5	0.32	6.91	15.21	1.69	0.49
Superior Energy	28.88	60.53	39.314	4.11	4.76	10.59	2.19	9.23	0.7	6.46	14.16	1.95	0.52
Stewart Enter.	5.43	-15.63	36.031	1.3	-2.36	-10.61	4.73	-28.97	0.2	-5.89	-27.9	0.99	0.36
Tidewater Inc.	44.72	21.34	36.574	1.63	5.71	8.49	1.48	26.86	0.38	10.3	15.2	1.55	0.50
Teche Holding	44.5	25.99	na	1.62	0.98	9.86	10.93	11.08	0.07	0.78	8.55	-0.01	0.00
Whitney Hldg.	35.61	13.73	21.405	2.31	1.22	11.37	9.83	18.6	0.06	1.12	10.97	1.07	0.48
LA Avg	28.30	23.52	36.53	3.17	3.05	6.59	3.69	7.61	0.69	4.60	16.03	1.17	0.36
AL Avg	28.17	7.11	34.72	2.61	1.34	9.26	6.01	-470.91	0.77	1.56	8.84	na	na
MS Avg	23.10	28.79	32.15	2.23	4.22	14.30	6.08	11.52	0.66	4.07	11.10	na	na
Gulf South Avg	27.29	17.43	34.91	2.76	2.55	9.28	5.12	-195.92	0.72	3.21	11.95	na	na
S&P 500 INDEX	1252.2	4.57	na	2.67	na	na	na	na	na	na	na	1	1

REGIONAL

North Shore Employment Situation

Dr. A. M. M. Jamal

Professor of Management

Total employment in the North Shore Region (the five Florida parishes of Tangipahoa, Washington, Livingston, St. Helena, and St. Tammany) in the second quarter of 2006 was 15.2 percent lower than the corresponding period in 2005, and 14.9 percent lower in the third quarter; largely driven by declines in employment in St. Tammany Parish.

Washington and Tangipahoa parishes also experienced smaller declines in employment. Livingston Parish saw a slight increase in employment levels, and employment in St. Helena first experienced a slight decline in the second quarter, then an increase in the third quarter; compared to the comparable quarter in 2005.

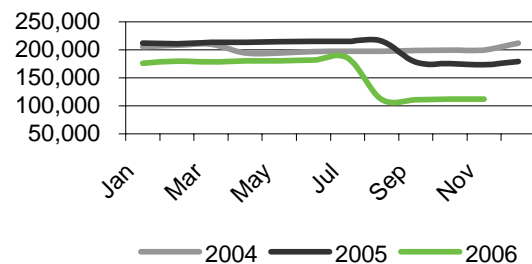
EMPLOYMENT

North Shore

	Oct-05	Nov-05	Dec-05	Jan-06	Feb-06	Mar-06	Apr-06	May-06	Jun-06	Jul-06	Aug-06	Sep-06
Labor Force	208,178	207,428	192,838	187,633	188,827	187,631	189,033	190,487	193,589	192,309	189,526	188,378
% Change Last Year	-1.0%	-1.5%	-13.4%	-16.5%	-15.1%	-15.8%	-15.0%	-15.1%	-15.4%	-15.5%	-16.9%	-12.1%
Total Employment	175,506	173,665	179,274	175,669	179,627	178,376	180,292	180,437	181,638	185,192	111,390	110,718
% Change Last Year	-11.9%	-12.8%	-15.4%	-17.1%	-14.8%	-16.3%	-15.6%	-15.8%	-15.7%	-13.8%	-48.3%	-37.7%
Unemployed	16,054	17,244	6,951	6,270	4,818	5,026	4,930	5,784	7,088	4,288	4,490	4,259
% Change Last Year	45.4%	50.1%	-35.6%	-21.1%	-32.2%	-16.8%	-14.1%	-8.6%	-18.7%	-47.6%	-42.3%	-77.2%
Unemployment rate	7.7%	8.3%	3.6%	3.3%	2.6%	2.7%	2.6%	3.0%	3.7%	2.2%	2.4%	2.3%
Change Last Year	2.5%	2.9%	-1.2%	-0.2%	-0.6%	0.0%	0.0%	0.2%	-0.2%	-1.4%	-1.0%	-6.4%

	4Q-05	1Q-06	2Q-06	3Q-06
Labor Force	202,815	188,030	191,036	190,071
% Change Last Year	-5.5%	-15.8%	-15.2%	-14.9%
Total Employment	176,148	177,891	180,789	135,767
% Change Last Year	-13.4%	-16.1%	-15.7%	-33.0%
Unemployed	13,416	5,371	5,934	4,346
% Change Last Year	20.8%	-23.6%	1.0%	-62.4%
Unemployment rate	6.5%	2.9%	3.1%	2.3%
Change Last Year	1.4%	-0.3%	0.0%	-3.0%

North Shore Employment



Source: Louisiana Department of Labor

Economic Reporter

Sales Tax Collections in North Shore Region

Sales tax collections reflect the level of business activity in a region. They represent an important aspect of the economic vigor of the North Shore parishes. Total sales tax collected in the region has increased significantly over the previous year. Total sales tax collected in the region in the second quarter was 35.9 percent higher than in the second

quarter of 2005. The improvement in economic activity was widespread. Every parish reported increased sales tax collections in the second quarter, compared to the same quarter last year; from a 25.4 percent increase in Washington Parish to a 45.0 percent increase in sales tax collections in St. Tammany Parish.

SALES TAX												
NORTHSHORE												
	Oct-05	Nov-05	Dec-05	Jan-06	Feb-06	Mar-06	Apr-06	May-06	Jun-06	Jul-06	Aug-06	Sep-06
Total Sales (Mil.)	\$651	\$645	\$641	\$704	\$617	\$679	\$685	\$679	\$703	\$634	\$617	\$651
% Change Last Year	47.9%	49.1%	27.5%	48.0%	45.5%	46.4%	36.2%	44.3%	41.7%	32.9%	69.7%	50.6%
Sales Tax Collected (Mil.)	\$29	\$29	\$28	\$31	\$28	\$30	\$30	\$31	\$31	\$28	\$27	\$29
% Change Last Year	50.0%	49.1%	23.6%	47.6%	46.9%	45.1%	35.3%	46.3%	40.7%	32.4%	77.3%	45.5%

Source: St. Tammany Parish Sheriff's Office (Sales and Use Tax Division), Tangipahoa Parish Council - School Board, St. Helena Parish Sheriff's Office, Livingston Parish Sales Tax Department, Washington Parish Sheriff's Office - Sales and Use Tax Department

Building Permits in North Shore Region

Construction projects reflect another aspect of a region's economy. The value of building permits is usually a leading indicator of construction activity during future months. The value of residential building permits in the region for the fourth quarter of 2005 grew 13.2 percent over a twelve month period, projecting a robust gain in future construction activities. There was a wide dispersion

in the value of building permits among the parishes of the region. Washington witnessed a 37.7 percent gain in the value of building permits followed by gains of 30.7 and 25 percent for Tangipahoa and Livingston respectively. On the other hand, value of building permits dropped 77.7 percent for St. Tammany followed by a drop of 67.9 percent for St. Helena.

RESIDENTIAL BUILDING PERMITS												
NORTHSHORE												
	Oct 05	Nov 05	Dec 05	Jan 06	Feb 06	Mar 06	Apr 06	May 06	Jun 06	Jul 06	Aug 06	Sep 06
Total Units	249	268	227	314	594	800	681	613	585	472	774	514
% Change Last Year	-56.7%	-24.7%	-55.6%	-53.4%	56.7%	102.5%	71.1%	43.9%	41.6%	16.8%	36.0%	69.6%
Value (\$000s)	17,141	27,210	24,824	34,716	37,854	55,454	53,138	50,526	43,683	38,013	73,652	39,548
% Change Last Year	-36.5%	21.7%	7.7%	71.2%	107.1%	175.9%	142.9%	148.8%	101.8%	85.5%	198.6%	48.7%
Unincopr. Units	198	209	187	257	516	727	606	504	489	423	594	396
% Change Last Year	-62.6%	-33.4%	-58.8%	-58.5%	50.4%	105.4%	71.7%	29.9%	28.7%	14.9%	11.0%	51.1%
Value (\$000s)	10,536	18,531	17,803	24,713	24,767	41,534	39,763	30,481	28,038	29,715	59,407	26,184
% Change Last Year	-48.1%	63.4%	21.1%	104.7%	66.8%	169.2%	149.0%	111.9%	61.9%	111.7%	238.7%	23.8%
Corp. Units	51	59	40	57	78	73	75	109	96	49	180	118
% Change Last Year	10.9%	40.5%	-29.8%	3.6%	116.7%	78.0%	66.7%	186.8%	190.9%	36.1%	429.4%	187.8%
Value (\$000s)	6,605	8,678	7,020	10,003	13,087	13,920	13,375	20,045	15,646	8,298	14,245	13,365
% Change Last Year	-1.4%	-21.3%	-16.0%	21.8%	281.5%	198.2%	126.5%	238.4%	261.4%	28.5%	99.9%	145.0%

Source: St Tammany Parish - Economic Development Information Clearing House, Tangipahoa - Building Permit Office, Washington Parish - Building Permit Office, St. Helena Parish - Building Permit Office.
*Hammond Corp. not included.

Economic Reporter

LOCAL

St. Tammany Parish

EMPLOYMENT

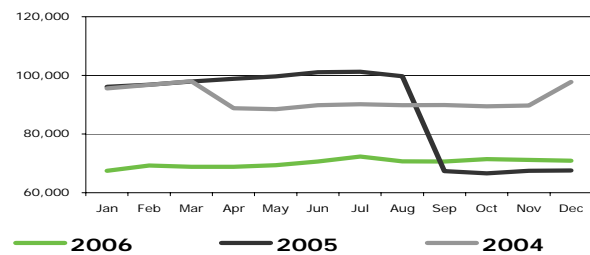
ST. TAMMANY

	Oct-05	Nov-05	Dec-05	Jan-06	Feb-06	Mar-06	Apr-06	May-06	Jun-06	Jul-06	Aug-06	Sep-06
Labor Force	83,211	83,989	74,200	73,145	73,674	73,021	72,649	73,592	75,467	75,146	73,646	73,401
% Change Last Year	-10.6%	-10.1%	-26.7%	-27.5%	-27.3%	-28.0%	-28.8%	-28.8%	-28.6%	-29.0%	-29.5%	-14.1%
Total Employment	66,593	67,470	67,587	67,451	69,292	68,792	68,838	69,326	70,604	72,317	70,707	70,671
% Change Last Year	-25.6%	-24.8%	-30.8%	-29.8%	-28.4%	-29.8%	-30.4%	-30.4%	-30.1%	-28.6%	-29.1%	4.9%
Unemployed	16,618	16,519	6,613	5,694	4,382	4,229	3,811	4,266	4,863	2,829	2,939	2,730
% Change Last Year	361.6%	346.5%	88.2%	18.9%	-2.8%	20.5%	20.5%	11.9%	6.2%	-38.1%	-37.2%	-84.9%
Unemployment rate	20.0%	19.7%	8.9%	7.8%	5.9%	5.8%	5.2%	5.8%	6.4%	3.8%	4.0%	3.7%
Change Last Year	16.2%	15.7%	5.4%	3.1%	1.5%	2.3%	2.1%	2.1%	2.1%	-0.5%	-0.5%	-17.4%

	4QOT-05	1QOT-06	2QOT-06	3QOT-06
Labor Force	80,467	73,280	73,903	74,064
% Change Last Year	-16.1%	-27.6%	-28.7%	-24.9%
Total Employment	67,217	68,512	69,589	71,232
% Change Last Year	-27.2%	-29.3%	-30.3%	-20.4%
Unemployed	13,250	4,768	4,313	2,833
% Change Last Year	267.6%	11.7%	56.8%	-68.9%
Unemployment rate	16.2%	6.5%	5.8%	3.8%
Change Last Year	12.4%	2.3%	2.1%	-6.1%

Source: Louisiana Department of Labor

Employment St. Tammany



SALES TAX

ST. TAMMANY

	Oct-05	Nov-05	Dec-05	Jan-06	Feb-06	Mar-06	Apr-06	May-06	Jun-06	Jul-06	Aug-06	Sep-06
Total Sales (Mil.)	\$ 378.30	\$ 360.10	\$ 364.61	\$ 364.61	\$ 359.66	\$ 404.62	\$ 371.66	\$ 397.76	\$ 402.44	\$ 345.92	\$ 342.07	\$ 362.33
% Change Last Year	64.0%	50.9%	18.6%	58.7%	58.5%	49.2%	34.5%	56.4%	45.1%	41.1%	117.7%	39.8%
Sales Tax Collected (Mil.)	\$ 19.86	\$ 18.91	\$ 19.14	\$ 19.14	\$ 18.88	\$ 21.24	\$ 19.51	\$ 20.88	\$ 21.13	\$ 18.16	\$ 17.96	\$ 19.02
% Change Last Year	64.0%	50.9%	18.6%	58.7%	58.5%	49.2%	34.5%	56.4%	45.1%	41.1%	117.7%	39.8%

Residential Building Permits

ST. TAMMANY

	Oct 05	Nov 05	Dec 05	Jan 06	Feb 06	Mar 06	Apr 06	May 06	Jun 06	Jul 06	Aug 06	Sep 06
Total Units	30	53	38	38	346	369	276	304	289	186	332	217
% Change Last Year	-91.0%	-75.9%	-88.8%	-92.8%	79.3%	72.4%	30.8%	16.9%	26.2%	-18.4%	-12.4%	843.5%
Value (\$000s)	5,116	8,932	7,475	7,860	59,418	64,111	49,273	56,562	54,858	33,759	42,427	37,888
% Change Last Year	-89.1%	-80.0%	-86.8%	-90.3%	80.0%	94.7%	36.0%	29.2%	42.2%	-14.0%	-30.4%	1540.9%
Unincorp. Units	24	22	21	23	295	335	236	228	235	162	204	165
% Change Last Year	-92.2%	-88.9%	-93.1%	-95.3%	64.8%	65.0%	24.2%	-5.8%	9.8%	-21.7%	-42.4%	768.4%
Value (\$000s)	3,519	3,807	3,798	4,667	49,994	56,772	40,981	43,018	47,380	29,597	35,141	30,947
% Change Last Year	-91.6%	-89.3%	-92.5%	-93.7%	60.6%	79.0%	24.4%	5.5%	29.9%	-15.4%	-35.9%	2464.0%
Incorp. Units	6	31	17	15	51	34	40	76	54	24	128	52
% Change Last Year	-76.0%	40.9%	-50.0%	-59.5%	264.3%	209.1%	90.5%	322.2%	260.0%	14.3%	412.0%	1200.0%
Value (\$000s)	1,597	5,125	3,677	3,193	9,424	7,339	8,292	13,544	7,478	4,162	7,286	6,940
% Change Last Year	-69.5%	-44.1%	-40.8%	-50.6%	401.7%	507.1%	153.5%	354.0%	255.6%	-2.1%	18.0%	529.8%

Source: Economic Development Information Clearing House

Economic Reporter

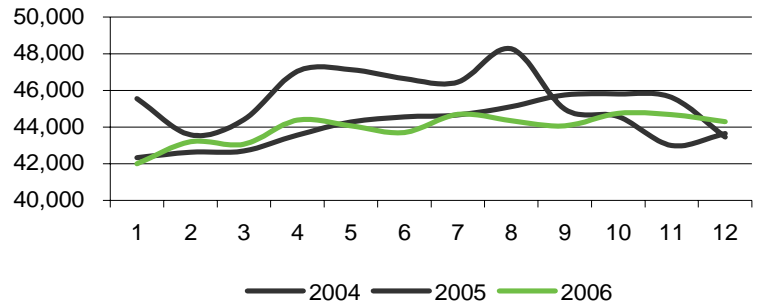
Tangipahoa Parish

EMPLOYMENT

TANGIPAHOA

	Oct-05	Nov-05	Dec-05	Jan-06	Feb-06	Mar-06	Apr-06	May-06	Jun-06	Jul-06	Aug-06	Sep-06
Labor Force	53,404	52,399	47,032	44,927	45,400	45,364	46,563	46,571	46,714	46,533	46,234	45,882
% Change Last Year	9.1%	7.1%	1.2%	-7.9%	-2.3%	-3.2%	-5.7%	-6.3%	-7.0%	-6.5%	-10.2%	-16.9%
Total Employment	44,566	42,998	43,649	41,997	43,198	43,069	44,378	44,076	43,704	44,703	44,349	44,071
% Change Last Year	-2.7%	-5.7%	0.5%	-7.8%	-0.9%	-3.0%	-5.7%	-6.5%	-6.3%	-3.8%	-8.2%	-2.0%
Unemployed	8,838	9,401	3,383	2,930	2,202	2,295	2,185	2,495	3,010	1,830	1,885	1,811
% Change Last Year	180.6%	184.0%	12.1%	-9.2%	-23.8%	-6.7%	-6.2%	-3.3%	-16.1%	-45.0%	-41.4%	-82.3%
Unemployment rate	16.5%	17.9%	7.2%	6.5%	4.9%	5.1%	4.7%	5.4%	6.4%	3.9%	4.1%	3.9%
Change Last Year	10.1%	11.1%	0.7%	-0.6%	-1.3%	-0.1%	0.0%	0.2%	-0.7%	-2.8%	-2.1%	-14.6%

	4Q-05	1Q-06	2Q-06	3Q-06
Labor Force	48,120	45,230	46,616	46,216
% Change Last Year	5.9%	0.5%	-0.2%	-1.8%
Total Employment	44,961	42,755	44,053	44,374
% Change Last Year	-2.7%	0.5%	-0.2%	-1.8%
Unemployed	3,159	2,476	2,563	1,842
% Change Last Year	128.2%	-1.1%	-2.2%	-3.2%
Unemployment rate	6.6%	5.5%	5.5%	4.0%
Change Last Year	7.3%	-1.1%	-2.2%	-3.2%



Source: Louisiana Department of Labor

SALES TAX

TANGIPAHOA

	Oct-05	Nov-05	Dec-05	Jan-06	Feb-06	Mar-06	Apr-06	May-06	Jun-06	Jul-06	Aug-06	Sep-06
Total Sales (Mil.)	\$ 140.92	\$ 144.05	\$ 143.13	\$ 176.49	\$ 129.26	\$ 144.67	\$ 155.99	\$ 139.17	\$ 153.07	\$ 153.72	\$ 135.04	\$ 142.36
% Change Last Year	42.0%	48.9%	58.1%	49.7%	39.5%	56.5%	41.2%	35.1%	50.1%	39.0%	36.6%	90.6%
Sales Tax Collected (Mil.)	\$ 2.82	\$ 2.88	\$ 2.86	\$ 3.53	\$ 2.59	\$ 2.89	\$ 3.12	\$ 2.78	\$ 3.06	\$ 3.07	\$ 2.70	\$ 2.85
% Change Last Year	42.0%	48.9%	58.1%	49.7%	39.5%	56.5%	41.2%	35.1%	50.1%	39.0%	36.6%	90.6%

Source: Tangipahoa Parish Council - School Board

Residential Building Permits

TANGIPAHOA

	Oct 05	Nov 05	Dec 05	Jan 06	Feb 06	Mar 06	Apr 06	May 06	Jun 06	Jul 06	Aug 06	Sep 06
Total Units	114	83	70	129	110	175	175	124	109	110	175	153
% Change Last Year	-26.0%	118.4%	25.0%	79.2%	59.4%	153.6%	243.1%	74.6%	58.0%	31.0%	153.6%	10.1%
Value (\$000s)	6,597	10,515	10,399	18,784	15,205	24,981	25,565	21,218	17,339	16,908	25,701	19,360
% Change Last Year	-111.5%	-63.9%	-133.1%	195.0%	253.5%	NA	-100.0%	-174.3%	329.4%	-95.8%	-430.9%	-112.4%
Unincorp. Units	75	59	56	97	88	146	149	99	81	96	133	95
% Change Last Year	-46.4%	96.7%	24.4%	61.7%	44.3%	160.7%	282.1%	86.8%	39.7%	37.1%	121.7%	-6.9%
Value (\$000s)	2,237	7,435	7,974	13,113	12,247	19,564	21,749	15,718	12,124	14,421	20,155	14,111
% Change Last Year	-82.2%	88.4%	31.6%	92.2%	120.8%	178.0%	334.7%	133.0%	52.5%	128.4%	157.8%	51.8%
Incorp. Units	39	24	14	32	22	29	26	25	28	14	42	58
% Change Last Year	178.6%	200.0%	27.3%	166.7%	175.0%	123.1%	116.7%	38.9%	154.5%	0.0%	366.7%	56.8%
Value (\$000s)	4,360	3,080	2,426	5,670	2,958	5,417	3,816	5,500	5,215	2,487	5,545	5,249
% Change Last Year	-92.8%	-10.3%	-211.1%	1314.3%	-6.2%	-49.1%	34.5%	-107.7%	-130.9%	-283.3%	-660.0%	-87.8%

Source: Tangipahoa - Building Permit Office

Economic Reporter

Livingston Parish

EMPLOYMENT

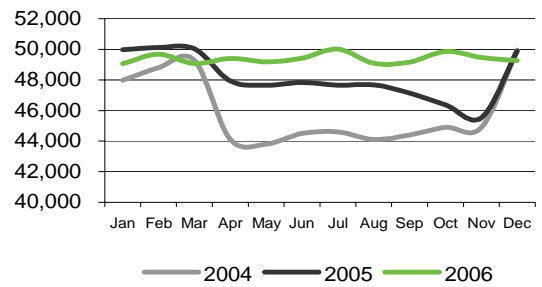
Livingston

	Oct-05	Nov-05	Dec-05	Jan-06	Feb-06	Mar-06	Apr-06	May-06	Jun-06	Jul-06	Aug-06	Sep-06
Labor Force	49,931	49,374	51,823	50,947	51,228	50,735	51,103	51,250	51,982	51,559	50,715	50,701
% Change Last Year	4.2%	2.9%	-1.8%	-3.9%	-3.0%	-3.0%	2.1%	2.5%	1.9%	1.7%	0.3%	-1.3%
Total Employment	46,364	45,528	49,874	49,063	49,681	49,061	49,409	49,181	49,426	50,016	49,082	49,168
% Change Last Year	3.3%	1.4%	-0.2%	-1.8%	-0.9%	-2.0%	3.1%	3.2%	3.3%	5.0%	2.9%	4.3%
Unemployed	3,567	3,846	1,949	1,884	1,547	1,674	1,694	2,069	2,556	1,543	1,633	1,533
% Change Last Year	18.9%	24.1%	-31.3%	-38.1%	-42.3%	-26.1%	-20.6%	-12.0%	-19.3%	-49.2%	-43.1%	-63.7%
Unemployment rate	7.1%	7.8%	3.8%	3.7%	3.0%	3.3%	3.3%	4.0%	4.9%	3.0%	3.2%	3.0%
Change Last Year	0.8%	1.3%	-1.6%	-2.0%	-2.1%	-1.0%	-1.0%	-0.7%	-1.3%	-3.0%	-2.5%	-5.2%

	4QT-05	1QT-06	2QT-06	3QT-06
Labor Force	50,376	50,970	51,445	50,992
% Change Last Year	1.6%	-3.3%	2.1%	0.2%
Total Employment	47,255	49,268	49,339	49,422
% Change Last Year	1.4%	-1.5%	3.2%	4.1%
Unemployed	3,121	1,702	2,106	1,570
% Change Last Year	4.7%	-36.1%	-19.7%	-53.6%
Unemployment rate	6.2%	3.3%	4.1%	3.1%
Change Last Year	0.2%	-1.7%	-1.0%	-3.6%

Source: Louisiana Department of Labor

Livingston Employment



SALES TAX

LIVINGSTON

	Oct-05	Nov-05	Dec-05	Jan-06	Feb-06	Mar-06	Apr-06	May-06	Jun-06	Jul-06	Aug-06	Sep-06
Total Sales (Mil.)	\$ 93.76	\$ 100.02	\$ 90.77	\$ 108.51	\$ 88.24	\$ 89.18	\$ 110.01	\$ 97.21	\$ 105.68	\$ 97.03	\$ 100.50	\$ 105.15
% Change Last Year	24.3%	40.8%	30.0%	26.2%	19.9%	30.4%	33.5%	25.4%	30.8%	16.1%	29.8%	39.6%
Sales Tax Collected (Mil.)	\$ 4.78	\$ 5.02	\$ 4.57	\$ 5.43	\$ 4.43	\$ 4.48	\$ 5.52	\$ 4.92	\$ 5.31	\$ 4.85	\$ 5.03	\$ 5.26
% Change Last Year	25.8%	40.2%	29.8%	23.9%	19.9%	29.3%	33.2%	26.4%	30.0%	15.8%	28.9%	38.7%

Source: Livingston Parish Sales Tax Department

Residential Building Permits

LIVINGSTON

	Oct 05	Nov 05	Dec 05	Jan 06	Feb 06	Mar 06	Apr 06	May 06	Jun 06	Jul 06	Aug 06	Sep 06
Total Units	94	107	106	121	108	231	189	137	144	150	226	116
% Change Last Year	40.3%	25.9%	9.3%	95.2%	14.9%	145.7%	64.3%	65.1%	48.5%	87.5%	98.2%	-12.8%
Value (\$000s)	7,834	9,210	9,111	9,460	9,870	19,947	15,623	11,237	13,863	14,307	35,512	9,447
% Change Last Year	1894.0%	-48.5%	-106.6%	-139.2%	-120.8%	NA	-181.4%	-1.1%	-69.7%	-123.8%	19.2%	-392.0%
Unincorp. Units	88	104	99	117	107	224	183	133	133	141	219	113
% Change Last Year	31.3%	36.8%	5.3%	95.0%	18.9%	173.2%	71.0%	64.2%	46.2%	76.3%	92.1%	-15.0%
Value (\$000s)	7,186	8,887	8,410	9,077	9,710	19,083	14,858	10,547	12,153	12,883	34,394	9,036
% Change Last Year	22.2%	43.6%	8.8%	86.9%	31.9%	161.5%	60.4%	61.4%	57.5%	90.9%	277.2%	-16.9%
Incorp. Units	6	3	7	4	1	7	6	4	11	9	7	3
% Change Last Year	NA	-66.7%	133.3%	100.0%	-75.0%	-41.7%	-25.0%	100.0%	83.3%	NA	NA	NA
Value (\$000s)	648	323	701	383	160	864	765	690	1,710	1,424	1,118	411
% Change Last Year	NA	-41.3%	20.9%	211.4%	-48.7%	-42.8%	-21.6%	220.9%	251.6%	NA	NA	NA

Source: Livingston Parish - Building Permit Office

Economic Reporter

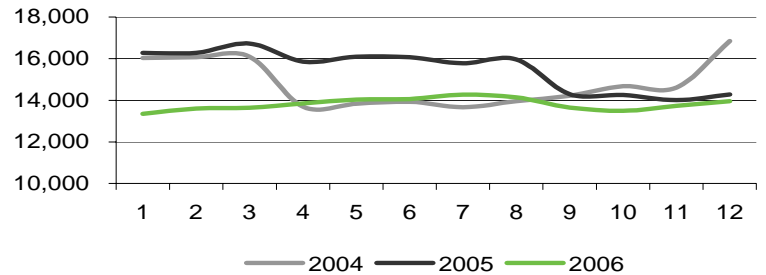
Washington Parish

EMPLOYMENT

Washington

	Oct-05	Nov-05	Dec-05	Jan-06	Feb-06	Mar-06	Apr-06	May-06	Jun-06	Jul-06	Aug-06	Sep-06
Labor Force	16,899	16,920	15,403	14,386	14,350	14,416	14,611	14,908	15,170	14,933	14,843	14,355
% Change Last Year	7.2%	7.4%	-14.4%	-18.0%	-17.7%	-18.8%	-12.9%	-13.0%	-13.4%	-12.6%	-13.7%	-17.1%
Total Employment	14,251	14,004	14,287	13,344	13,594	13,640	13,853	14,031	14,062	14,268	14,143	13,657
% Change Last Year	-2.9%	-4.1%	-15.2%	-18.1%	-16.5%	-18.5%	-12.7%	-12.8%	-12.5%	-9.6%	-11.4%	-4.5%
Unemployed	2,648	2,916	1,116	1,042	756	776	758	877	1,108	665	700	698
% Change Last Year	145.2%	153.6%	-3.3%	-17.6%	-34.9%	-24.0%	-17.5%	-15.6%	-23.7%	-49.3%	-43.4%	-76.9%
Unemployment rate	15.7%	17.2%	7.2%	7.2%	5.3%	5.4%	5.2%	5.9%	7.3%	4.5%	4.7%	4.9%
Change Last Year	8.9%	9.9%	0.8%	0.0%	-1.4%	-0.4%	-0.3%	-0.2%	-1.0%	-3.2%	-2.5%	-12.6%

	4QOT-05	1QOT-06	2QOT-06	3QOT-06
Labor Force	16,407	14,384	14,896	14,710
% Change Last Year	-0.6%	-18.2%	-13.1%	-14.5%
Total Employment	14,181	13,526	13,982	14,023
% Change Last Year	-7.8%	-17.7%	-12.6%	-8.6%
Unemployed	2,227	858	914	688
% Change Last Year	97.4%	-25.3%	-7.5%	-63.0%
Unemployment rate	13.4%	6.0%	6.1%	4.7%
Change Last Year	6.5%	-0.6%	-0.5%	-6.1%



Source: Louisiana Department of Labor

SALES TAX

WASHINGTON

	Oct-05	Nov-05	Dec-05	Jan-06	Feb-06	Mar-06	Apr-06	May-06	Jun-06	Jul-06	Aug-06	Sep-06
Total Sales (Mil.)	\$ 33.03	\$ 35.22	\$ 37.53	\$ 46.56	\$ 35.09	\$ 35.13	\$ 39.62	\$ 38.76	\$ 35.33	\$ 30.35	\$ 33.03	\$ 35.22
% Change Last Year	13.1%	55.1%	23.6%	28.6%	29.2%	25.6%	37.7%	23.1%	16.2%	-7.6%	27.1%	88.9%
Sales Tax Collected (Mil.)	\$ 1.52	\$ 1.62	\$ 1.73	\$ 2.14	\$ 1.61	\$ 1.62	\$ 1.82	\$ 1.78	\$ 1.62	\$ 1.40	\$ 1.52	\$ 1.62
% Change Last Year	13.1%	55.1%	23.6%	28.6%	29.2%	25.6%	37.7%	23.1%	16.2%	-7.6%	27.1%	88.9%

Source: Washington Parish Sheriff's Office - Sales and Use Tax Department

Residential Building Permits

WASHINGTON

	Oct 05	Nov 05	Dec 05	Jan 06	Feb 06	Mar 06	Apr 06	May 06	Jun 06	Jul 06	Aug 06	Sep 06
Total Units	11	22	12	26	30	25	37	45	38	19	31	24
% Change Last Year	-42.1%	100.0%	-29.4%	160.0%	36.4%	56.3%	105.6%	350.0%	192.3%	137.5%	416.7%	1100.0%
Value (\$000s)	1,113	2,122	1,507	3,280	3,356	3,187	3,351	4,246	4,594	2,003	3,524	3,362
% Change Last Year	-34.5%	148.2%	69.2%	643.7%	66.2%	208.4%	166.2%	426.1%	405.6%	202.6%	726.3%	1659.9%
Unincorp. Units	11	21	10	20	26	22	34	41	35	17	28	19
% Change Last Year	-8.3%	162.5%	25.0%	233.3%	116.7%	100.0%	142.9%	310.0%	191.7%	142.9%	366.7%	850.0%
Value (\$000s)	1,113	1,972	1,290	2,523	2,811	2,887	2,849	3,935	3,351	1,778	3,228	2,598
% Change Last Year	-28.6%	180.4%	123.8%	543.6%	50.4%	276.4%	141.3%	387.6%	302.5%	190.5%	656.9%	1259.9%
Incorp. Units	0	1	2	6	4	3	3	4	3	2	3	5
% Change Last Year	-100.0%	-66.7%	-77.8%	50.0%	-60.0%	-40.0%	-25.0%	NA	200.0%	100.0%	NA	NA
Value (\$000s)	0	150	216.5	757	545	300	501.69	311	1243	225	296	764
% Change Last Year	-100.0%	-1.1%	-31.0%	1444.9%	264.1%	12.7%	545.7%	NA	1535.5%	350.0%	NA	NA

Source: Washington Parish - Building Permit Office

Economic Reporter

St. Helena Parish

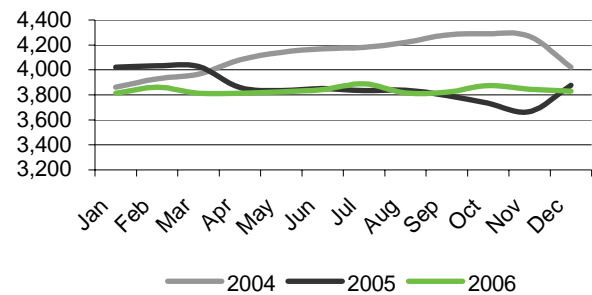
EMPLOYMENT

St. Helena

	Oct-05	Nov-05	Dec-05	Jan-06	Feb-06	Mar-06	Apr-06	May-06	Jun-06	Jul-06	Aug-06	Sep-06
Labor Force	4,733	4,746	4,380	4,228	4,175	4,095	4,107	4,166	4,256	4,138	4,088	4,039
% Change Last Year	5.2%	5.5%	2.0%	-4.6%	-5.3%	-5.3%	-2.5%	-0.7%	-2.5%	-4.6%	-4.8%	-18.7%
Total Employment	3,732	3,665	3,877	3,814	3,862	3,814	3,814	3,823	3,842	3,888	3,816	3,822
% Change Last Year	-13.0%	-14.2%	-3.6%	-5.2%	-4.2%	-5.3%	-1.2%	-0.3%	-0.2%	1.4%	-0.5%	0.7%
Unemployed	1,001	1,081	503	414	313	281	293	343	414	250	272	217
% Change Last Year	376.7%	370.0%	84.9%	1.0%	-16.8%	-4.7%	-17.2%	-4.2%	-19.1%	-50.0%	-40.5%	-81.5%
Unemployment rate	21.1%	22.8%	11.5%	9.8%	7.5%	6.9%	7.1%	8.2%	9.7%	6.0%	6.7%	5.4%
Change Last Year	16.5%	17.6%	5.2%	0.6%	-1.0%	0.1%	-1.3%	-0.3%	-2.0%	-5.5%	-3.9%	-18.3%

	4QT-05	1QT-06	2QT-06	3QT-06
Labor Force	4,620	4,166	4,176	4,088
% Change Last Year	4.3%	-5.1%	-1.9%	-9.8%
Total Employment	3,758	3,830	3,826	3,842
% Change Last Year	-10.4%	-4.9%	-0.6%	0.5%
Unemployed	862	336	350	246
% Change Last Year	263.1%	-6.8%	-12.6%	-65.4%
Unemployment rate	18.5%	8.1%	8.3%	6.0%
Change Last Year	13.1%	-0.1%	-1.2%	-9.2%

St Helena Employment



Source: Louisiana Department of Labor

SALES TAX

ST. HELENA

	Oct-05	Nov-05	Dec-05	Jan-06	Feb-06	Mar-06	Apr-06	May-06	Jun-06	Jul-06	Aug-06	Sep-06
Total Sales (Mil.)	\$ 5.24	\$ 5.86	\$ 4.66	\$ 7.44	\$ 4.42	\$ 5.43	\$ 7.85	\$ 6.34	\$ 6.05	\$ 7.25	\$ 6.02	\$ 5.98
% Change Last Year	0.0%	0.0%	0.0%	0.0%	0.0%	0.0%	0.0%	0.0%	0.0%	0.0%	0.0%	0.0%
Sales Tax Collected (Mil.)	\$ 0.21	\$ 0.23	\$ 0.19	\$ 0.30	\$ 0.18	\$ 0.22	\$ 0.31	\$ 0.25	\$ 0.24	\$ 0.29	\$ 0.24	\$ 0.24
% Change Last Year	-7.0%	66.2%	2.5%	35.5%	23.4%	45.8%	57.7%	42.9%	10.3%	48.3%	50.9%	38.6%

Source: St. Helena Parish Sheriff's Office

Residential Building Permits

ST. HELENA

	Oct 05	Nov 05	Dec 05	Jan 06	Feb 06	Mar 06	Apr 06	May 06	Jun 06	Jul 06	Aug 06	Sep 06
Total Units	-	3	1	-	-	-	4	3	5	7	10	4
% Change Last Year	-100.0%	50.0%	-50.0%	NA	-100.0%	-100.0%	33.3%	50.0%	0.0%	75.0%	900.0%	-33.3%
Value (\$000s)	-	237	130	-	-	-	307	282	410	633	1,630	439
% Change Last Year	-100.0%	-52.6%	-61.8%	NA	-100.0%	-100.0%	-41.5%	-6.0%	-50.0%	75.8%	831.4%	-44.4%

Source: St Helena Parish - Building Permit Office



Business Research Center
1514 Martens Drive
Hammond, LA 70401

Non-Profit Org.
U.S. Postage
PAID
Bulk Rate
Permit No. 193
Hammond LA



This publication is jointly produced by Southeastern Louisiana University Departments of:

- Business Research Center
- Economic & Business Development Center
- Southeast Louisiana Business Center
- College of Business

Editors:

William Joubert
John N. Giamalva

Administrative Assistant:

Farrah Laciura

Graphic Designer:

Jennifer Henry

Graduate Assistant:

Cliff Lloyd

Our Special Thanks

This Edition of the *Economic Reporter* would not exist without the valuable contribution of:

Southeastern Louisiana University: Dr. A. M. M. Jamal, Office of Public Information

St. Tammany Building Permit and Sales Tax Collection Offices

St. Tammany Economic Development Foundation

Tangipahoa Building Permit Office and School Board

Tangipahoa Economic Development Foundation

Livingston Building Permit and Sales Tax Collection Offices

Livingston Economic Development Council

Washington Building Permit and Sales Tax Collection Offices

Washington Economic Development Foundation

St. Helena Building Permit and Sales Tax Offices