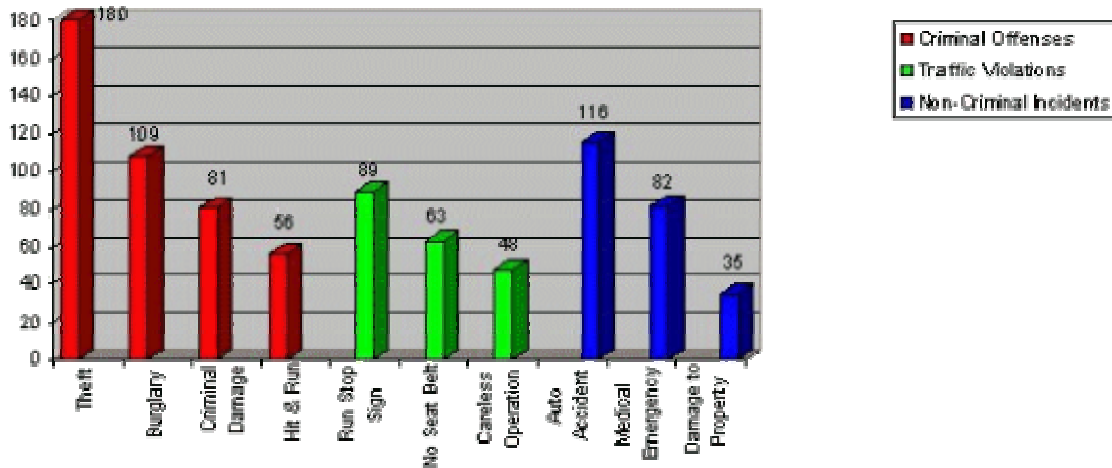


Crime on Campus: How Safe is SLU?

What are the most frequent types of incidents reported to campus police?



TOP TEN POLICE REPORT CATEGORIES (INITIATED BY SOUTHEASTERN LOUISIANA UNIVERSITY POLICE REPORTS ON CAMPUS), CALENDAR YEAR 1996

- During the 1996 calendar year, a total of 1294 SLU Campus Police reports were filed for criminal offenses, traffic violations, or noncriminal incidents. Criminal offenses are any violations of Louisiana criminal law, public health and safety laws, or City of Hammond ordinances and include offenses such as burglary, theft, disturbing the peace, and illegal alcohol and drug possession. Traffic violations are defined by Louisiana traffic statutes, including careless operation of a vehicle, running a stop sign, and speeding. Noncriminal incidents involve situations when police may be called upon but no violation of state law has occurred such as medical emergencies and reports of lost or missing property. The ten types of incidents reported above comprise 66% of the police reports filed in 1996.
- Theft, burglary, criminal damage to property, and hit and run incidents were the most frequent types of criminal offenses reported by University Police. While theft incidents decreased 18% in 1996 compared to 1995, burglary increased from 33 incidents to 109 incidents. The increase was due primarily to the stealing of parking hang tags from unlocked vehicles. Such incidents are classified as burglary since hang tags are considered University property. Most hit and run reports involved vehicles in parking lots.
- Running stop signs, not wearing seat belt, and careless operation of a vehicle were the three most frequent traffic violations. The seat belt law became effective in 1996, requiring strict enforcement by University Police.
- Noncriminal incidents reported most frequently included auto accidents, medical emergencies, and reported damage to property. Twenty-eight more auto accidents were reported in 1996, compared to 1995.

How does SLU compare to other universities like it in the United States?

	At SLU	Similar Universities indicating YES
Did your university report any violent crimes?	Yes	94%
Did your university report any property crimes?	Yes	100%
Does your university police department compile an annual report?	Yes	100%
Does your university have foot or bicycle patrols?	Yes	95%
Does your university offer night escorts?	Yes	94%
Does your university have an emergency phone system?	Yes	87%
Does your university police department publish safety reminders?	Yes	93%
Does your university police department offer crime presentations to campus groups?	Yes	96%
Does your university offer victim assistance programs?	Yes	72%

Peer Report for Campus Crime and Security at Postsecondary Institutions, For Four-Year Public Universities, 7,500-14,999 Students.
(Based on Data for the 1994 Calander Year as reported by the Office of Educational Research and Improvement, US Department of Education, January 1997)

- Unfortunately, campus crime is prevalent at the majority of universities in the United States. Violent crimes and property crimes are more common at universities like SLU -- large, public institutions with campus housing; many students, employees, and visitors; and many vehicles. Ninety-four percent of comparable universities reported one or more violent crimes on their campuses during 1994. 100% of comparable campuses reported property crimes.
- According to statistics collected by the U. S. Department of Education, Southeastern Louisiana University compares favorably to its peers in terms of crime prevention activities. While many universities report that they compile annual safety reports, have foot/bicycle patrols, offer night escorts, and have crime prevention programs, fewer report emergency phone systems or victim assistance programs.
- More information about crime prevention and Southeastern's University Police department can be found at <http://www.selu.edu/police/>.

This Policy Brief presents issues addressed in Goal 1 of the University's Strategic Plan: *To provide a diverse and exciting collegiate atmosphere, conducive to the enhancement of knowledge.* For more information about Southeastern Louisiana University, check the web site of the Office of Institutional Research & Assessment at <http://www.selu.edu/Administration/Inst-Research/>.