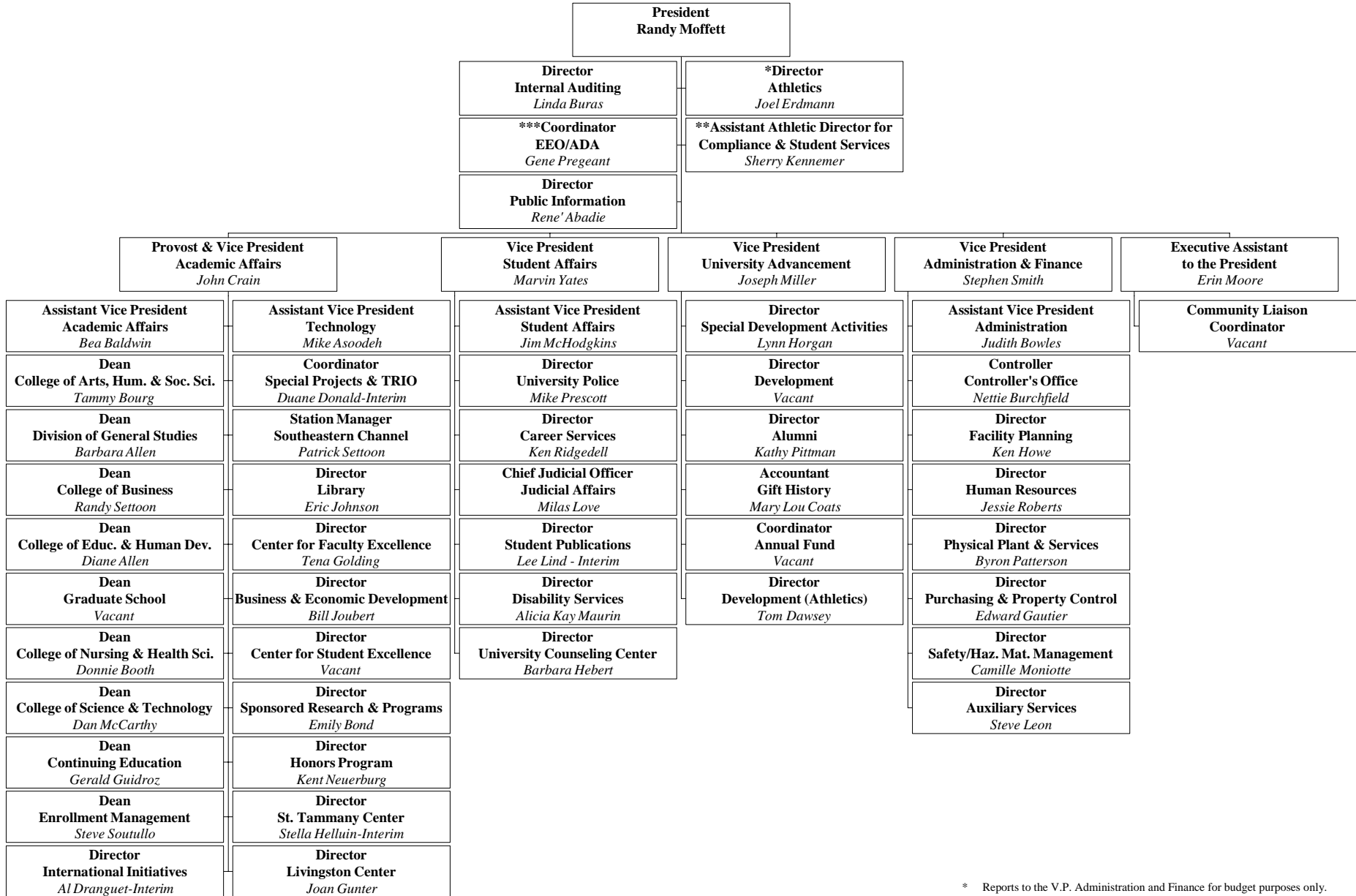


Southeastern Louisiana University

July 2007



* Reports to the V.P. Administration and Finance for budget purposes only.
 ** Reports indirectly to the Director of Athletics and Dean of Enrollment Mgmt.
 *** Reports to the Provost/V.P. for Academic Affairs for academic issues.

PROVOST AND VP FOR ACADEMIC AFFAIRS (JOHN CRAIN)

Asst. VP Academic Affairs (Bea Baldwin)

Director, Institutional Research (Michelle Hall)

Asst. VP Technology (Mike Asoodeh)

Director, Administrative Computing Services (David Koch)

Director, Basic Computing Services (Donna Methvien)

Dean, College of Arts, Humanities and Social Sciences (Tammy Bourg)

Assistant Dean (Bryan DePoy)

Department Head, Communication (Karen Fontenot)

Manager, KSLU Radio (Todd Delaney)

Department Head, English (David Hanson)

Department Head, Foreign Languages & Lit. (Lucia Harrison)

Department Head, History & Political Science (William Robison)

Department Head, Music & Dramatic Arts (David Evenson)

Department Head, Psychology (Matt Rossano)

Department Head, Sociology & Criminal Justice (Ken Bolton)

Department Head, Visual Arts (Dennis Sipiorski)

Director, Center for Southeast Louisiana Studies (Sam Hyde)

Director, Columbia Theatre/Fanfare (Donna Gay Anderson)

Dean, Division of General Studies (Barbara Allen)

General Studies Advising and Instruction (Barbara Allen)

Dean, College of Business (Randy Settoon)

Assistant Dean (Josie Walker)

Department Head, Accounting (Rick Simpson)

Department Head, General Business (Toni Phillips-Interim)

Department Head, Management (Rusty Juban)

Department Head, Marketing & Finance (Robert Cope-Interim)

Director, MBA Program (Vacant)

Director, EMBA Program (David Wyld)

Dean, College of Education and Human Development (Diane Allen)

Assistant Dean (Bill Neal)

Director, Office of Student Teaching (Rebecca Day)

Department Head, Educ. Leadership & Technology (Fred Dembowski)

Department Head, Counseling & Human Development (Mary Ballard-Interim)

Department Head, Teaching and Learning (Shirley Jacob)

Director, Center for Educational Services and Research (Ann Nauman)

Director, Laboratory School (Fawn Ukpolo)

Dean, College of Nursing and Health Sciences (Donnie Booth)

Director, School of Nursing (Barbara Moffett)

Coordinator, Graduate Program (Ann Carruth)

Department Head, Comm. Sciences & Disorders (Paula Currie)

Department Head, Kinesiology & Health Studies (Edward Hebert)

Director/Instructor, Health Center (Vera Williams)

Dean, College of Science and Technology (Dan McCarthy)

Assistant Dean (Brian Crother)

Department Head, Biological Sciences (David Sever)

Department Head, Chemistry & Physics (Gerard Blanchard)

Department Head, Computer Sci. & Industrial Tech. (Cris Koutsougeras)

Department Head, Mathematics (Timothy Hudson)

Manager, Turtle Cove Research Station (Robert Moreau)

Dean, Continuing Education (Gerald Guidroz)

Assistant Dean (Vacant)

Dean, Enrollment Management (Steve Soutullo)

Director, New Student Enrollment & Student Aid (Sam Domiano)

Director, Admissions (Vacant)

Director, Financial Aid (Rosie Toney)

Director, Records & Registration (Paulette Poche)

Director, Testing (Sarah Schillage)

Director, International Services (Josie Mercante)

VICE PRESIDENT FOR STUDENT AFFAIRS (MARVIN YATES)

Assistant Vice President for Student Affairs (Jim McHodgkins)

Director, Recreational Sports and Wellness (Dollie Hebert Crouch)

Director, Leadership Development (Jackie Dale Thomas)

Coordinator, Campus Activities Board (Jason Leader)

Director, Multicultural/International Stu Srvs & Jud. Officer (Eric Summers)

Director, Student Organizations (Melissa Miller Thomas)

Coordinator, SGA (Kas Williams)

President, SGA (Christopher Barcelona)

VICE PRESIDENT FOR ADMINISTRATION & FINANCE (STEPHEN SMITH)

Assistant Vice President, Administration (Judith Bowles)

Assistant Director, Budgets (Hans Oberschmidt)

Director, University Center (Duane Shafer)

Director, Auxiliary Services (Steve Leon)

Associate Director, Auxiliary Services (Connie Davis)

Director, Card Operations & ID Services (Carla Dawsey)

Postal Coordinator, Post Office (Vacant)

Manager, Textbook Rentals (Judy Easley)

Coordinator, Marketing & Promotions (Robin Parker)

Director, University Housing (Vacant)

Director, Contracts & Financial Planning (Kathy Sue Edwards)

Manager, Copy Services (Bernadine Nelson)

Director, Campus Dining (Martin Balisteri)

Manager, Retail Bookstore (Becky Clements)